

Grundy County, Iowa
 Horizontal Datum: **NAD 83(NA2011)** - Vertical Datum: **NAVD 1988**
 Iowa State Plane North Zone (1401)
 Iowa Regional Coordinate System, Zone 5, Waterloo LCC
 US Survey Feet
09/30/18

Point Name: **7030**

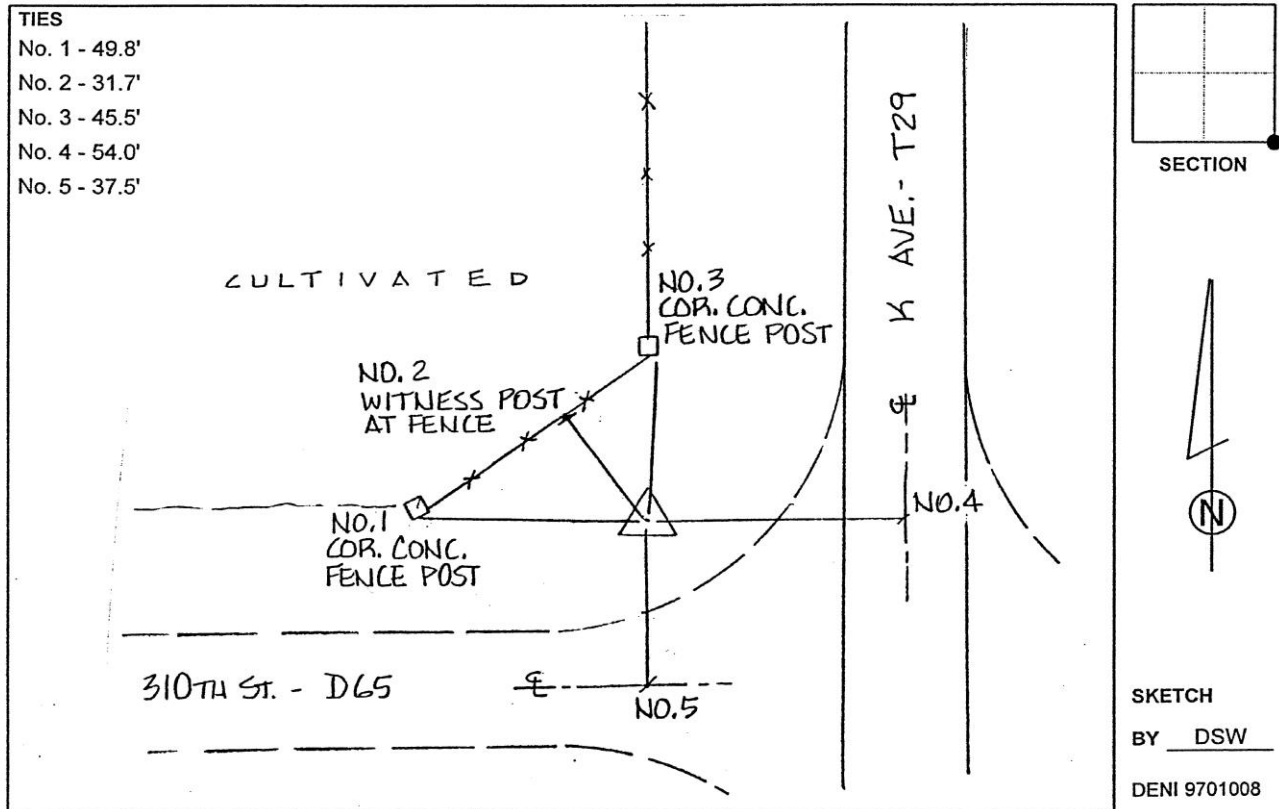
Designation: Grundy Co 7030 (Set by Deni Associates in 1997)

NAD 83(NA2011) Latitude: **N42°15'12.99257"** Longitude: **W92°49'35.45759"**
 NAVD 88 Ortho Height: **1060.430sft** Ellip. Ht: **955.854sft** Geoid**12B**

Iowa North Zone (1401) Northing: **3556191.482sft** Easting: **5103580.255sft**
 Mapping Angle: **0°27'23"** Combination Scale Factor: **0.9999256334**

IaRCS Zone 5 Northing: **8756064.884sft** Easting: **15343907.969sft**
 Mapping Angle: **-0°23'26"** Combination Scale Factor: **1.0000101007**

Monument Type: 3-1/4" aluminum disk set in the top of a 12" dia. poured-in-place concrete monument.



This document was prepared by Dan Corbin, Inc. on March 11th, 2019 for Grundy County, Iowa.