

**Grundy County, Iowa**  
Horizontal Datum: **NAD 83(NA2011)** - Vertical Datum: **NAVD 1988**  
Iowa State Plane North Zone (1401)  
Iowa Regional Coordinate System, Zone 5, Waterloo LCC  
US Survey Feet  
**09/30/18**

Point Name: **7031**

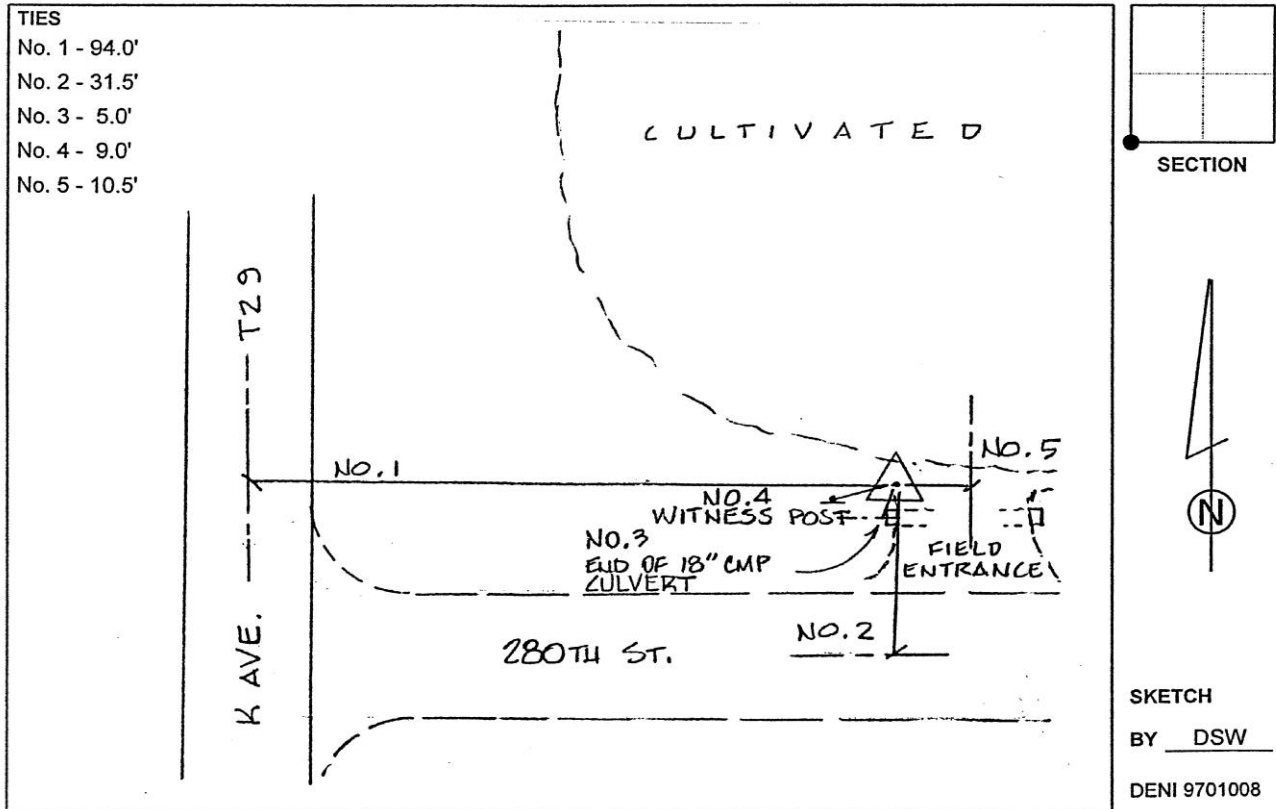
**Designation:** Grundy Co 7031 (Set by Deni Associates in 1997)

NAD 83(NA2011) Latitude: **N42°17'47.73330"** Longitude: **W92°49'33.06590"**  
NAVD 88 Ortho Height: **1076.065sft** Ellip. Ht: **971.435sft** **Geoid12B**

**Iowa North Zone (1401)** Northing: **3571856.438sft** Easting: **5103635.201sft**  
Mapping Angle: **0°27'25"** Combination Scale Factor: **0.9999197844**

**IaRCS Zone 5** Northing: **8771728.641sft** Easting: **15344194.512sft**  
Mapping Angle: **-0°23'25"** Combination Scale Factor: **1.0000044799**

**Monument Type:** 3-1/4" aluminum disk set in the top of a 12" dia. poured-in-place concrete monument.



*This document was prepared by Dan Corbin, Inc. on March 11<sup>th</sup>, 2019 for Grundy County, Iowa.*