

**Grundy County, Iowa**

Horizontal Datum: **NAD 83(NA2011)** - Vertical Datum: **NAVD 1988**

Iowa State Plane North Zone (1401)

Iowa Regional Coordinate System, Zone 5, Waterloo LCC

US Survey Feet

**09/30/18**

Point Name: **7032**

**Designation:** Grundy Co 7032 (Set by Deni Associates in 1997)

NAD 83(NA2011) Latitude: **N42°20'23.91369"** Longitude: **W92°49'55.56611"**

NAVD 88 Ortho Height: **1077.460sft** Ellip. Ht: **972.783sft** **Geoid12B**

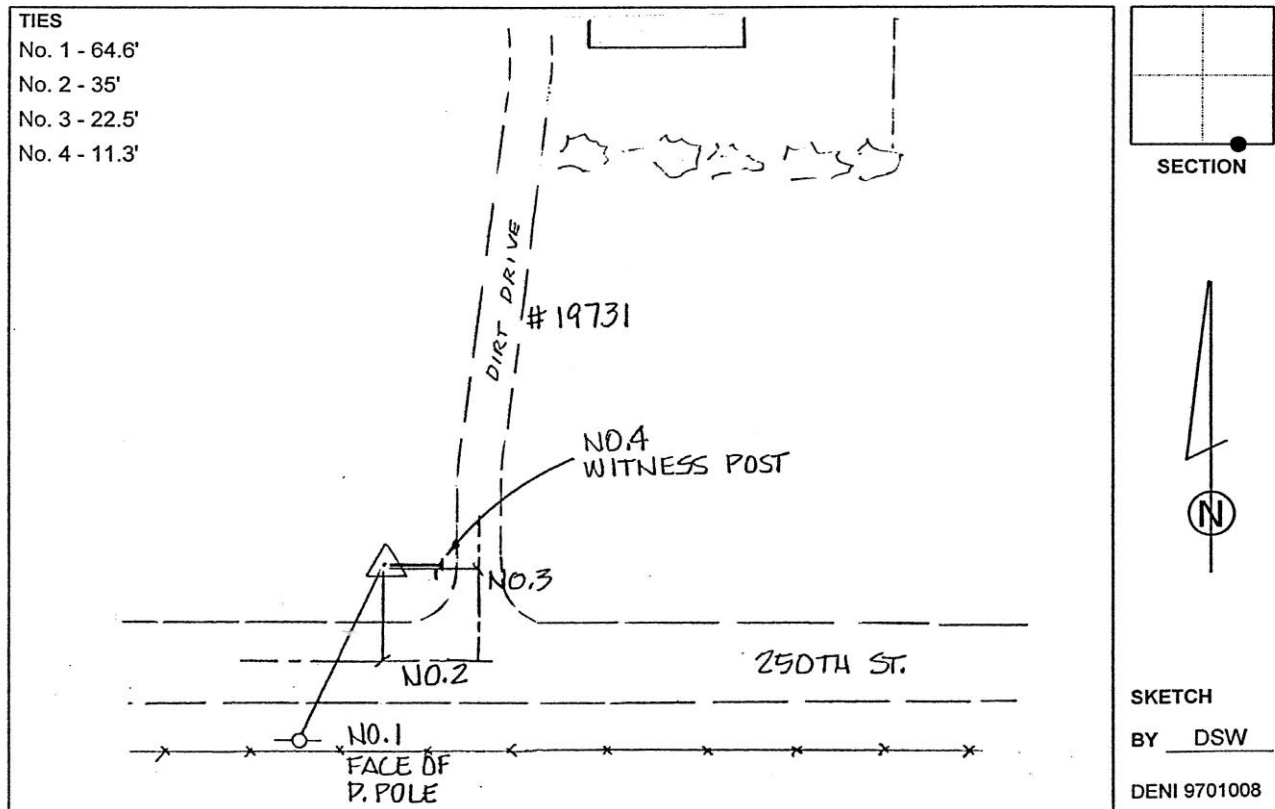
**Iowa North Zone (1401)** Northing: **3587652.319sft** Easting: **5101819.431sft**

Mapping Angle: **0°27'10"** Combination Scale Factor: **0.9999151334**

**IaRCS Zone 5** Northing: **8787550.981sft** Easting: **15342612.321sft**

Mapping Angle: **-0°23'40"** Combination Scale Factor: **1.0000000597**

**Monument Type:** 3-1/4" aluminum disk set in the top of a 12" dia. poured-in-place concrete monument.



*This document was prepared by Dan Corbin, Inc. on March 11<sup>th</sup>, 2019 for Grundy County, Iowa.*