

**Grundy County, Iowa**  
 Horizontal Datum: **NAD 83(NA2011)** - Vertical Datum: **NAVD 1988**  
 Iowa State Plane North Zone (1401)  
 Iowa Regional Coordinate System, Zone 5, Waterloo LCC  
 US Survey Feet  
**09/30/18**

Point Name: **7034**

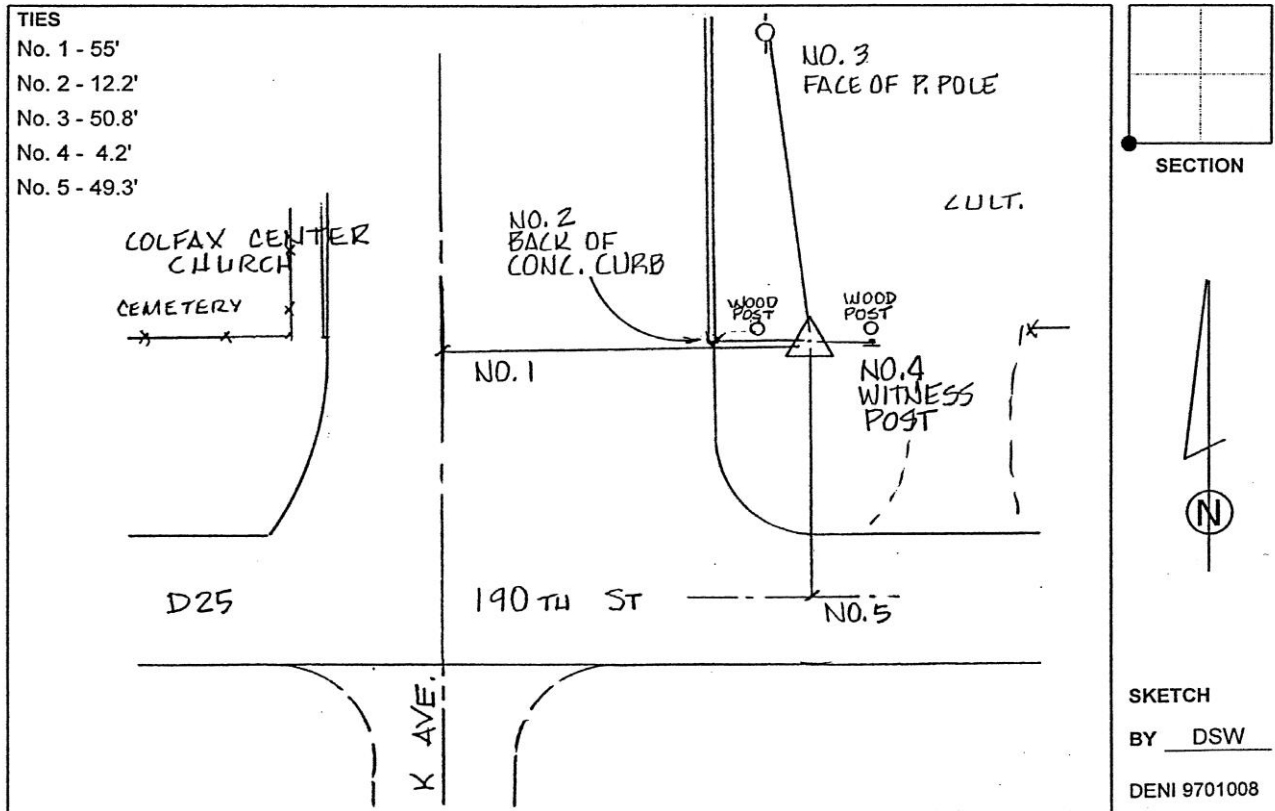
**Designation:** Grundy Co 7034 (Set by Deni Associates in 1997)

NAD 83(NA2011) Latitude: **N42°25'37.77899"** Longitude: **W92°49'36.58560"**  
 NAVD 88 Ortho Height: **1083.203sft** Ellip. Ht: **978.486sft** Geoid**12B**

**Iowa North Zone (1401)** Northing: **3619434.677sft** Easting: **5102991.816sft**  
 Mapping Angle: **0°27'22"** Combination Scale Factor: **0.9999073622**

**IaRCS Zone 5** Northing: **8819315.238sft** Easting: **15344254.565sft**  
 Mapping Angle: **-0°23'27"** Combination Scale Factor: **0.9999927527**

**Monument Type:** 3-1/4" aluminum disk set in the top of a 12" dia. poured-in-place concrete monument.



*This document was prepared by Dan Corbin, Inc. on March 11<sup>th</sup>, 2019 for Grundy County, Iowa.*