

Grundy County, Iowa
 Horizontal Datum: **NAD 83(NA2011)** - Vertical Datum: **NAVD 1988**
 Iowa State Plane North Zone (1401)
 Iowa Regional Coordinate System, Zone 5, Waterloo LCC
 US Survey Feet
09/30/18

Point Name: **7035**

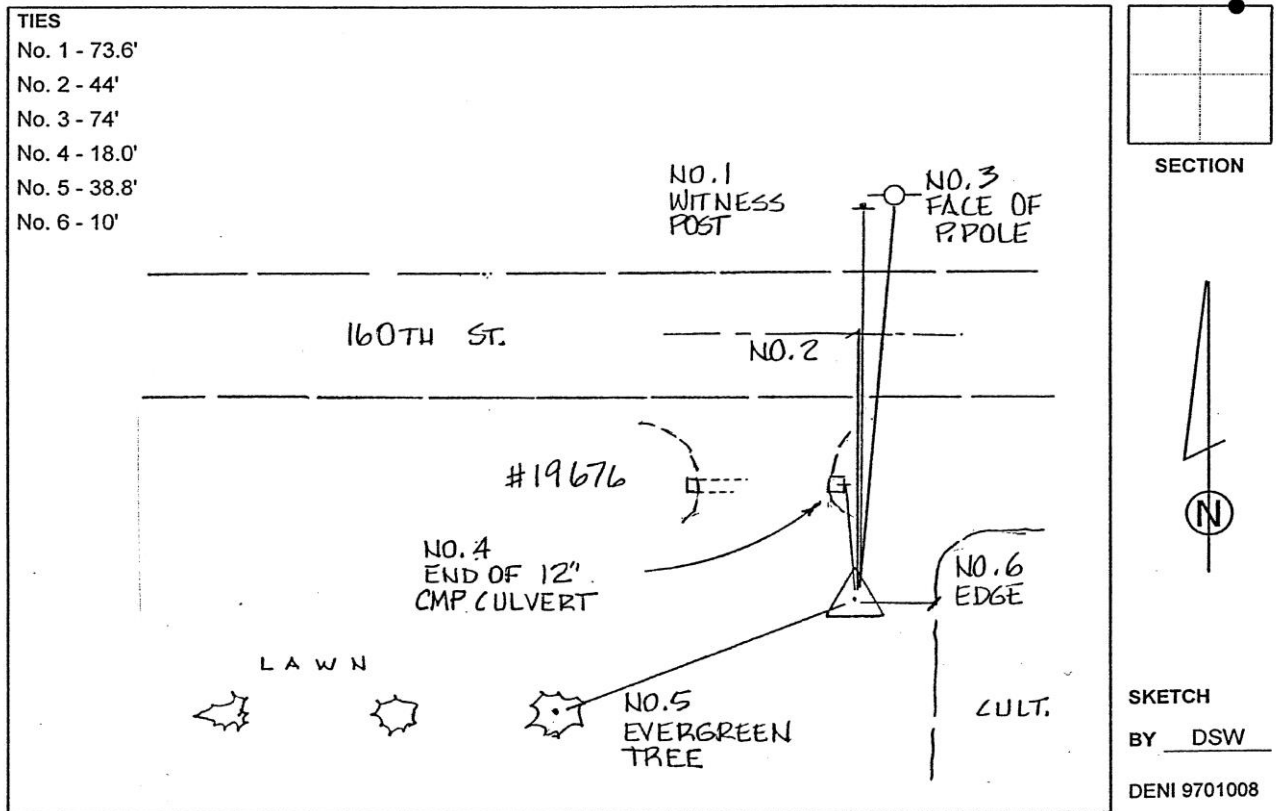
Designation: Grundy Co 7035 (Set by Deni Associates in 1997)

NAD 83(NA2011) Latitude: **N42°28'12.51098"** Longitude: **W92°49'56.43980"**
 NAVD 88 Ortho Height: **1052.630sft** Ellip. Ht: **947.952sft** Geoid12B

Iowa North Zone (1401) Northing: **3635085.740sft** Easting: **5101379.197sft**
 Mapping Angle: **0°27'09"** Combination Scale Factor: **0.9999059704**

IaRCS Zone 5 Northing: **8834989.771sft** Easting: **15342873.378sft**
 Mapping Angle: **-0°23'40"** Combination Scale Factor: **0.9999915902**

Monument Type: 3-1/4" aluminum disk set in the top of a 12" dia. poured-in-place concrete monument.



This document was prepared by Dan Corbin, Inc. on March 11th, 2019 for Grundy County, Iowa.