

Grundy County, Iowa
Horizontal Datum: **NAD 83(NA2011)** - Vertical Datum: **NAVD 1988**
Iowa State Plane North Zone (1401)
Iowa Regional Coordinate System, Zone 5, Waterloo LCC
US Survey Feet
09/30/18

Point Name: **7036**

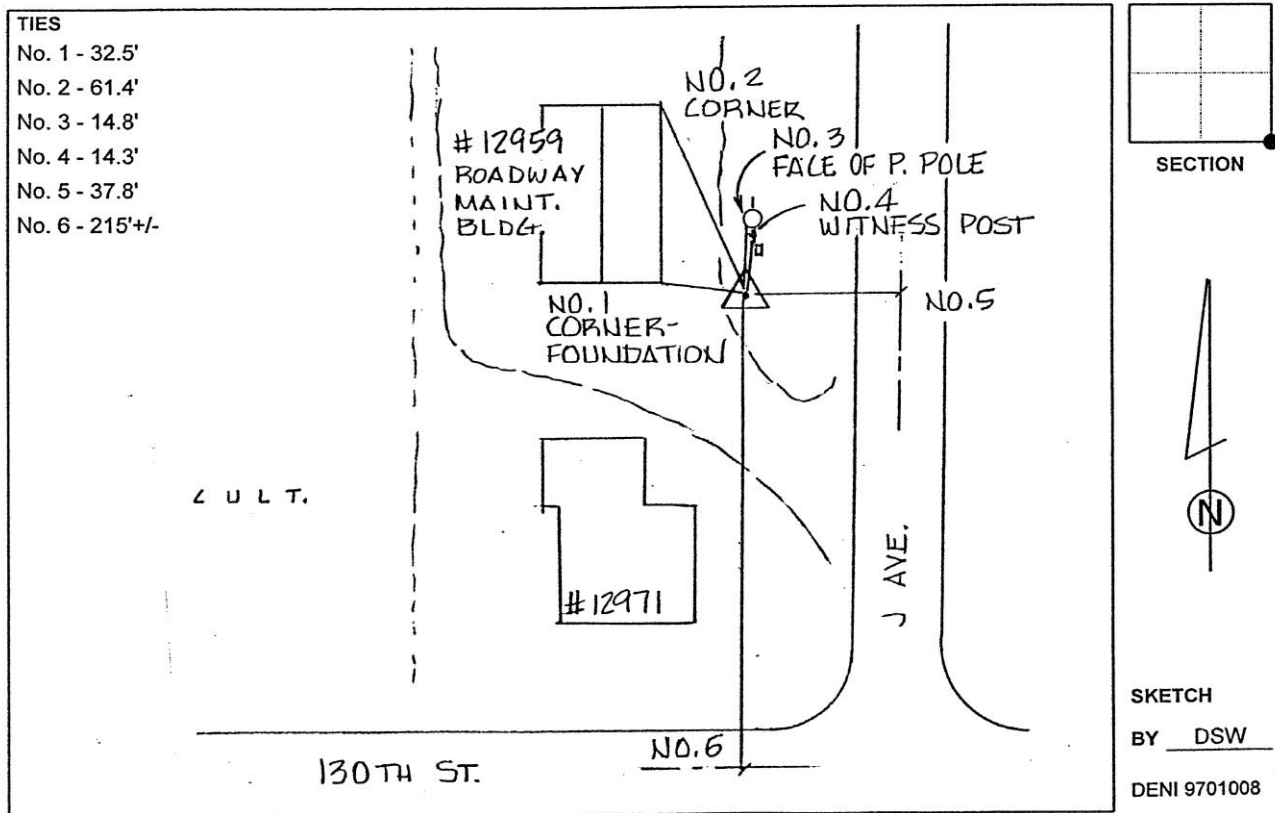
Designation: Grundy Co 7036 (Set by Deni Associates in 1997)

NAD 83(NA2011) Latitude: **N42°30'51.99381"** Longitude: **W92°50'58.96470"**
NAVD 88 Ortho Height: **971.390sft** Ellip. Ht: **866.785sft** Geoid**12B**

Iowa North Zone (1401) Northing: **3651193.101sft** Easting: **5096569.324sft**
Mapping Angle: **0°26'27"** Combination Scale Factor: **0.9999074959**

IaRCS Zone 5 Northing: **8851167.865sft** Easting: **15338301.757sft**
Mapping Angle: **-0°24'23"** Combination Scale Factor: **0.9999933524**

Monument Type: 3-1/4" aluminum disk set in the top of a 12" dia. poured-in-place concrete monument.



This document was prepared by Dan Corbin, Inc. on March 11th, 2019 for Grundy County, Iowa.