

Grundy County, Iowa
Horizontal Datum: **NAD 83(NA2011)** - Vertical Datum: **NAVD 1988**
Iowa State Plane North Zone (1401)
Iowa Regional Coordinate System, Zone 5, Waterloo LCC
US Survey Feet
09/30/18

Point Name: **7039**

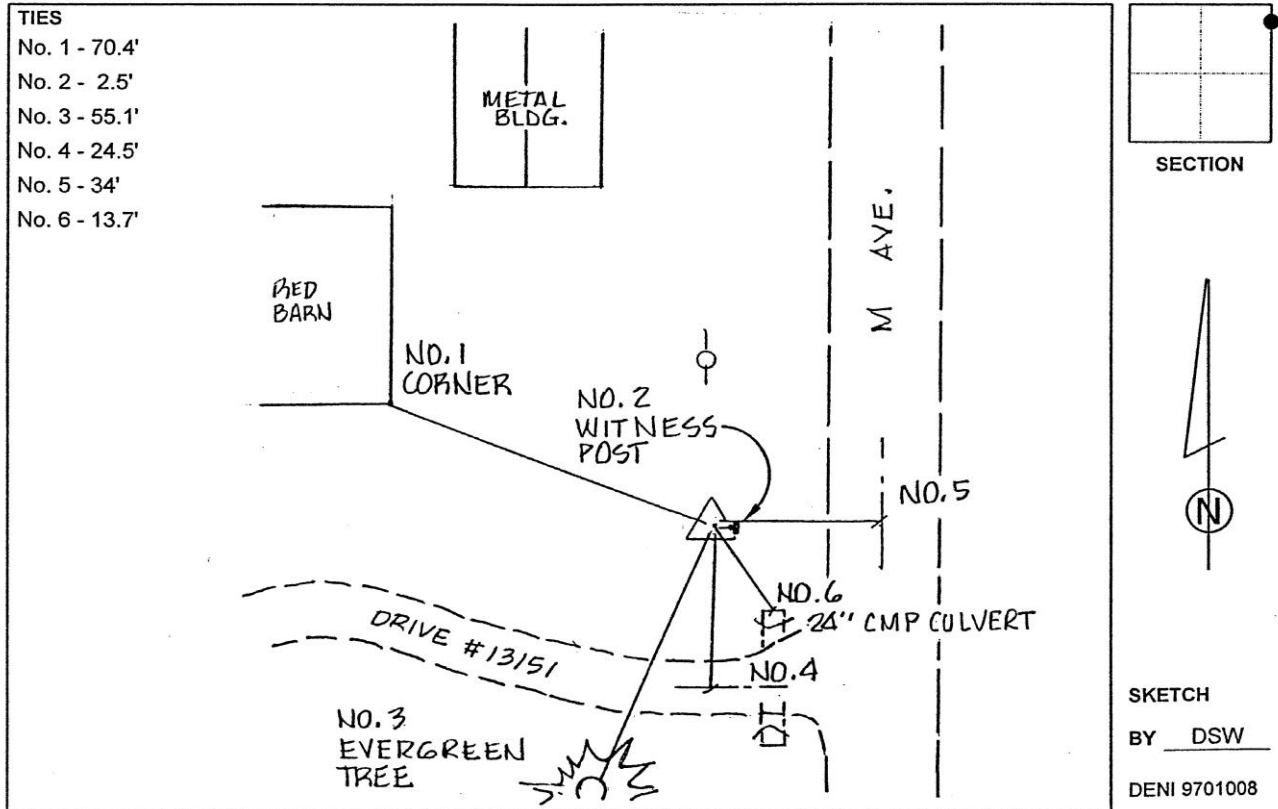
Designation: Grundy Co 7039 (Set by Deni Associates in 1997)

NAD 83(NA2011) Latitude: **N42°30'41.65676"** Longitude: **W92°47'26.46510"**
NAVD 88 Ortho Height: **1032.060sft** Ellip. Ht: **927.461sft** Geoid**12B**

Iowa North Zone (1401) Northing: **3650274.689sft** Easting: **5112491.768sft**
Mapping Angle: **0°28'51"** Combination Scale Factor: **0.9999047304**

IaRCS Zone 5 Northing: **8850014.068sft** Easting: **15354210.250sft**
Mapping Angle: **-0°21'59"** Combination Scale Factor: **0.9999905713**

Monument Type: 3-1/4" aluminum disk set in the top of a 12" dia. poured-in-place concrete monument.



This document was prepared by Dan Corbin, Inc. on March 11th, 2019 for Grundy County, Iowa.