

**Grundy County, Iowa**

Horizontal Datum: **NAD 83(NA2011)** - Vertical Datum: **NAVD 1988**

Iowa State Plane North Zone (1401)

Iowa Regional Coordinate System, Zone 5, Waterloo LCC

US Survey Feet

**09/30/18**

Point Name: **7040**

**Designation:** Grundy Co 7040 (Set by Deni Associates in 1997)

NAD 83(NA2011) Latitude: **N42°28'12.50390"** Longitude: **W92°47'01.93945"**

NAVD 88 Ortho Height: **1031.890sft** Ellip. Ht: **927.254sft** **Geoid12B**

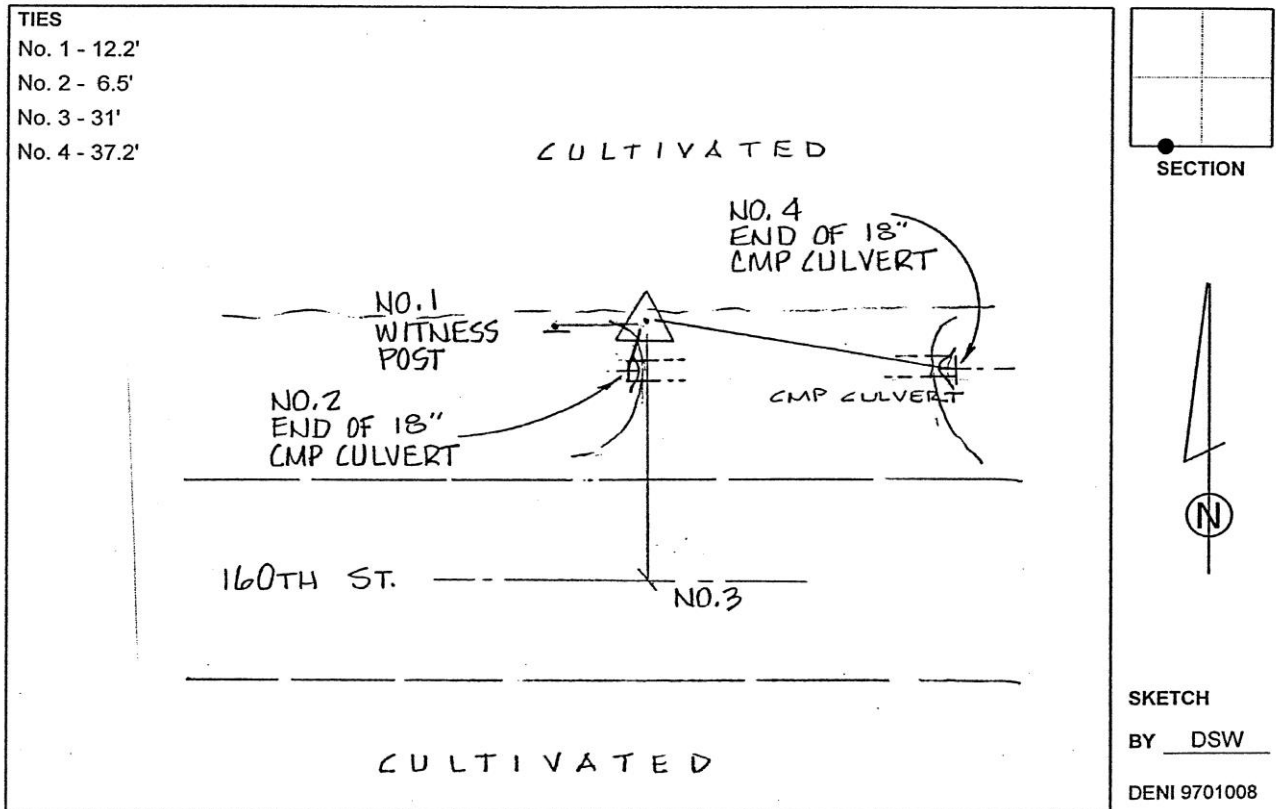
**Iowa North Zone (1401)** Northing: **3635192.053sft** Easting: **5114456.422sft**

Mapping Angle: **0°29'07"** Combination Scale Factor: **0.9999069598**

**IaRCS Zone 5** Northing: **8834902.741sft** Easting: **15355951.865sft**

Mapping Angle: **-0°21'42"** Combination Scale Factor: **0.9999925796**

**Monument Type:** 3-1/4" aluminum disk set in the top of a 12" dia. poured-in-place concrete monument.



*This document was prepared by Dan Corbin, Inc. on March 11<sup>th</sup>, 2019 for Grundy County, Iowa.*