

Grundy County, Iowa
 Horizontal Datum: **NAD 83(NA2011)** - Vertical Datum: **NAVD 1988**
 Iowa State Plane North Zone (1401)
 Iowa Regional Coordinate System, Zone 5, Waterloo LCC
 US Survey Feet
09/30/18

Point Name: **7042**

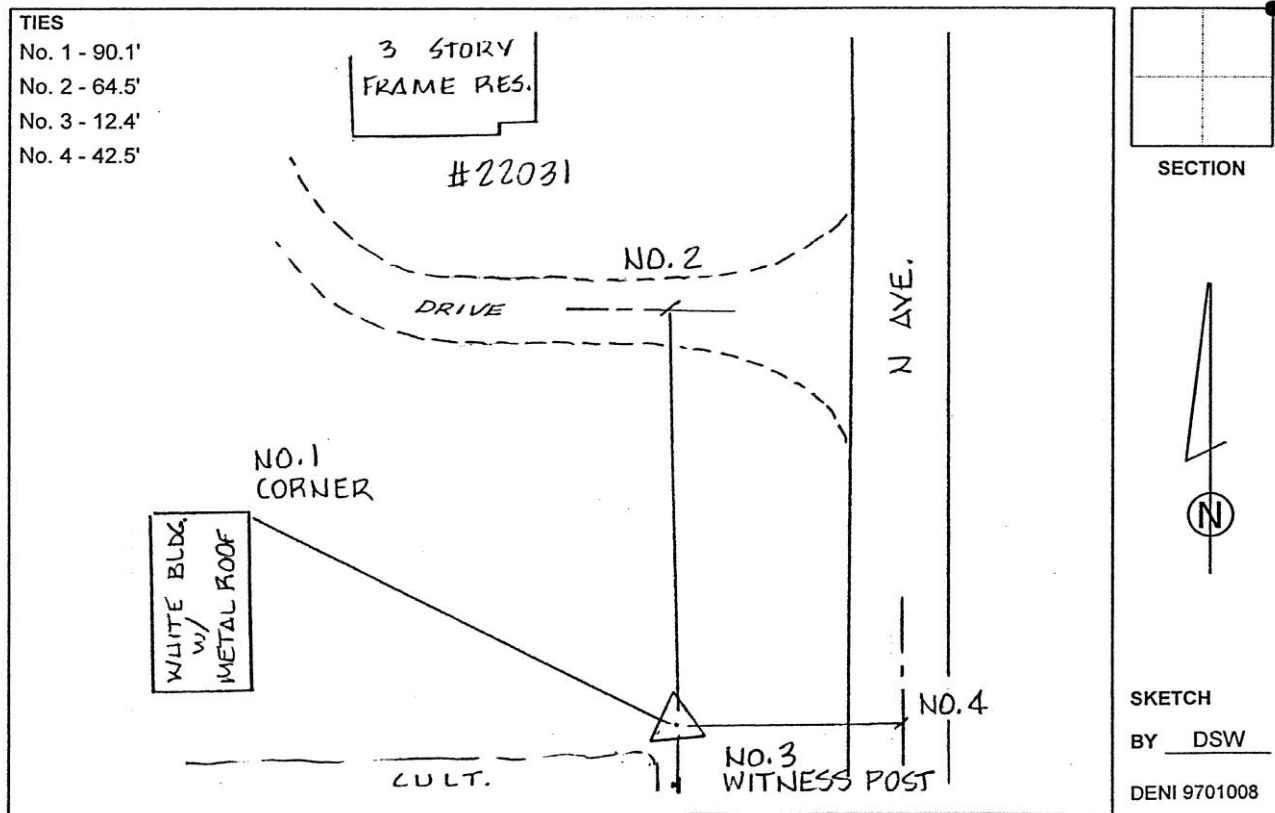
Designation: Grundy Co 7042 (Set by Deni Associates in 1997)

NAD 83(NA2011) Latitude: **N42°22'59.50009"** Longitude: **W92°46'06.57025"**
 NAVD 88 Ortho Height: **1040.490sft** Ellip. Ht: **935.794sft** **Geoid12B**

Iowa North Zone (1401) Northing: **3603543.785sft** Easting: **5118879.992sft**
 Mapping Angle: **0°29'45"** Combination Scale Factor: **0.9999128972**

IaRCS Zone 5 Northing: **8803189.827sft** Easting: **15359907.418sft**
 Mapping Angle: **-0°21'05"** Combination Scale Factor: **0.9999980536**

Monument Type: 3-1/4" aluminum disk set in the top of a 12" dia. poured-in-place concrete monument.



This document was prepared by Dan Corbin, Inc. on March 11th, 2019 for Grundy County, Iowa.