

Grundy County, Iowa

Horizontal Datum: **NAD 83(NA2011)** - Vertical Datum: **NAVD 1988**

Iowa State Plane North Zone (1401)

Iowa Regional Coordinate System, Zone 5, Waterloo LCC

US Survey Feet

09/30/18

Point Name: **7043**

Designation: Grundy Co 7043 (Set by Deni Associates in 1997)

NAD 83(NA2011) Latitude: **N42°20'23.28200"** Longitude: **W92°46'03.05128"**

NAVD 88 Ortho Height: **1007.830sft** Ellip. Ht: **903.142sft** Geoid**12B**

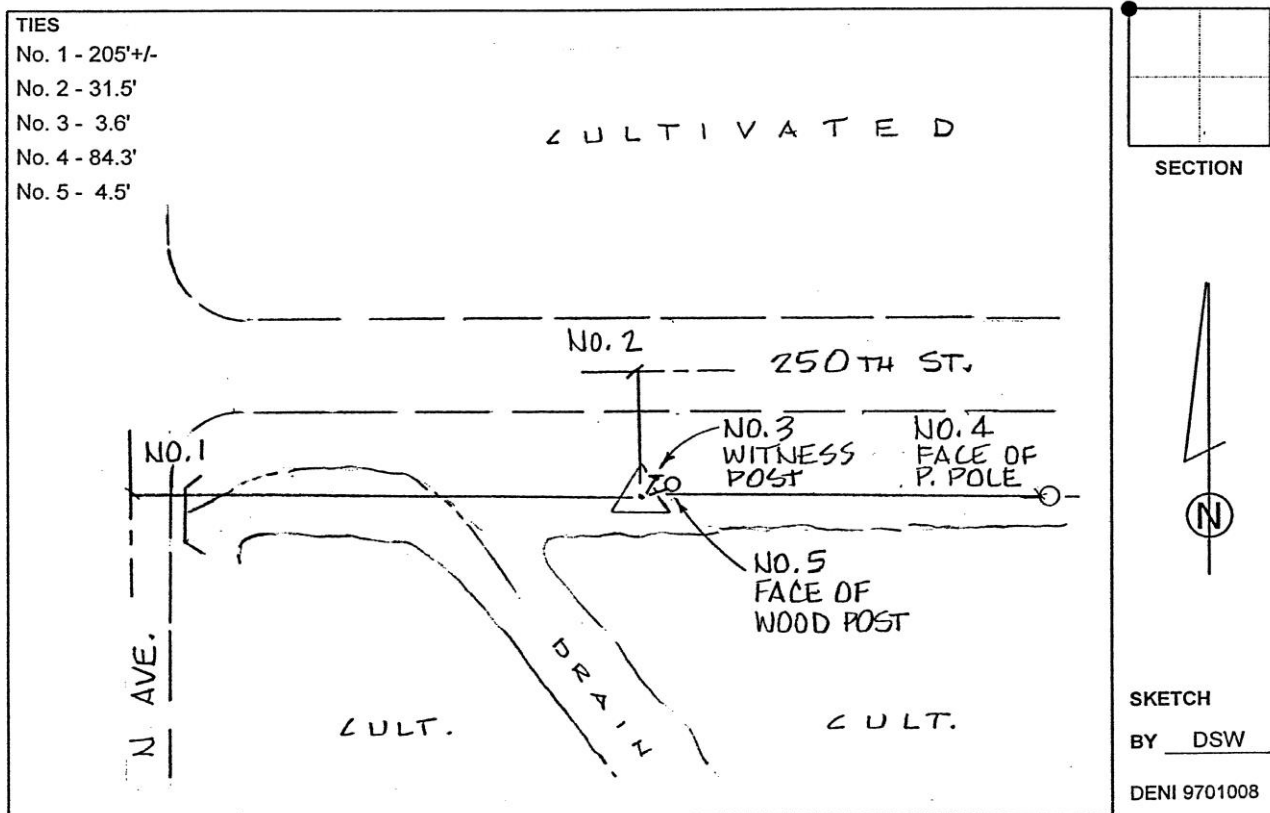
Iowa North Zone (1401) Northing: **3587733.002sft** Easting: **5119281.088sft**

Mapping Angle: **0°29'47"** Combination Scale Factor: **0.9999184795**

IaRCS Zone 5 Northing: **8787373.497sft** Easting: **15360074.746sft**

Mapping Angle: **-0°21'02"** Combination Scale Factor: **1.0000034051**

Monument Type: 3-1/4" aluminum disk set in the top of a 12" dia. poured-in-place concrete monument.



This document was prepared by Dan Corbin, Inc. on March 11th, 2019 for Grundy County, Iowa.