

Grundy County, Iowa
 Horizontal Datum: **NAD 83(NA2011)** - Vertical Datum: **NAVD 1988**
 Iowa State Plane North Zone (1401)
 Iowa Regional Coordinate System, Zone 5, Waterloo LCC
 US Survey Feet
09/30/18

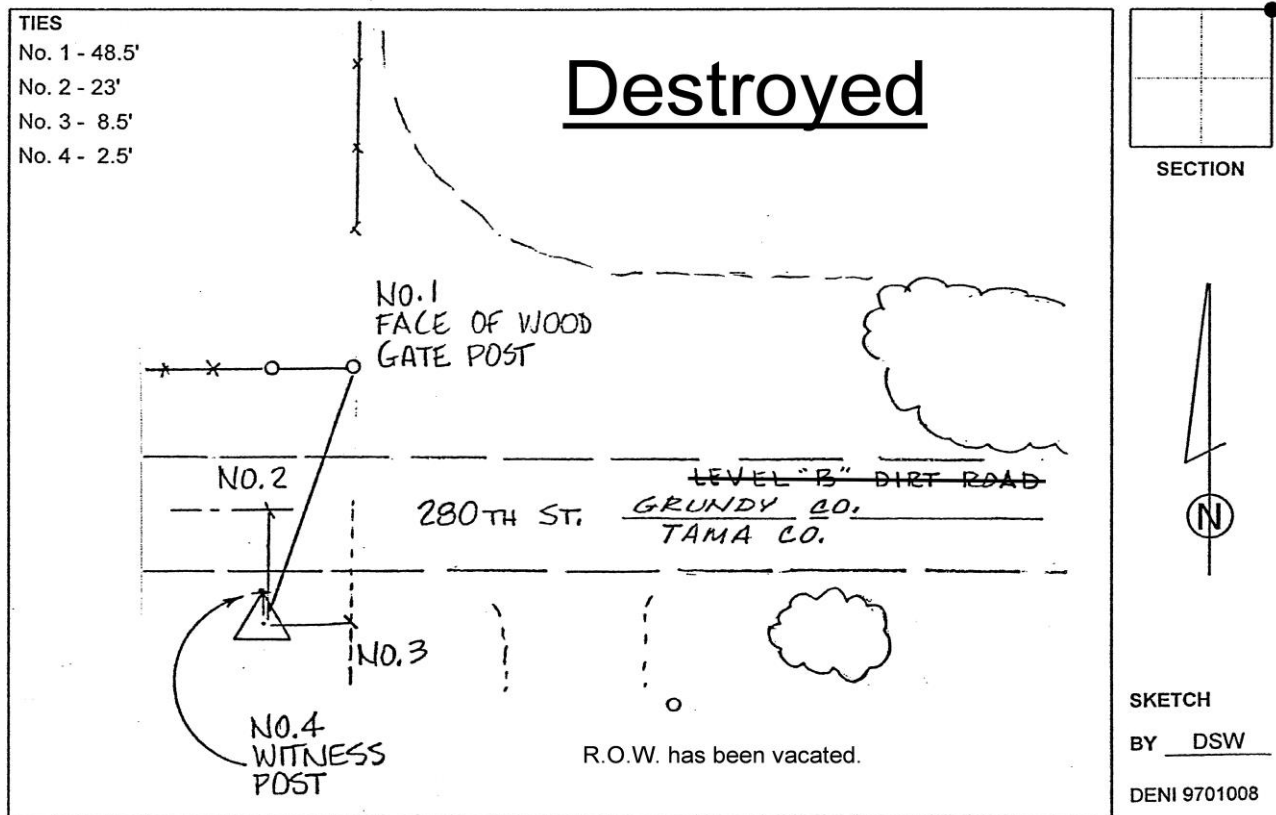
Point Name: **7044 (Destroyed)**

Designation: Grundy Co 7044 (Set by Deni Associates in 1997)

NAD 83(1996) Latitude: ~~42 17 47.72045N~~ Longitude: ~~92 46 04.94956W~~
 NAVD 88 Ortho Height: ~~1054.510~~sft Ellip. Ht: ~~950.018~~sft

Iowa North Zone (1401) Northing: ~~3571985.210~~sft Easting: ~~5119274.870~~sft
 Mapping Angle: ~~0 29 45.8~~ Combination Scale Factor: ~~0.9999662200~~

Monument Type: 3-1/4" aluminum disk set in the top of a 12" dia. poured-in-place concrete monument.



This document was prepared by Dan Corbin, Inc. on March 11th, 2019 for Grundy County, Iowa.