

Grundy County, Iowa

Horizontal Datum: **NAD 83(NA2011)** - Vertical Datum: **NAVD 1988**

Iowa State Plane North Zone (1401)

Iowa Regional Coordinate System, Zone 5, Waterloo LCC

US Survey Feet

09/30/18

Point Name: **7045**

Designation: Grundy Co 7045 (Set by Deni Associates in 1997)

NAD 83(NA2011) Latitude: **N42°15'13.14555"** Longitude: **W92°46'17.88190"**

NAVD 88 Ortho Height: **1059.170sft** Ellip. Ht: **954.573sft** **Geoid12B**

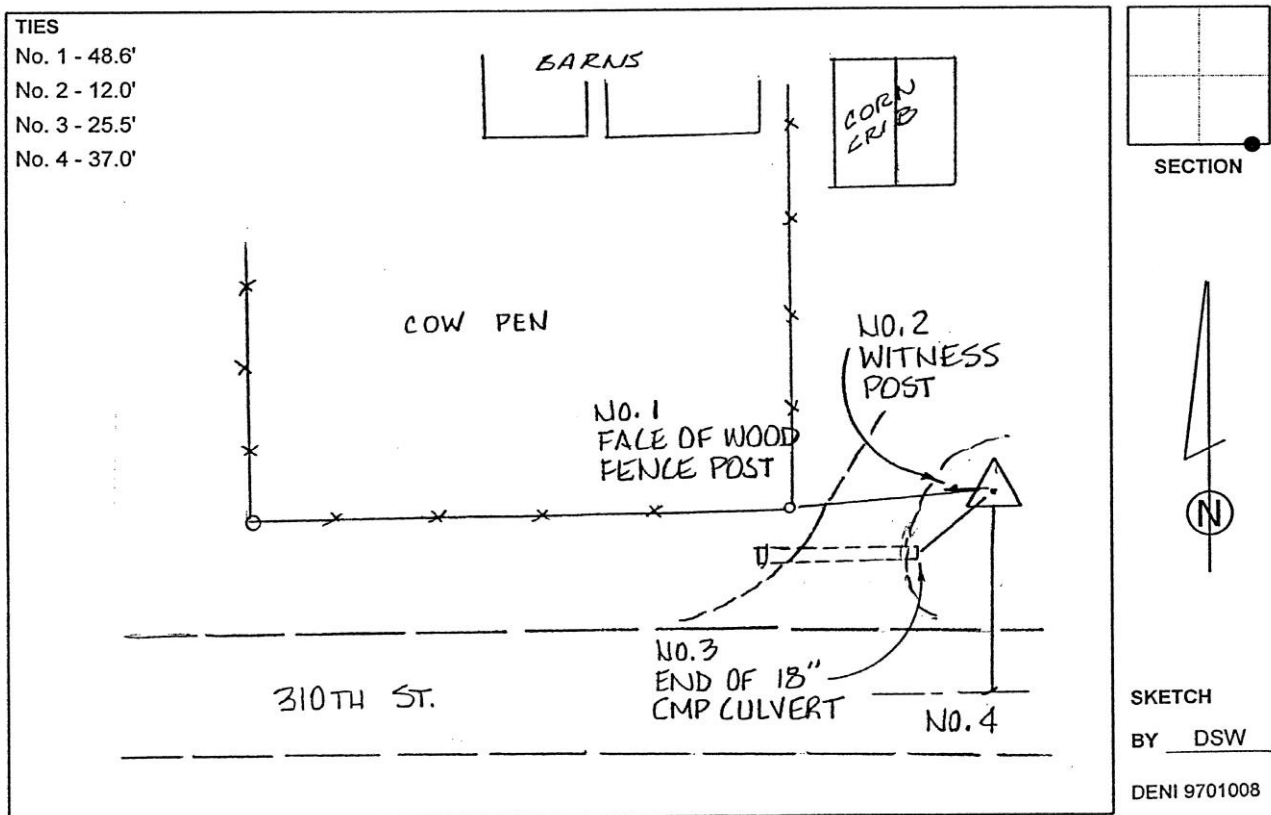
Iowa North Zone (1401) Northing: **3556330.158sft** Easting: **5118437.840sft**

Mapping Angle: **0°29'37"** Combination Scale Factor: **0.9999256894**

laRCS Zone 5 Northing: **8755983.892sft** Easting: **15358767.235sft**

Mapping Angle: **-0°21'12"** Combination Scale Factor: **1.0000101568**

Monument Type: 3-1/4" aluminum disk set in the top of a 12" dia. poured-in-place concrete monument.



This document was prepared by Dan Corbin, Inc. on March 11th, 2019 for Grundy County, Iowa.