

Grundy County, Iowa
 Horizontal Datum: **NAD 83(NA2011)** - Vertical Datum: **NAVD 1988**
 Iowa State Plane North Zone (1401)
 Iowa Regional Coordinate System, Zone 5, Waterloo LCC
 US Survey Feet
09/30/18

Point Name: **7046**

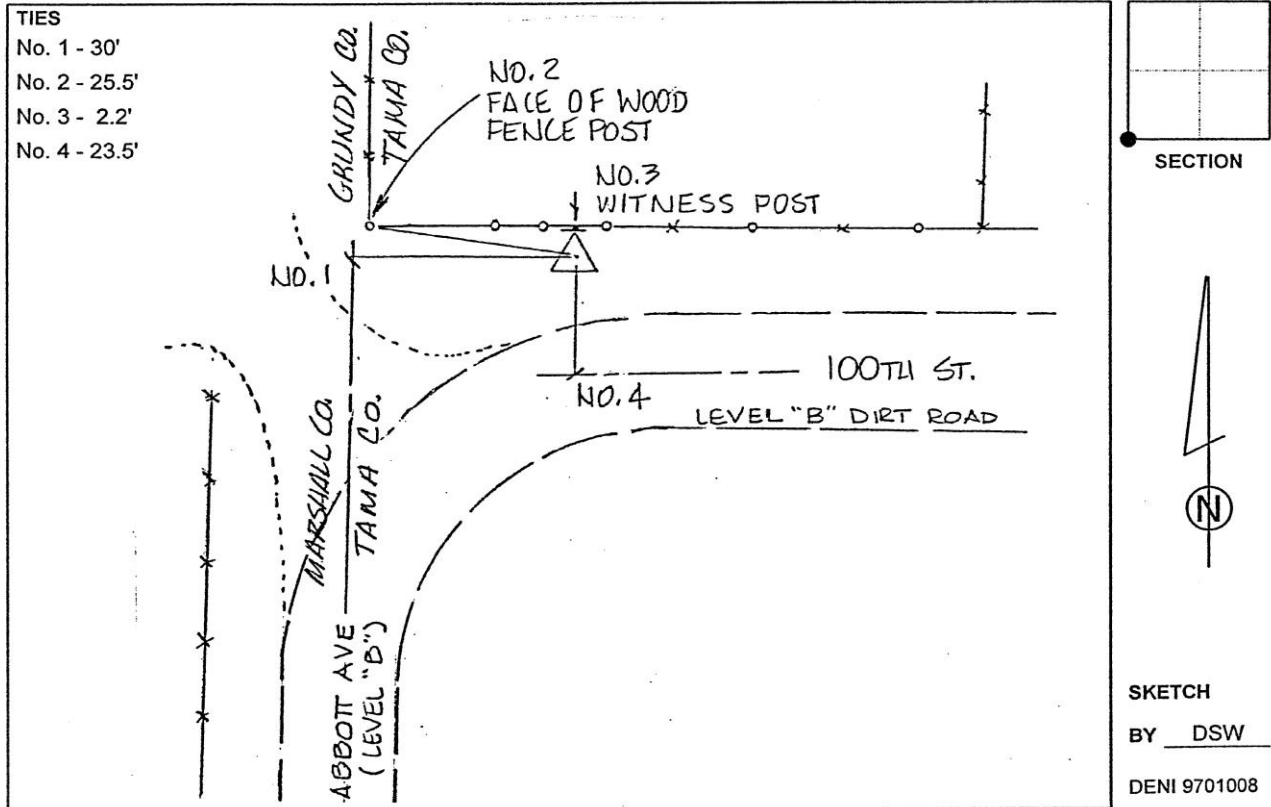
Designation: Grundy Co 7046 (Set by Deni Associates in 1997)

NAD 83(NA2011) Latitude: **N42°12'36.84354"** Longitude: **W92°46'02.64930"**
 NAVD 88 Ortho Height: **982.170sft** Ellip. Ht: **877.662sft** **Geoid12B**

Iowa North Zone (1401) Northing: **3540518.619sft** Easting: **5119720.438sft**
 Mapping Angle: **0°29'47"** Combination Scale Factor: **0.9999350863**

IaRCS Zone 5 Northing: **8740153.785sft** Easting: **15359816.031sft**
 Mapping Angle: **-0°21'02"** Combination Scale Factor: **1.0000193237**

Monument Type: 3-1/4" aluminum disk set in the top of a 12" dia. poured-in-place concrete monument.



This document was prepared by Dan Corbin, Inc. on March 11th, 2019 for Grundy County, Iowa.