

**Grundy County, Iowa**  
 Horizontal Datum: **NAD 83(NA2011)** - Vertical Datum: **NAVD 1988**  
 Iowa State Plane North Zone (1401)  
 Iowa Regional Coordinate System, Zone 5, Waterloo LCC  
 US Survey Feet  
**09/30/18**

Point Name: **7049**

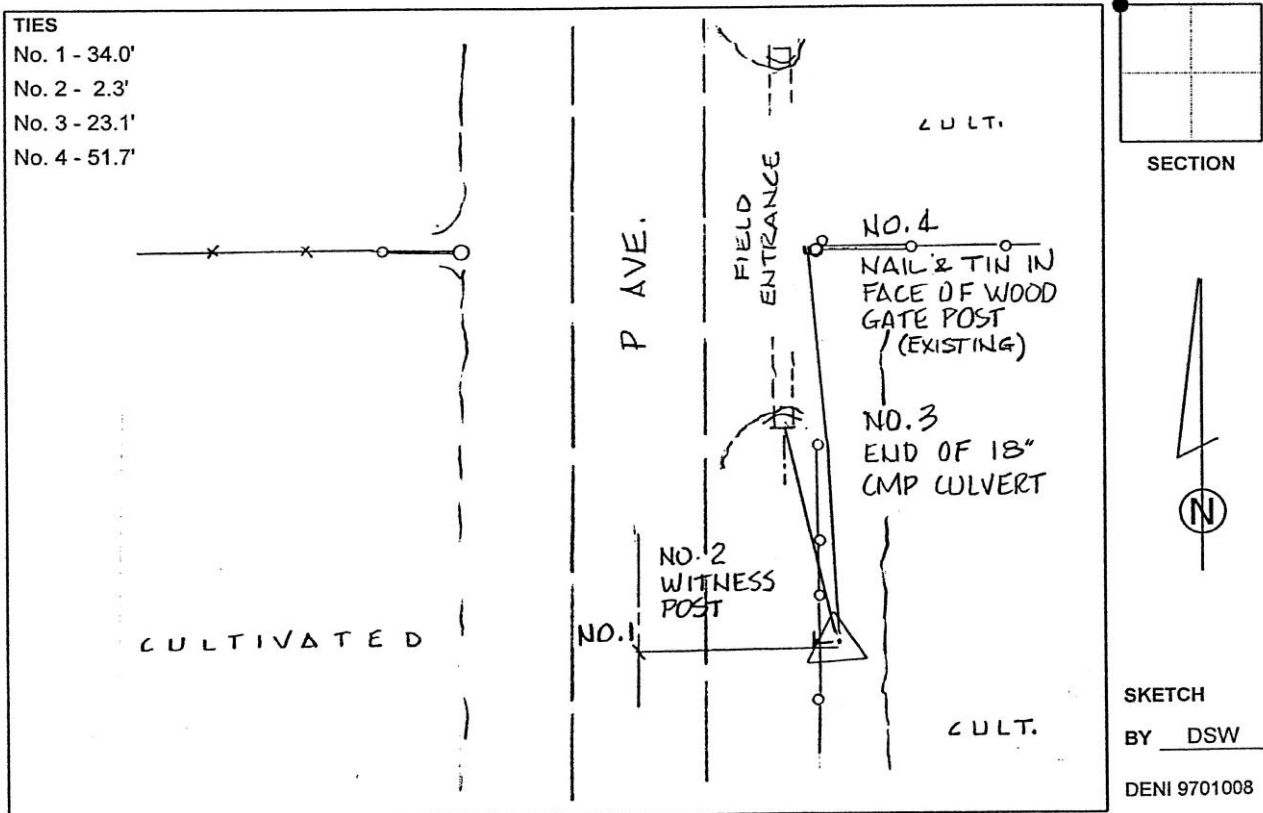
**Designation:** Grundy Co 7049 (Set by Deni Associates in 1997)

NAD 83(NA2011) Latitude: **N42°23'01.93511"** Longitude: **W92°43'45.39086"**  
 NAVD 88 Ortho Height: **995.550sft** Ellip. Ht: **890.936sft** **Geoid12B**

**Iowa North Zone (1401)** Northing: **3603884.404sft** Easting: **5129472.494sft**  
 Mapping Angle: **0°31'20"** Combination Scale Factor: **0.9999149831**

**laRCS Zone 5** Northing: **8803373.830sft** Easting: **15370504.701sft**  
 Mapping Angle: **-0°19'29"** Combination Scale Factor: **1.0000001433**

**Monument Type:** 3-1/4" aluminum disk set in the top of a 12" dia. poured-in-place concrete monument.



*This document was prepared by Dan Corbin, Inc. on March 11<sup>th</sup>, 2019 for Grundy County, Iowa.*