

**Grundy County, Iowa**  
 Horizontal Datum: **NAD 83(NA2011)** - Vertical Datum: **NAVD 1988**  
 Iowa State Plane North Zone (1401)  
 Iowa Regional Coordinate System, Zone 5, Waterloo LCC  
 US Survey Feet  
**09/30/18**

Point Name: **7050**

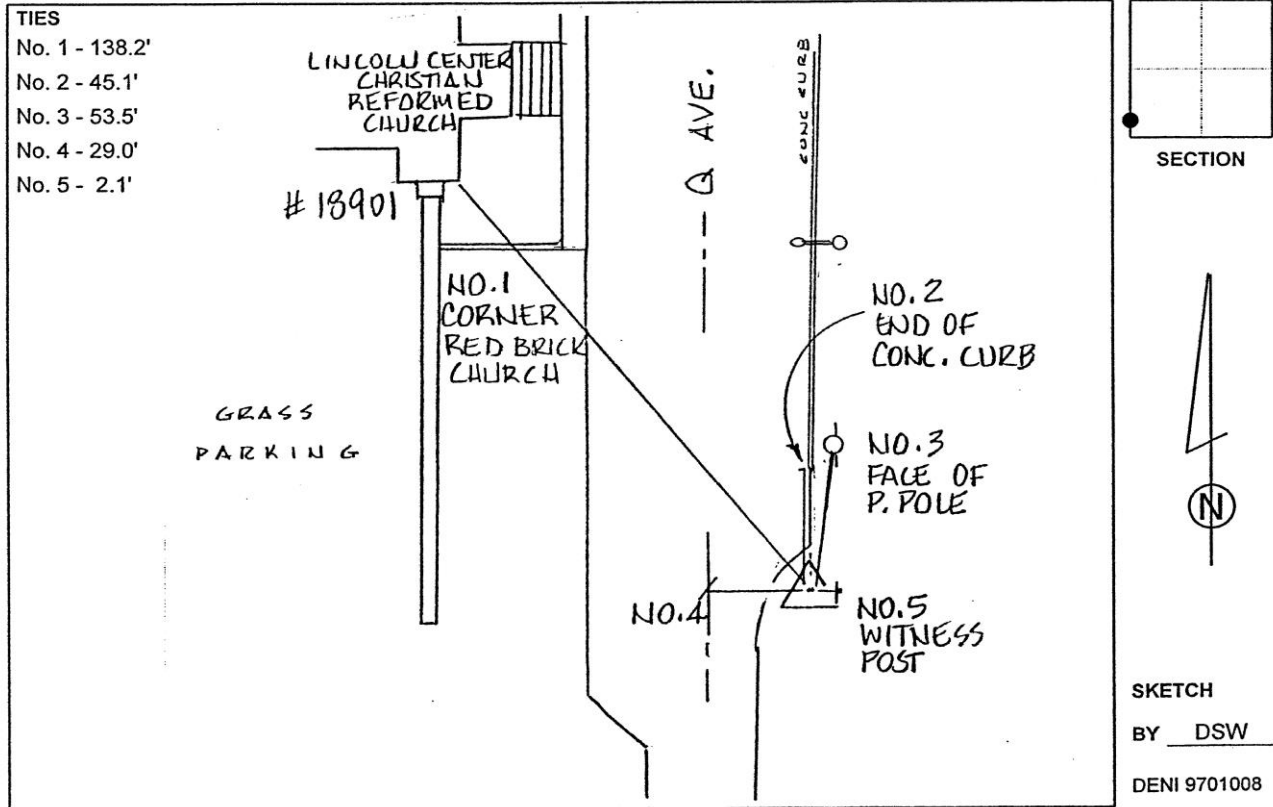
**Designation:** Grundy Co 7050 (Set by Deni Associates in 1997)

NAD 83(NA2011) Latitude: **N42°25'42.95145"** Longitude: **W92°42'36.13166"**  
 NAVD 88 Ortho Height: **985.714sft** Ellip. Ht: **881.216sft** Geoid**12B**

**Iowa North Zone (1401)** Northing: **3620231.116sft** Easting: **5134517.644sft**  
 Mapping Angle: **0°32'07"** Combination Scale Factor: **0.9999119071**

**IaRCS Zone 5** Northing: **8819645.557sft** Easting: **15375791.415sft**  
 Mapping Angle: **-0°18'42"** Combination Scale Factor: **0.9999973056**

**Monument Type:** 3-1/4" aluminum disk set in the top of a 12" dia. poured-in-place concrete monument.



*This document was prepared by Dan Corbin, Inc. on March 11<sup>th</sup>, 2019 for Grundy County, Iowa.*