

Grundy County, Iowa
Horizontal Datum: **NAD 83(NA2011)** - Vertical Datum: **NAVD 1988**
Iowa State Plane North Zone (1401)
Iowa Regional Coordinate System, Zone 5, Waterloo LCC
US Survey Feet
09/30/18

Point Name: **7051**

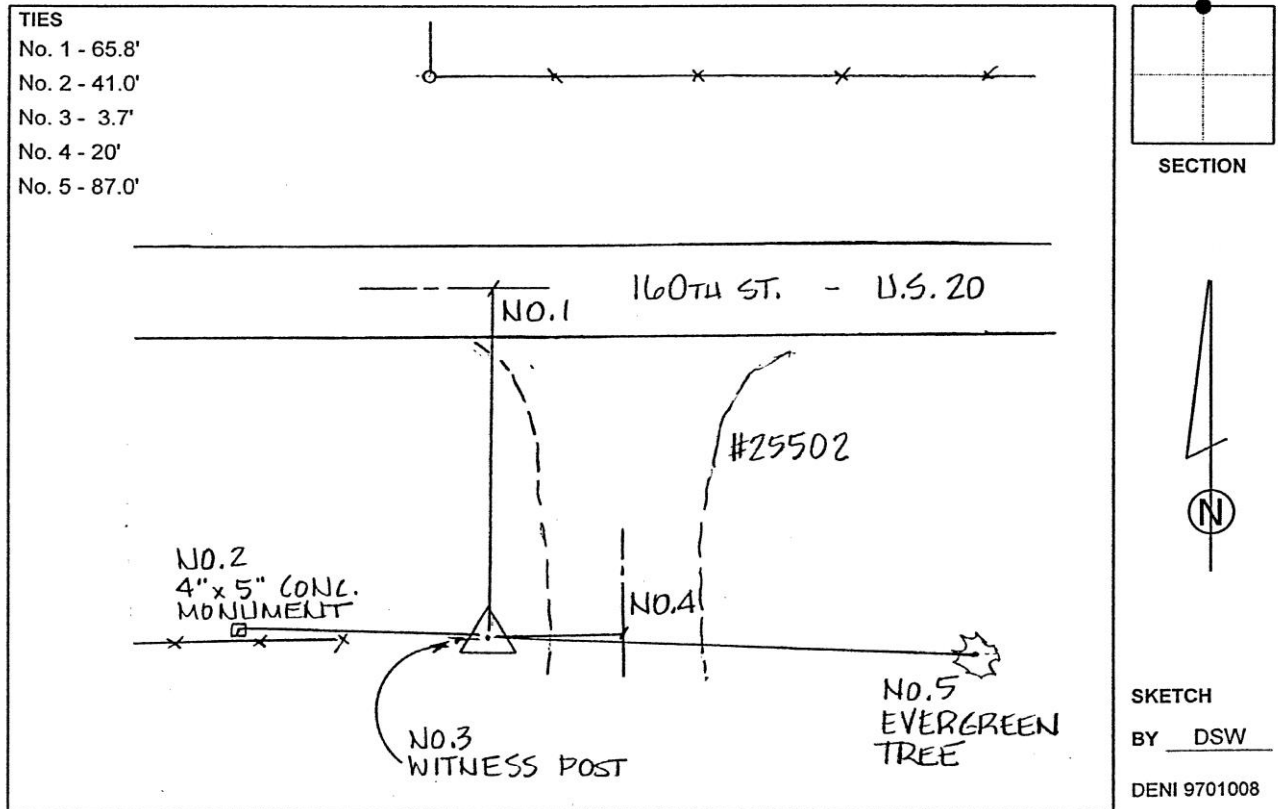
Designation: Grundy Co 7051 (Set by Deni Associates in 1997)

NAD 83(NA2011) Latitude: **N42°28'11.15218"** Longitude: **W92°43'17.00503"**
NAVD 88 Ortho Height: **1042.230sft** Ellip. Ht: **937.758sft** **Geoid12B**

Iowa North Zone (1401) Northing: **3635204.252sft** Easting: **5131314.383sft**
Mapping Angle: **0°31'40"** Combination Scale Factor: **0.9999064802**

IaRCS Zone 5 Northing: **8834665.697sft** Easting: **15372809.607sft**
Mapping Angle: **-0°19'10"** Combination Scale Factor: **0.9999920980**

Monument Type: 3-1/4" aluminum disk set in the top of a 12" dia. poured-in-place concrete monument.



This document was prepared by Dan Corbin, Inc. on March 11th, 2019 for Grundy County, Iowa.