

Grundy County, Iowa

Horizontal Datum: **NAD 83(NA2011)** - Vertical Datum: **NAVD 1988**

Iowa State Plane North Zone (1401)

Iowa Regional Coordinate System, Zone 5, Waterloo LCC

US Survey Feet

09/30/18

Point Name: **7053**

Designation: Grundy Co 7053 (Set by Deni Associates in 1997)

NAD 83(NA2011) Latitude: **N42°33'20.23216"** Longitude: **W92°43'55.32913"**

NAVD 88 Ortho Height: **957.480sft** Ellip. Ht: **852.997sft** **Geoid12B**

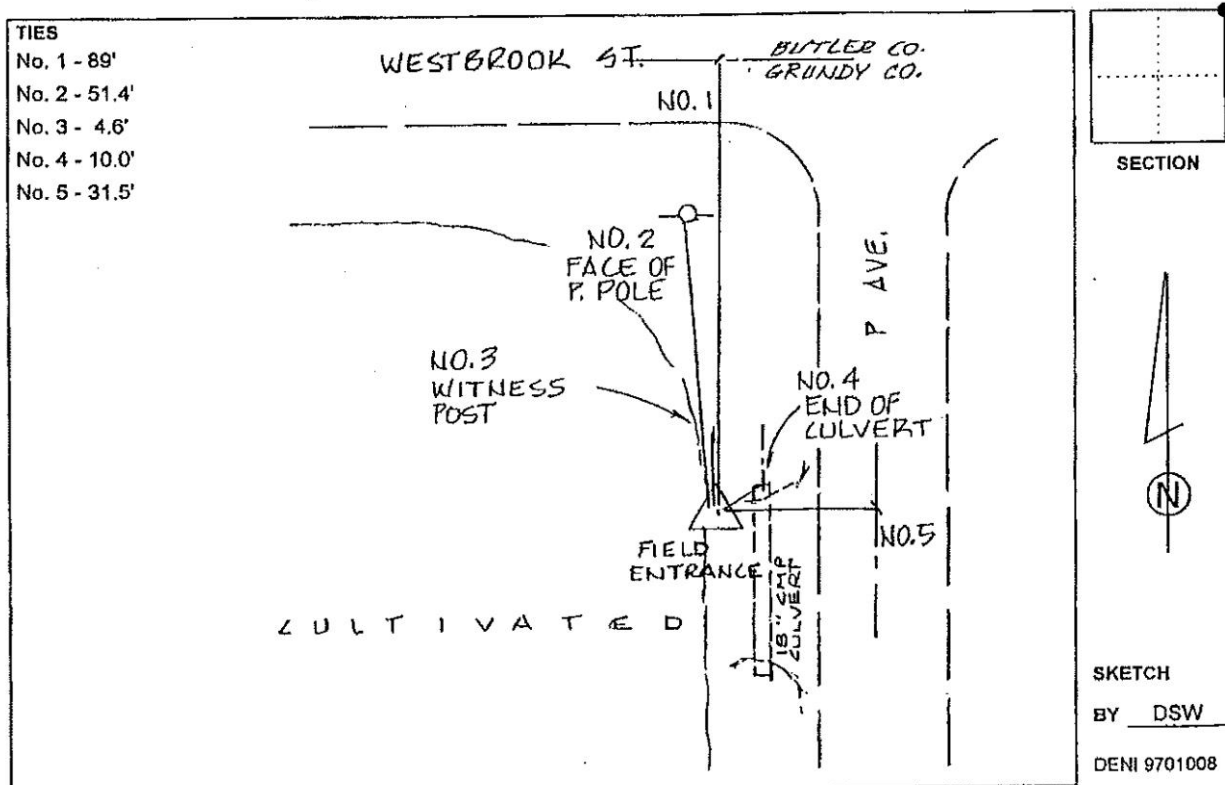
Iowa North Zone (1401) Northing: **3666464.776sft** Easting: **5128158.124sft**

Mapping Angle: **0°31'14"** Combination Scale Factor: **0.9999064997**

IaRCS Zone 5 Northing: **8865972.153sft** Easting: **15370115.607sft**

Mapping Angle: **-0°19'36"** Combination Scale Factor: **0.9999925762**

Monument Type: 3-1/4" aluminum disk set in the top of a 12" dia. poured-in-place concrete monument.



This document was prepared by Dan Corbin, Inc. on March 11th, 2019 for Grundy County, Iowa.