

Grundy County, Iowa

Horizontal Datum: **NAD 83(NA2011)** - Vertical Datum: **NAVD 1988**

Iowa State Plane North Zone (1401)

Iowa Regional Coordinate System, Zone 5, Waterloo LCC

US Survey Feet

09/30/18

Point Name: **7054**

Designation: Grundy Co 7054 (Set by Deni Associates in 1997)

NAD 83(NA2011) Latitude: **N42°33'20.67875"** Longitude: **W92°40'28.02602"**

NAVD 88 Ortho Height: **923.982sft** Ellip. Ht: **819.661sft** **Geoid12B**

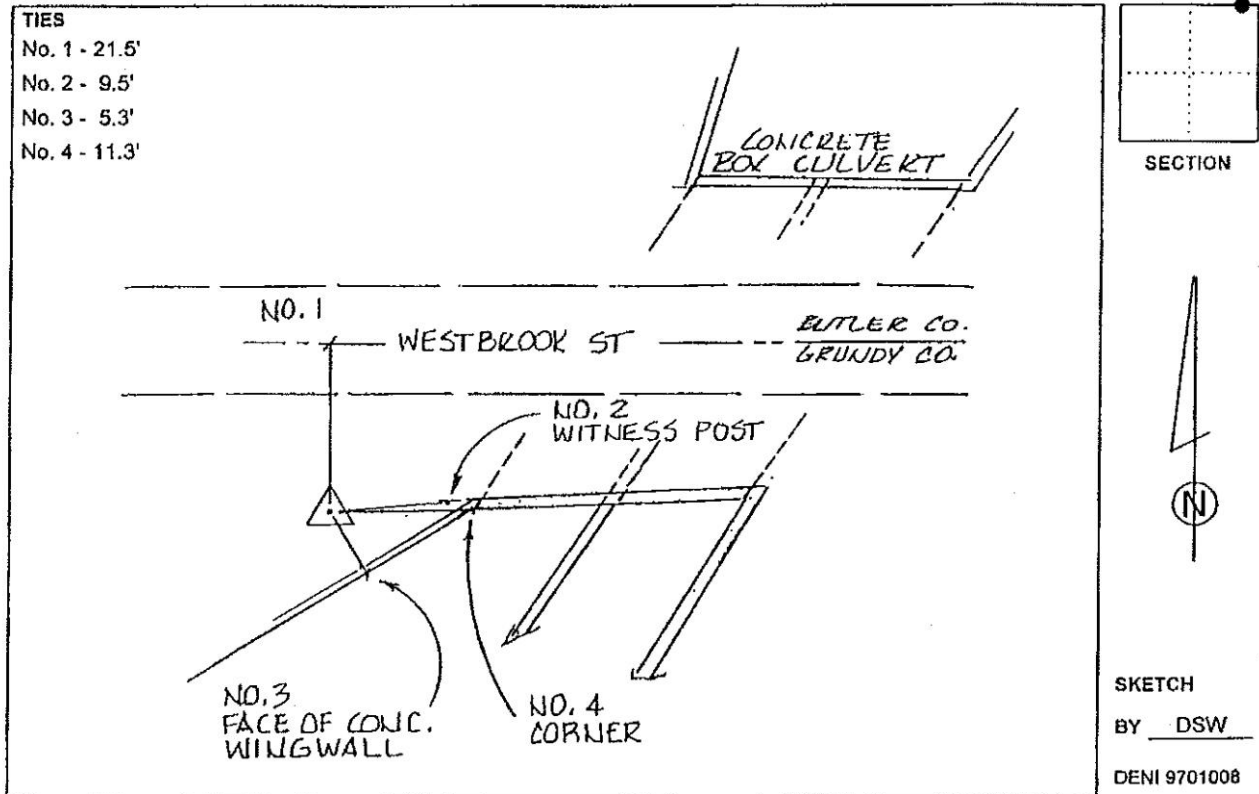
Iowa North Zone (1401) Northing: **3666656.202sft** Easting: **5143671.783sft**

Mapping Angle: **0°33'34"** Combination Scale Factor: **0.9999080888**

IaRCS Zone 5 Northing: **8865934.205sft** Easting: **15385631.736sft**

Mapping Angle: **-0°17'15"** Combination Scale Factor: **0.9999941661**

Monument Type: 3-1/4" aluminum disk set in the top of a 12" dia. poured-in-place concrete monument.



This document was prepared by Dan Corbin, Inc. on March 11th, 2019 for Grundy County, Iowa.