

**Grundy County, Iowa**  
Horizontal Datum: **NAD 83(NA2011)** - Vertical Datum: **NAVD 1988**  
Iowa State Plane North Zone (1401)  
Iowa Regional Coordinate System, Zone 5, Waterloo LCC  
US Survey Feet  
**09/30/18**

Point Name: **7055**

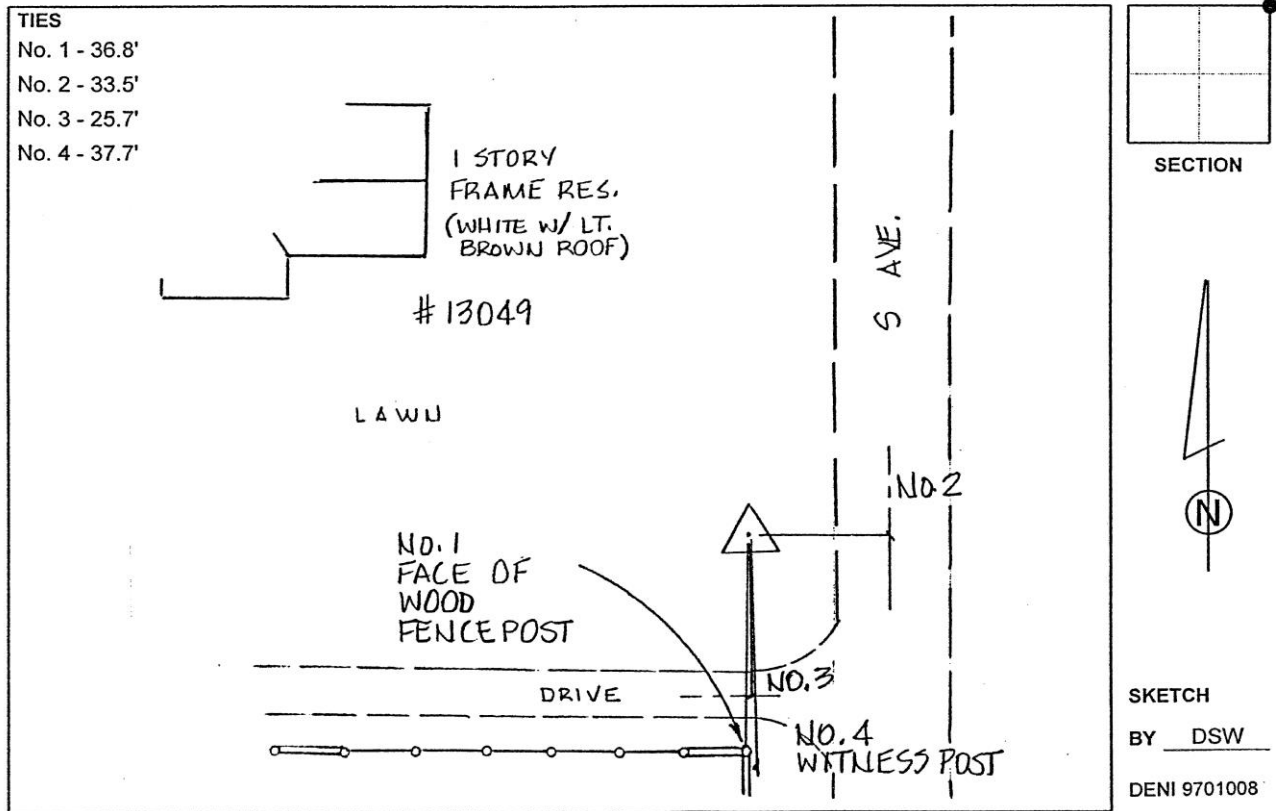
**Designation:** Grundy Co 7055 (Set by Deni Associates in 1997)

NAD 83(NA2011) Latitude: **N42°30'46.41516"** Longitude: **W92°40'22.20006"**  
NAVD 88 Ortho Height: **1021.490sft** Ellip. Ht: **917.201sft** **Geoid12B**

**Iowa North Zone (1401)** Northing: **3651045.106sft** Easting: **5144260.575sft**  
Mapping Angle: **0°33'38"** Combination Scale Factor: **0.9999051586**

**IaRCS Zone 5** Northing: **8850314.767sft** Easting: **15385989.702sft**  
Mapping Angle: **-0°17'11"** Combination Scale Factor: **0.9999910066**

**Monument Type:** 3-1/4" aluminum disk set in the top of a 12" dia. poured-in-place concrete monument.



*This document was prepared by Dan Corbin, Inc. on March 11<sup>th</sup>, 2019 for Grundy County, Iowa.*