

Grundy County, Iowa
 Horizontal Datum: **NAD 83(NA2011)** - Vertical Datum: **NAVD 1988**
 Iowa State Plane North Zone (1401)
 Iowa Regional Coordinate System, Zone 5, Waterloo LCC
 US Survey Feet
09/30/18

Point Name: **7058**

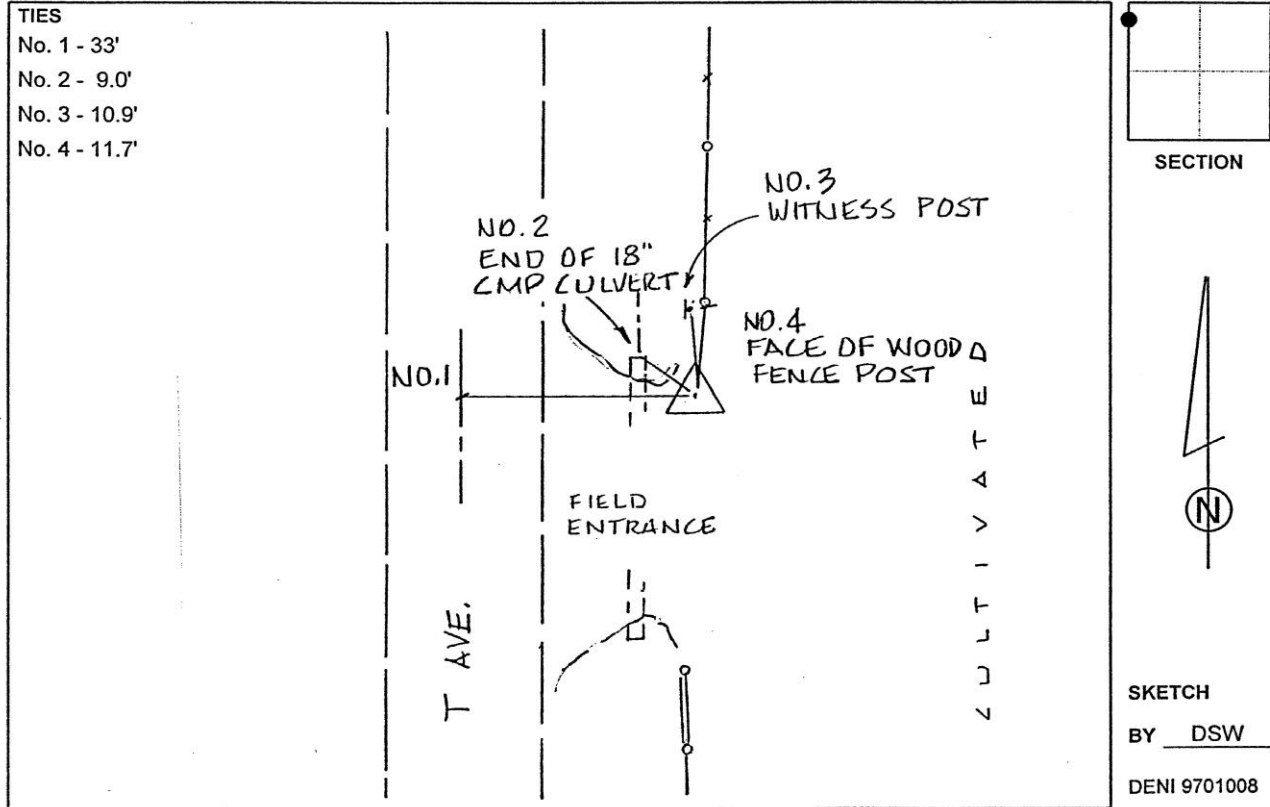
Designation: Grundy Co 7058 (Set by Deni Associates in 1997)

NAD 83(NA2011) Latitude: **N42°23'00.06873"** Longitude: **W92°39'04.64064"**
 NAVD 88 Ortho Height: **992.990sft** Ellip. Ht: **888.637sft** **Geoid12B**

Iowa North Zone (1401) Northing: **3603897.283sft** Easting: **5150542.813sft**
 Mapping Angle: **0°34'31"** Combination Scale Factor: **0.9999151376**

IaRCS Zone 5 Northing: **8803075.182sft** Easting: **15391574.702sft**
 Mapping Angle: **-0°16'19"** Combination Scale Factor: **1.0000002950**

Monument Type: 3-1/4" aluminum disk set in the top of a 12" dia. poured-in-place concrete monument.



This document was prepared by Dan Corbin, Inc. on March 11th, 2019 for Grundy County, Iowa.