

**Grundy County, Iowa**  
 Horizontal Datum: **NAD 83(NA2011)** - Vertical Datum: **NAVD 1988**  
 Iowa State Plane North Zone (1401)  
 Iowa Regional Coordinate System, Zone 5, Waterloo LCC  
 US Survey Feet  
**09/30/18**

Point Name: **7059**

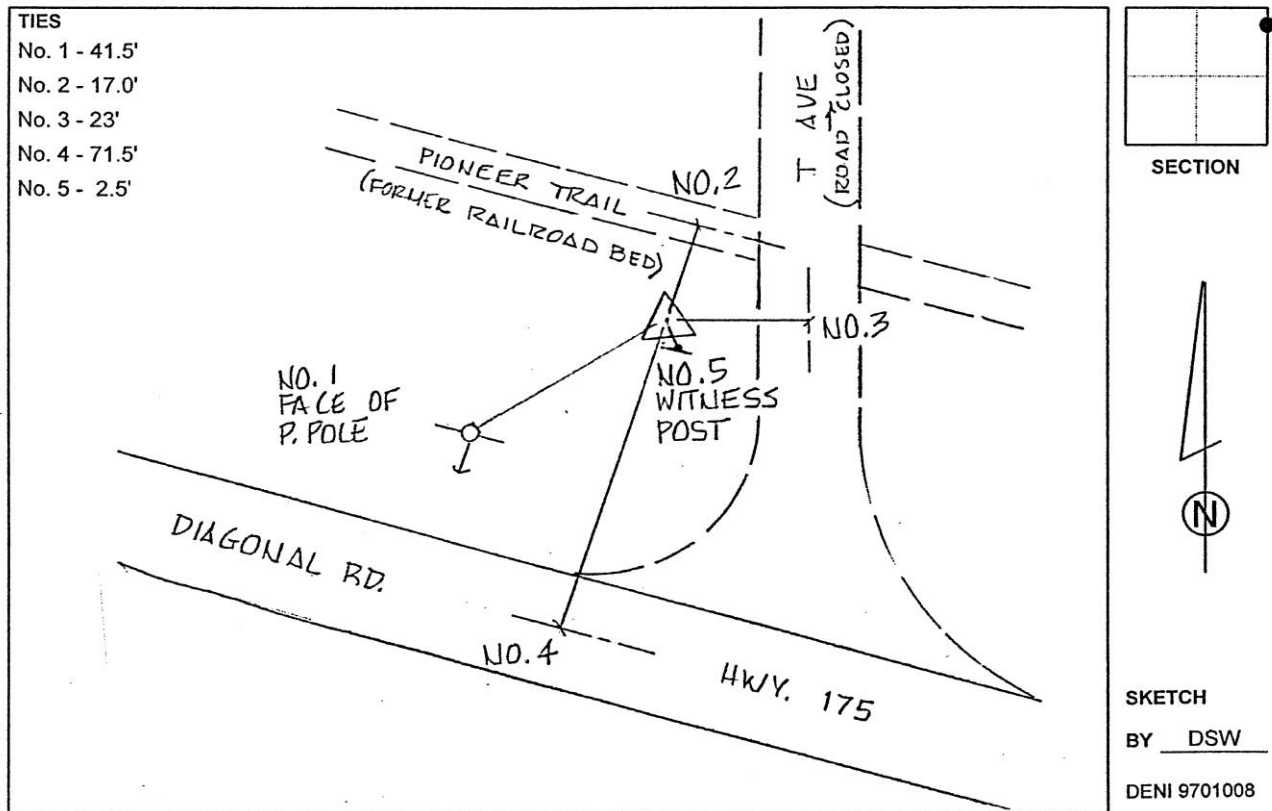
**Designation:** Grundy Co 7059 (Set by Deni Associates in 1997)

NAD 83(NA2011) Latitude: **N42°20'20.51922"** Longitude: **W92°39'04.69048"**  
 NAVD 88 Ortho Height: **940.020sft** Ellip. Ht: **835.622sft** **Geoid12B**

**Iowa North Zone (1401)** Northing: **3587747.163sft** Easting: **5150701.212sft**  
 Mapping Angle: **0°34'31"** Combination Scale Factor: **0.9999217830**

**IaRCS Zone 5** Northing: **8786923.111sft** Easting: **15391494.313sft**  
 Mapping Angle: **-0°16'19"** Combination Scale Factor: **1.0000067048**

**Monument Type:** 3-1/4" aluminum disk set in the top of a 12" dia. poured-in-place concrete monument.



*This document was prepared by Dan Corbin, Inc. on March 11<sup>th</sup>, 2019 for Grundy County, Iowa.*