

Grundy County, Iowa

Horizontal Datum: **NAD 83(NA2011)** - Vertical Datum: **NAVD 1988**

Iowa State Plane North Zone (1401)

Iowa Regional Coordinate System, Zone 5, Waterloo LCC

US Survey Feet

09/30/18

Point Name: **7060**

Designation: Grundy Co 7060 (Set by Deni Associates in 1997)

NAD 83(NA2011) Latitude: **N42°17'49.04454"** Longitude: **W92°39'04.26760"**

NAVD 88 Ortho Height: **973.220sft** Ellip. Ht: **868.835sft** Geoid**12B**

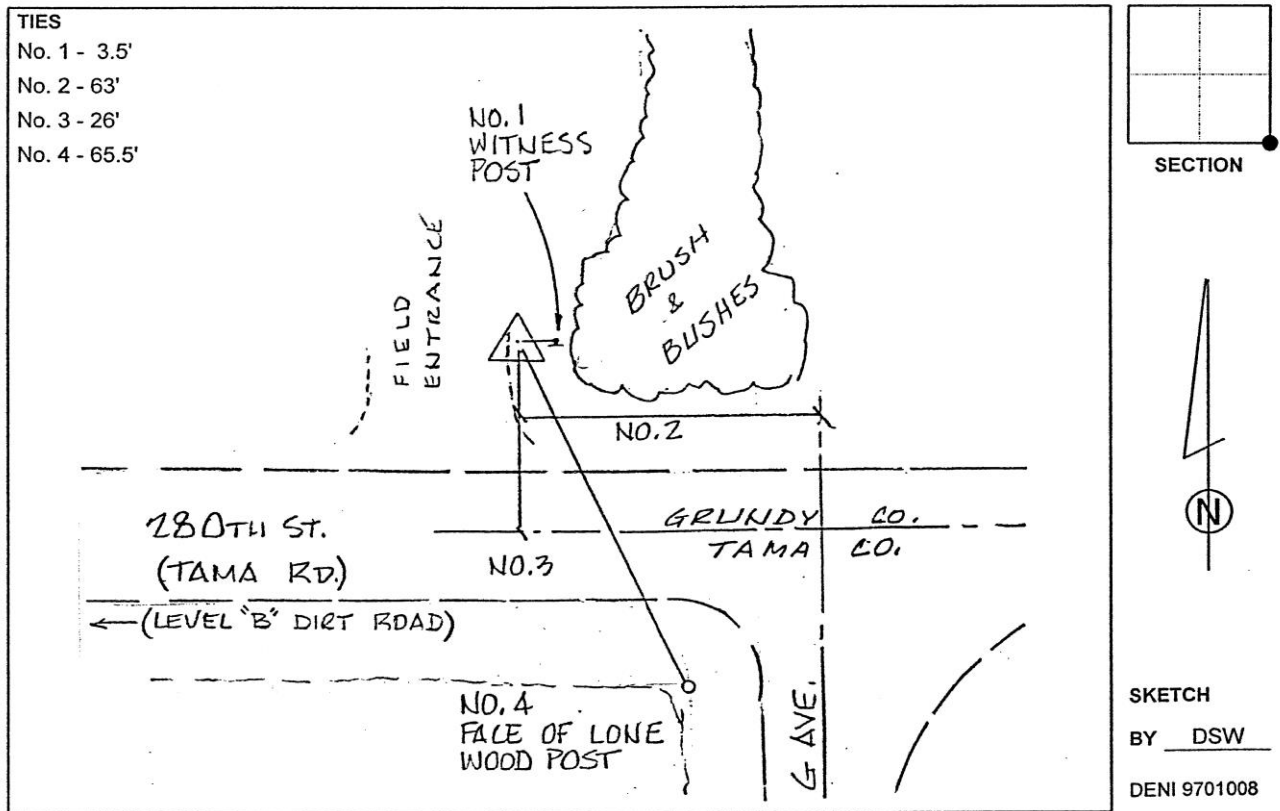
Iowa North Zone (1401) Northing: **3572414.807sft** Easting: **5150886.922sft**

Mapping Angle: **0°34'31"** Combination Scale Factor: **0.9999246476**

IaRCS Zone 5 Northing: **8771588.385sft** Easting: **15391453.326sft**

Mapping Angle: **-0°16'19"** Combination Scale Factor: **1.0000093455**

Monument Type: 3-1/4" aluminum disk set in the top of a 12" dia. poured-in-place concrete monument.



This document was prepared by Dan Corbin, Inc. on March 11th, 2019 for Grundy County, Iowa.