

Grundy County, Iowa

Horizontal Datum: **NAD 83(NA2011)** - Vertical Datum: **NAVD 1988**

Iowa State Plane North Zone (1401)

Iowa Regional Coordinate System, Zone 5, Waterloo LCC

US Survey Feet

09/30/18

Point Name: **7061**

Designation: Grundy Co 7061 (Set by Deni Associates in 1997)

NAD 83(NA2011) Latitude: **N42°17'54.12464"** Longitude: **W92°35'25.06070"**

NAVD 88 Ortho Height: **1013.170sft** Ellip. Ht: **909.086sft** Geoid**12B**

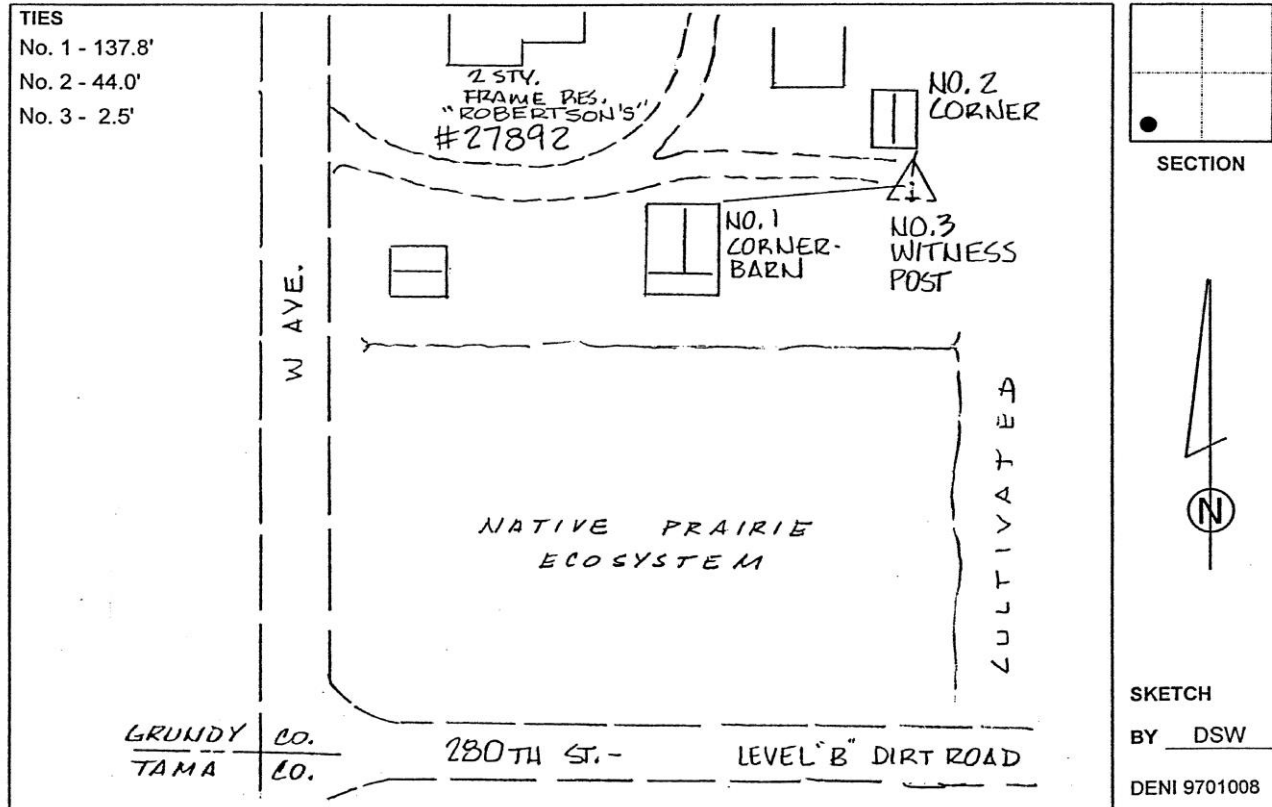
Iowa North Zone (1401) Northing: **3573100.357sft** Easting: **5167354.074sft**

Mapping Angle: **0°37'00"** Combination Scale Factor: **0.9999225657**

IaRCS Zone 5 Northing: **8772030.446sft** Easting: **15407930.209sft**

Mapping Angle: **-0°13'50"** Combination Scale Factor: **1.0000072710**

Monument Type: 3-1/4" aluminum disk set in the top of a 12" dia. poured-in-place concrete monument.



This document was prepared by Dan Corbin, Inc. on March 11th, 2019 for Grundy County, Iowa.