

Grundy County, Iowa
 Horizontal Datum: **NAD 83(NA2011)** - Vertical Datum: **NAVD 1988**
 Iowa State Plane North Zone (1401)
 Iowa Regional Coordinate System, Zone 5, Waterloo LCC
 US Survey Feet
09/30/18

Point Name: **7064**

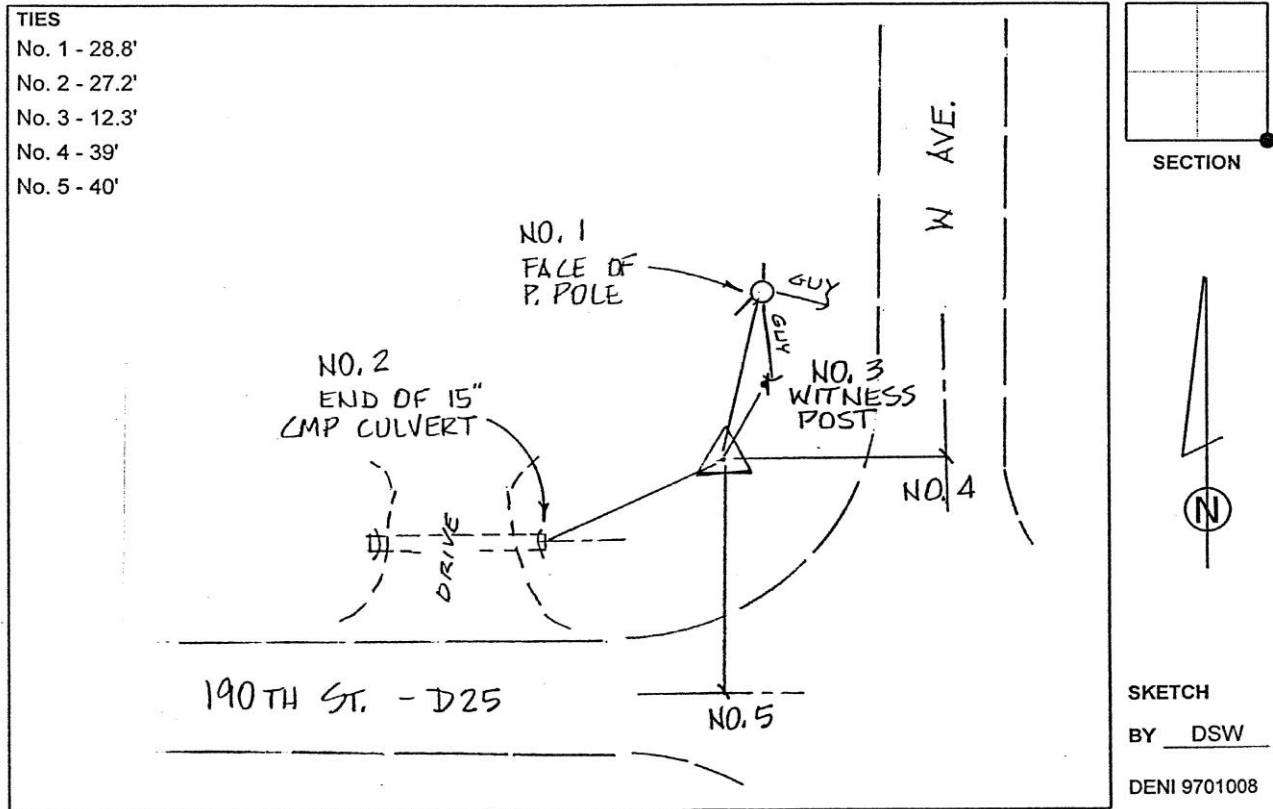
Designation: Grundy Co 7064 (Set by Deni Associates in 1997)

NAD 83(NA2011) Latitude: **N42°25'40.18769"** Longitude: **W92°35'33.72687"**
 NAVD 88 Ortho Height: **970.650sft** Ellip. Ht: **866.595sft** **Geoid12B**

Iowa North Zone (1401) Northing: **3620269.345sft** Easting: **5166196.529sft**
 Mapping Angle: **0°36'54"** Combination Scale Factor: **0.9999126616**

IaRCS Zone 5 Northing: **8819215.405sft** Easting: **15407470.108sft**
 Mapping Angle: **-0°13'56"** Combination Scale Factor: **0.9999980561**

Monument Type: 3-1/4" aluminum disk set in the top of a 12" dia. poured-in-place concrete monument.



This document was prepared by Dan Corbin, Inc. on March 11th, 2019 for Grundy County, Iowa.