

Grundy County, Iowa
 Horizontal Datum: **NAD 83(NA2011)** - Vertical Datum: **NAVD 1988**
 Iowa State Plane North Zone (1401)
 Iowa Regional Coordinate System, Zone 5, Waterloo LCC
 US Survey Feet
09/30/18

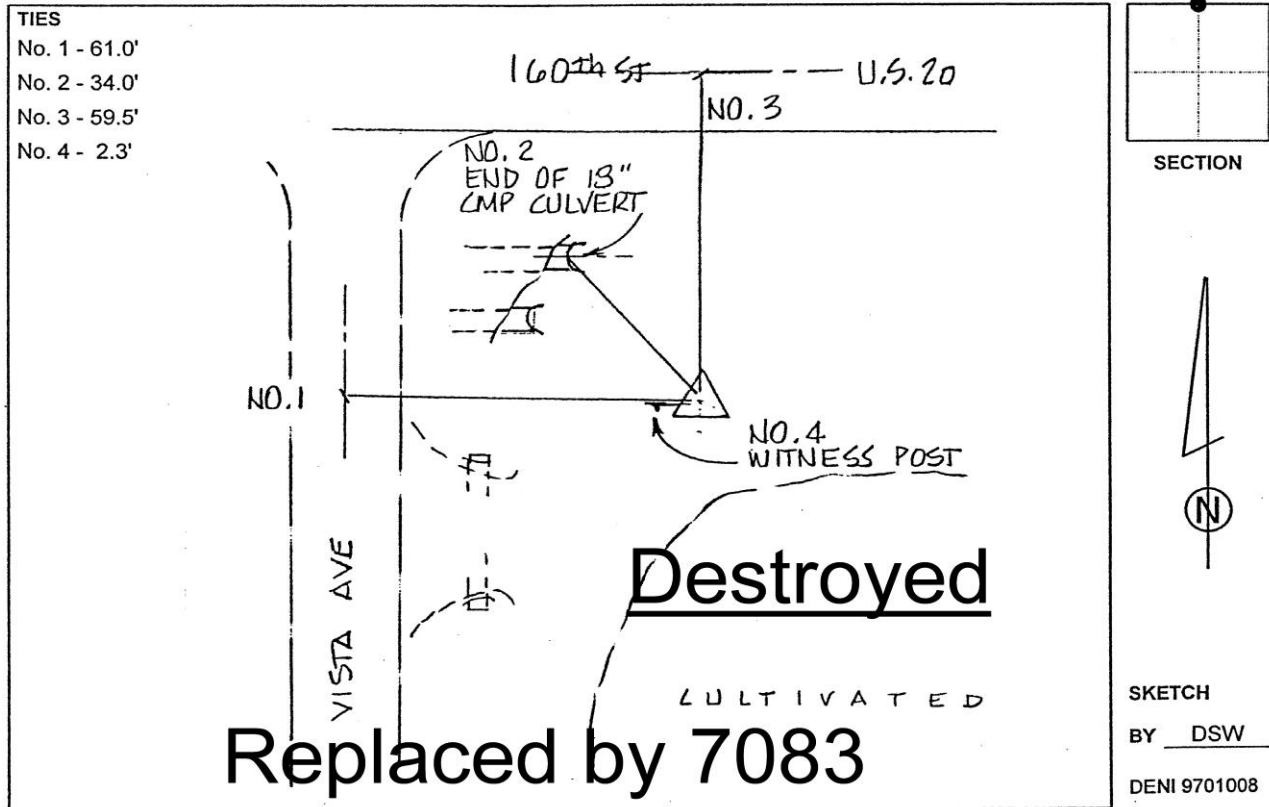
Point Name: **7065 (Destroyed)**

Designation: Grundy Co 7065 (Set by Deni Associates in 1997)

NAD 83(1996) Latitude: ~~42 28 10.15645N~~ Longitude: ~~92 36 07.95120W~~
 NAVD 88 Ortho Height: **971.040sft** Ellip. Ht: **867.068sft**

Iowa North Zone (1401) Northing: **3635422.270sft** Easting: **5163468.830sft**
 Mapping Angle: **0 36 30.5** Combination Scale Factor: **0.9999513200**

Monument Type: 3-1/4" aluminum disk set in the top of a 12" dia. poured-in-place concrete monument.



This document was prepared by Dan Corbin, Inc. on March 11th, 2019 for Grundy County, Iowa.