

Grundy County, Iowa
Horizontal Datum: **NAD 83(NA2011)** - Vertical Datum: **NAVD 1988**
Iowa State Plane North Zone (1401)
Iowa Regional Coordinate System, Zone 5, Waterloo LCC
US Survey Feet
09/30/18

Point Name: **7066**

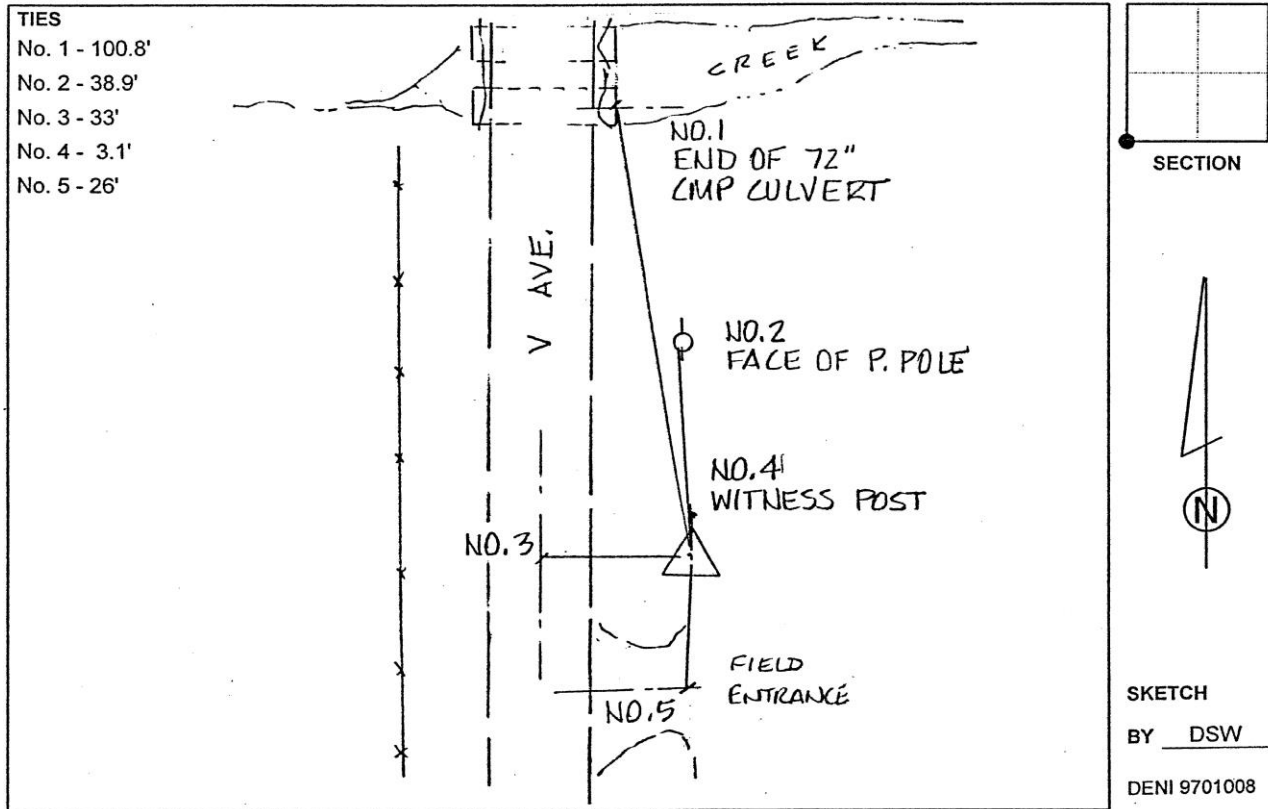
Designation: Grundy Co 7066 (Set by Deni Associates in 1997)

NAD 83(NA2011) Latitude: **N42°30'50.93602"** Longitude: **W92°36'47.84024"**
NAVD 88 Ortho Height: **958.370sft** Ellip. Ht: **854.288sft** **Geoid12B**

Iowa North Zone (1401) Northing: **3651665.455sft** Easting: **5160308.838sft**
Mapping Angle: **0°36'03"** Combination Scale Factor: **0.9999081069**

IaRCS Zone 5 Northing: **8850697.824sft** Easting: **15402046.762sft**
Mapping Angle: **-0°14'46"** Combination Scale Factor: **0.9999939619**

Monument Type: 3-1/4" aluminum disk set in the top of a 12" dia. poured-in-place concrete monument.



This document was prepared by Dan Corbin, Inc. on March 11th, 2019 for Grundy County, Iowa.