

**Grundy County, Iowa**

Horizontal Datum: **NAD 83(NA2011)** - Vertical Datum: **NAVD 1988**

Iowa State Plane North Zone (1401)

Iowa Regional Coordinate System, Zone 5, Waterloo LCC

US Survey Feet

**09/30/18**

Point Name: **7067**

**Designation:** Grundy Co 7067 (Set by Deni Associates in 1997)

NAD 83(NA2011) Latitude: **N42°33'21.11185"** Longitude: **W92°36'51.79257"**

NAVD 88 Ortho Height: **904.790sft** Ellip. Ht: **800.681sft** **Geoid12B**

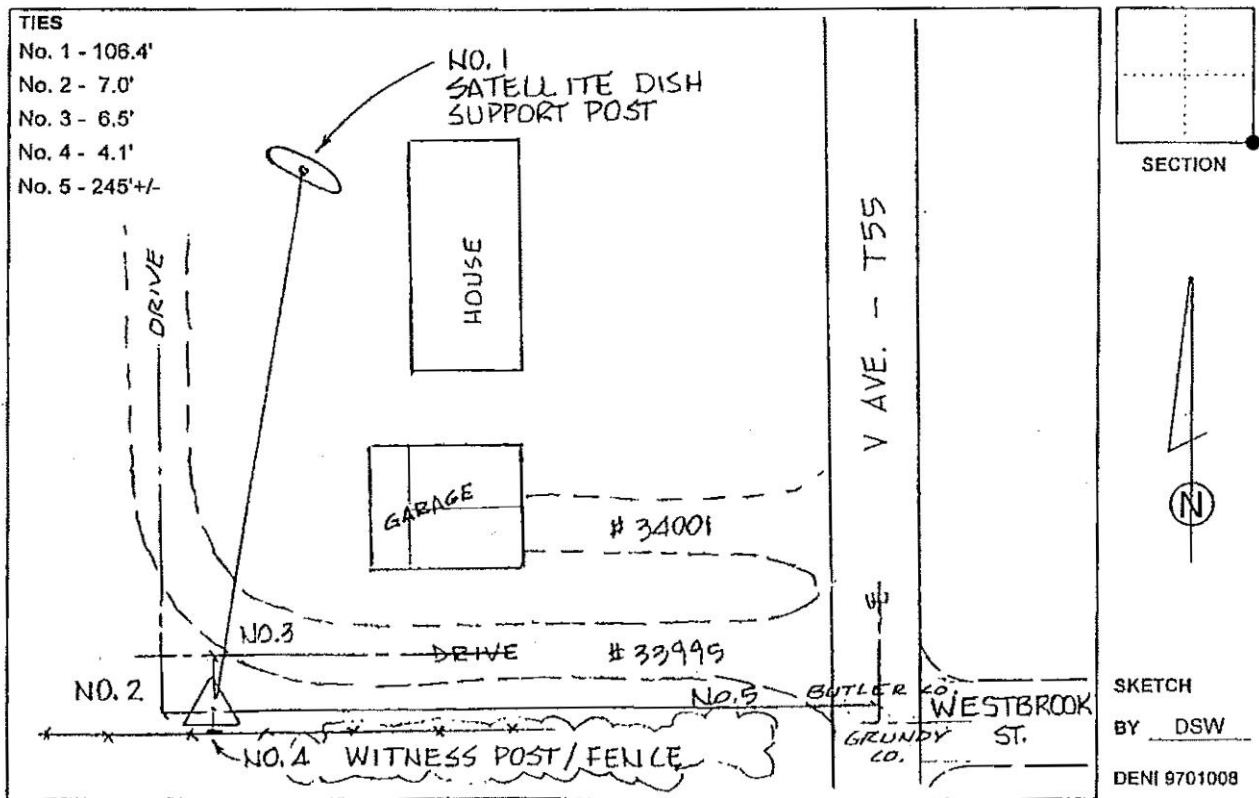
**Iowa North Zone (1401)** Northing: **3666863.823sft** Easting: **5159853.608sft**

Mapping Angle: **0°36'01"** Combination Scale Factor: **0.9999089919**

**IaRCS Zone 5** Northing: **8865902.568sft** Easting: **15401816.256sft**

Mapping Angle: **-0°14'49"** Combination Scale Factor: **0.9999950699**

**Monument Type:** 3-1/4" aluminum disk set in the top of a 12" dia. poured-in-place concrete monument.



*This document was prepared by Dan Corbin, Inc. on March 11<sup>th</sup>, 2019 for Grundy County, Iowa.*