

**Grundy County, Iowa**  
 Horizontal Datum: **NAD 83(NA2011)** - Vertical Datum: **NAVD 1988**  
 Iowa State Plane North Zone (1401)  
 Iowa Regional Coordinate System, Zone 5, Waterloo LCC  
 US Survey Feet  
**09/30/18**

Point Name: **7071**

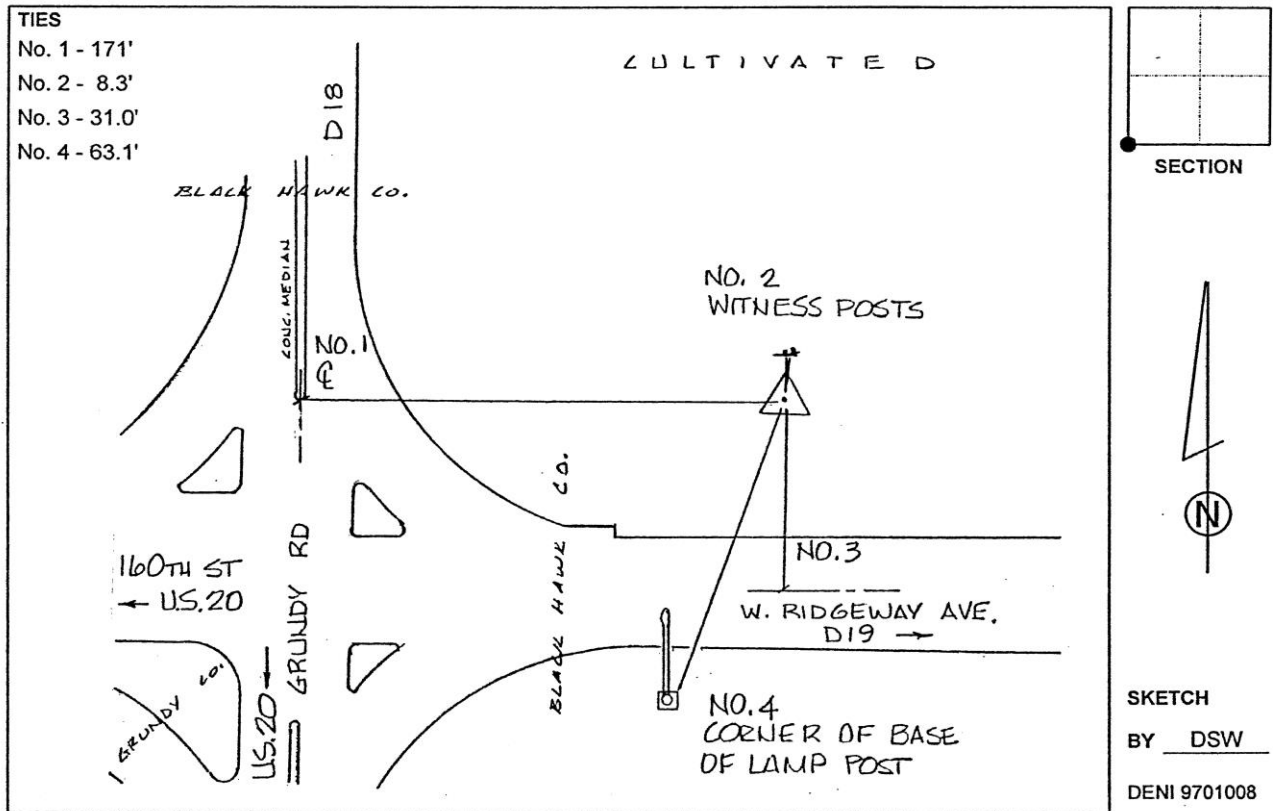
**Designation:** Black Hawk Co. GPS Control Pt. 94-006 (Set by ASI in 1994)

NAD 83(NA2011) Latitude: **N42°28'10.89923"** Longitude: **W92°32'00.12282"**  
 NAVD 88 Ortho Height: **1012.480sft** Ellip. Ht: **908.701sft** **Geoid12B**

**Iowa North Zone (1401)** Northing: **3635702.261sft** Easting: **5182040.150sft**  
 Mapping Angle: **0°39'18"** Combination Scale Factor: **0.9999078733**

**IaRCS Zone 5** Northing: **8834413.696sft** Easting: **15423541.536sft**  
 Mapping Angle: **-0°11'31"** Combination Scale Factor: **0.9999934908**

**Monument Type:** 2-1/2" dia. Black Hawk County aluminum cap on 5/8" aluminum rod in 5" PVC pipe casing with aluminum access cover.



*This document was prepared by Dan Corbin, Inc. on March 11<sup>th</sup>, 2019 for Grundy County, Iowa.*