

Grundy County, Iowa
 Horizontal Datum: **NAD 83(NA2011)** - Vertical Datum: **NAVD 1988**
 Iowa State Plane North Zone (1401)
 Iowa Regional Coordinate System, Zone 5, Waterloo LCC
 US Survey Feet
09/30/18

Point Name: **7072**

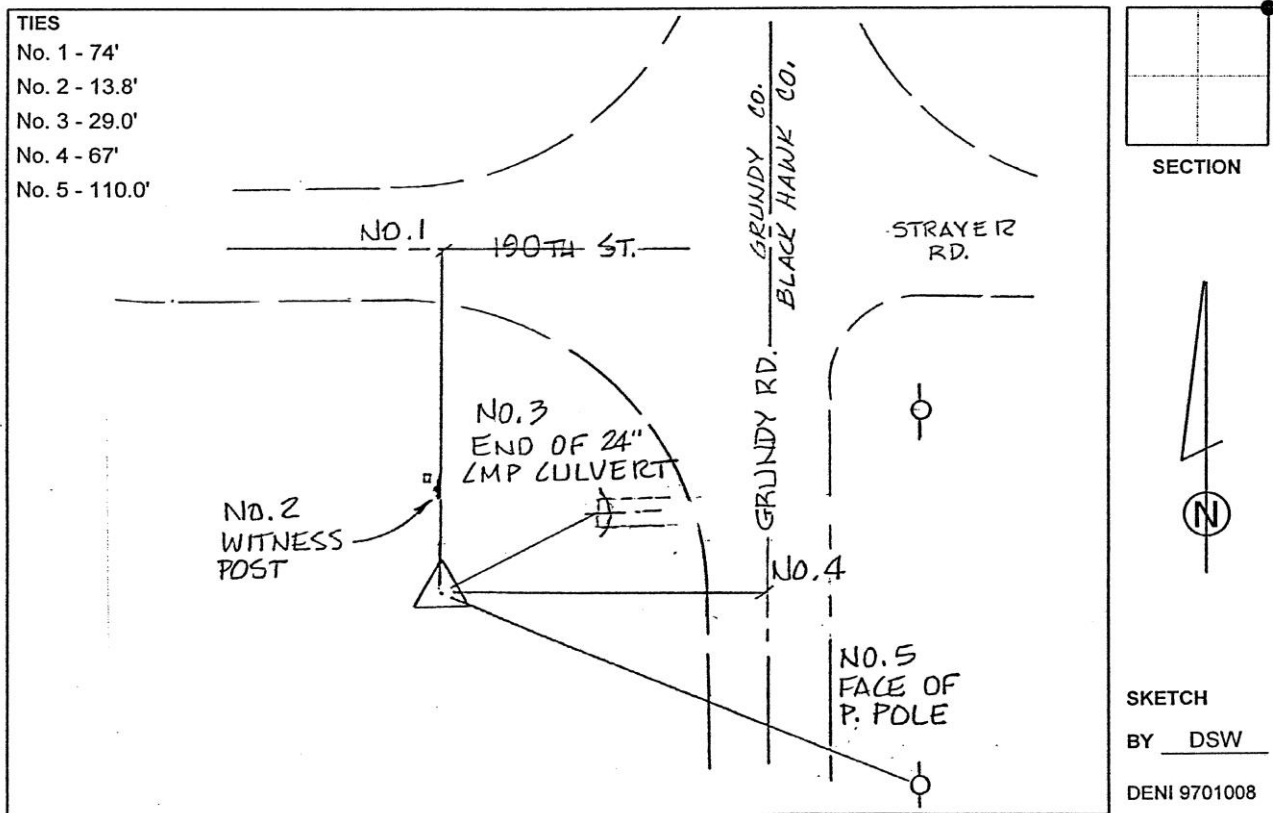
Designation: Grundy Co 7072 (Set by Deni Associates in 1997)

NAD 83(NA2011) Latitude: **N42°25'39.34750"** Longitude: **W92°32'03.10481"**
 NAVD 88 Ortho Height: **949.650sft** Ellip. Ht: **845.884sft** **Geoid12B**

Iowa North Zone (1401) Northing: **3620359.282sft** Easting: **5181991.944sft**
 Mapping Angle: **0°39'16"** Combination Scale Factor: **0.9999136685**

IaRCS Zone 5 Northing: **8819071.796sft** Easting: **15423266.476sft**
 Mapping Angle: **-0°11'33"** Combination Scale Factor: **0.9999990618**

Monument Type: 3-1/4" aluminum disk set in the top of a 12" dia. poured-in-place concrete monument.



This document was prepared by Dan Corbin, Inc. on March 11th, 2019 for Grundy County, Iowa.