

Grundy County, Iowa

Horizontal Datum: **NAD 83(NA2011)** - Vertical Datum: **NAVD 1988**

Iowa State Plane North Zone (1401)

Iowa Regional Coordinate System, Zone 5, Waterloo LCC

US Survey Feet

09/30/18

Point Name: **7076**

Designation: Grundy Co 7076 (Set by Deni Associates in 1997)

NAD 83(NA2011) Latitude: **N42°21'52.87290"** Longitude: **W92°45'34.08600"**

NAVD 88 Ortho Height: **986.690sft** Ellip. Ht: **882.000sft** Geoid**12B**

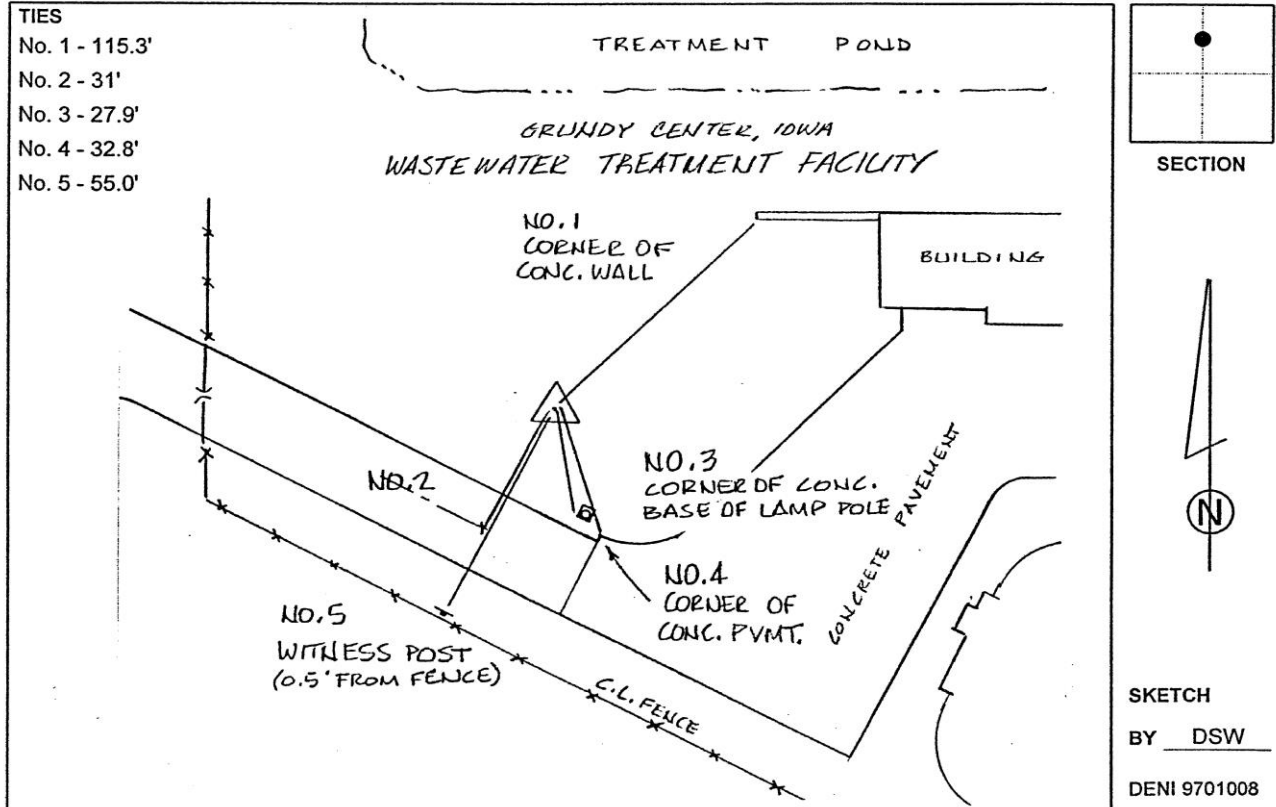
Iowa North Zone (1401) Northing: **3596820.716sft** Easting: **5121376.843sft**

Mapping Angle: **0°30'07"** Combination Scale Factor: **0.9999171141**

IaRCS Zone 5 Northing: **8796430.005sft** Easting: **15362304.809sft**

Mapping Angle: **-0°20'43"** Combination Scale Factor: **1.0000021722**

Monument Type: 3-1/4" aluminum disk set in the top of a 12" dia. poured-in-place concrete monument.



This document was prepared by Dan Corbin, Inc. on March 11th, 2019 for Grundy County, Iowa.