

Grundy County, Iowa
 Horizontal Datum: **NAD 83(NA2011)** - Vertical Datum: **NAVD 1988**
 Iowa State Plane North Zone (1401)
 Iowa Regional Coordinate System, Zone 5, Waterloo LCC
 US Survey Feet
09/30/18

Point Name: **7077**

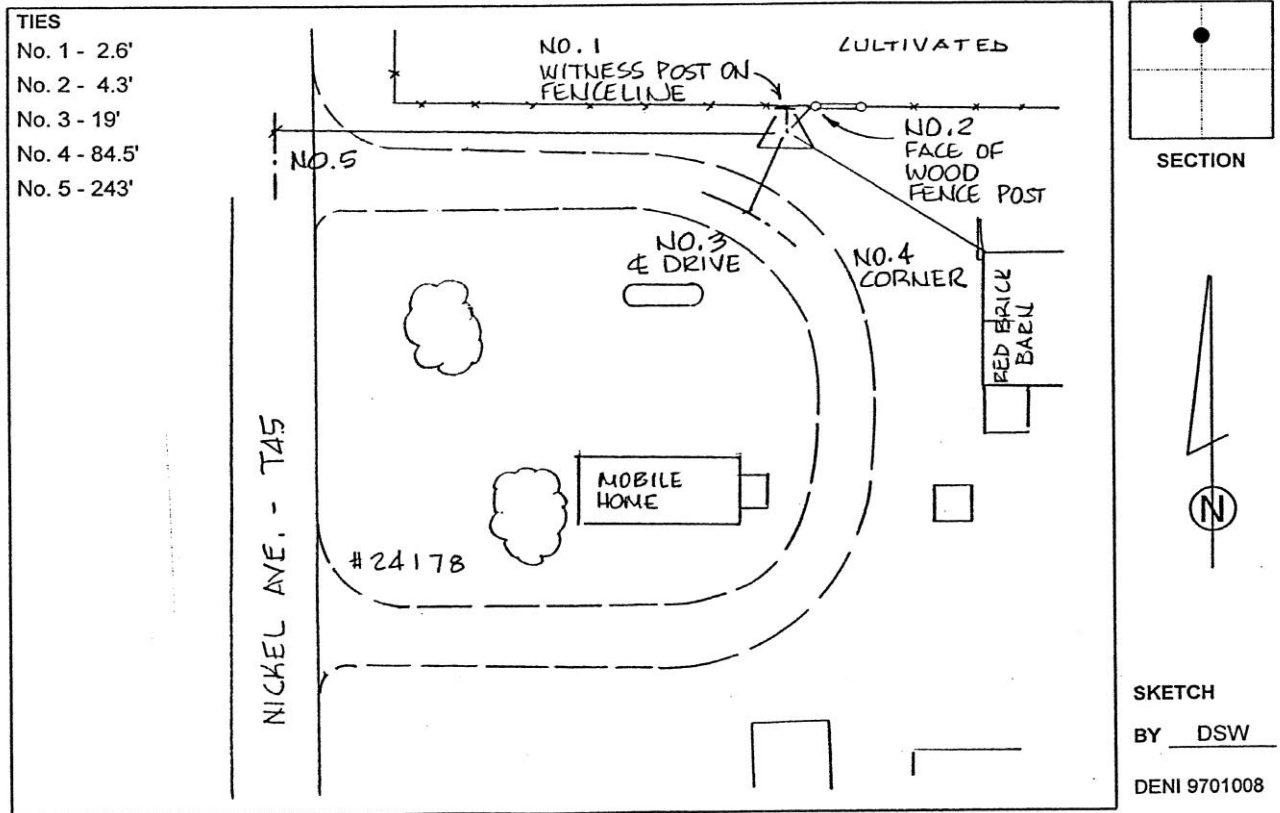
Designation: Grundy Co 7077 (Set by Deni Associates in 1997)

NAD 83(NA2011) Latitude: **N42°21'06.59643"** Longitude: **W92°45'27.82739"**
 NAVD 88 Ortho Height: **1006.814sft** Ellip. Ht: **902.131sft** **Geoid12B**

Iowa North Zone (1401) Northing: **3592140.538sft** Easting: **5121887.787sft**
 Mapping Angle: **0°30'11"** Combination Scale Factor: **0.9999173558**

IaRCS Zone 5 Northing: **8791742.387sft** Easting: **15362746.546sft**
 Mapping Angle: **-0°20'38"** Combination Scale Factor: **1.0000023454**

Monument Type: 3-1/4" aluminum disk set in the top of a 12" dia. poured-in-place concrete monument.



This document was prepared by Dan Corbin, Inc. on March 11th, 2019 for Grundy County, Iowa.