

Grundy County, Iowa
 Horizontal Datum: **NAD 83(NA2011)** - Vertical Datum: **NAVD 1988**
 Iowa State Plane North Zone (1401)
 Iowa Regional Coordinate System, Zone 5, Waterloo LCC
 US Survey Feet
09/30/18

Point Name: **7078**

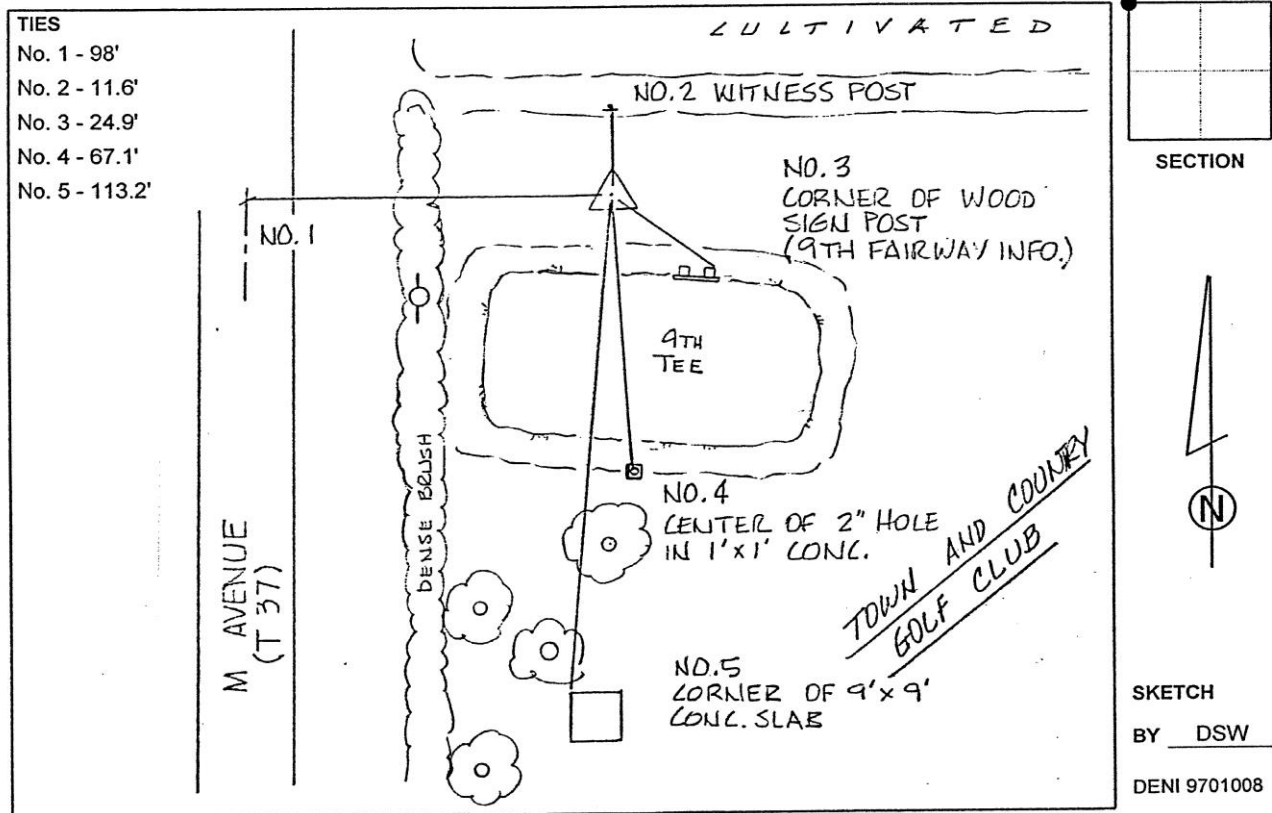
Designation: Grundy Co 7078 (Set by Deni Associates in 1997)

NAD 83(NA2011) Latitude: **N42°21'15.58966"** Longitude: **W92°47'14.38684"**
 NAVD 88 Ortho Height: **1020.560sft** Ellip. Ht: **915.848sft** **Geoid12B**

Iowa North Zone (1401) Northing: **3592982.024sft** Easting: **5113879.381sft**
 Mapping Angle: **0°28'59"** Combination Scale Factor: **0.9999164623**

laRCS Zone 5 Northing: **8792702.254sft** Easting: **15354750.775sft**
 Mapping Angle: **-0°21'51"** Combination Scale Factor: **1.0000014651**

Monument Type: 3-1/4" aluminum disk set in the top of a 12" dia. poured-in-place concrete monument.



This document was prepared by Dan Corbin, Inc. on March 11th, 2019 for Grundy County, Iowa.