

**Grundy County, Iowa**  
Horizontal Datum: **NAD 83(NA2011)** - Vertical Datum: **NAVD 1988**  
Iowa State Plane North Zone (1401)  
Iowa Regional Coordinate System, Zone 5, Waterloo LCC  
US Survey Feet  
**09/30/18**

Point Name: **7079**

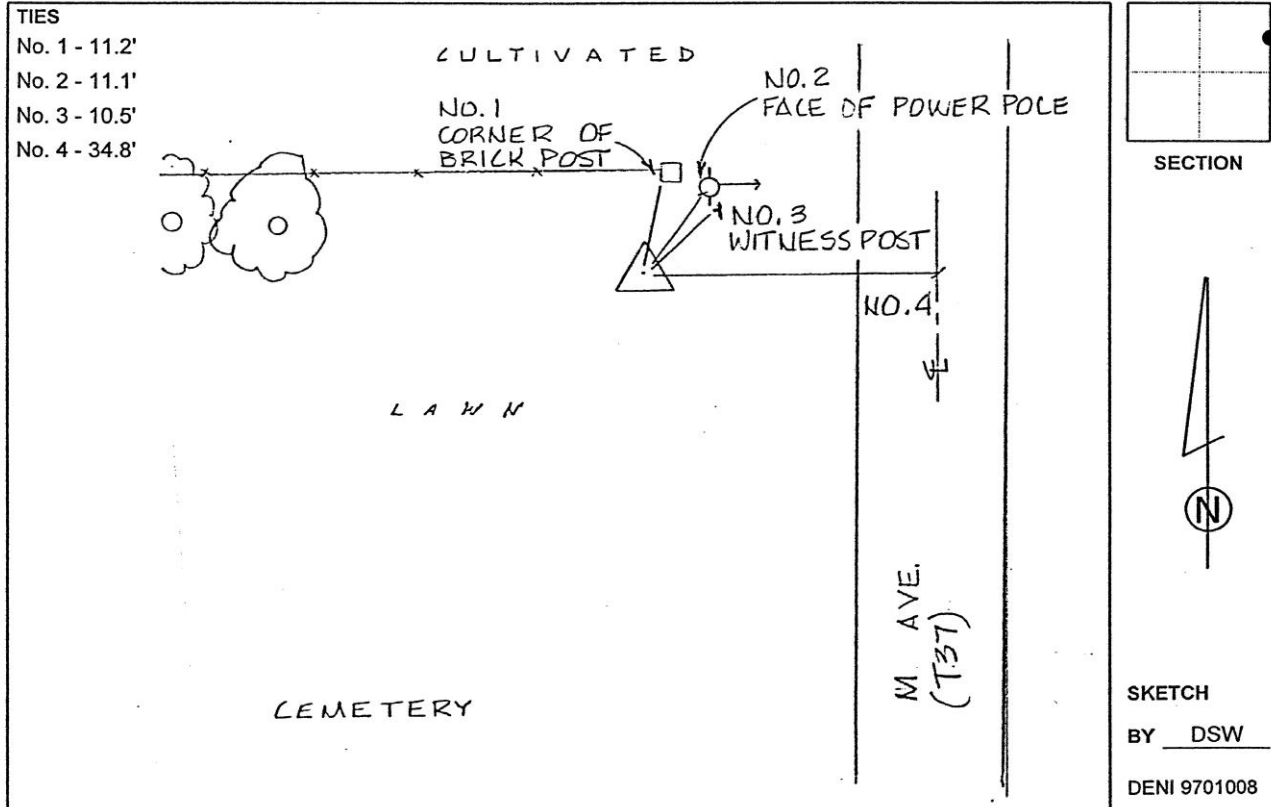
**Designation:** Grundy Co 7079 (Set by Deni Associates in 1997)

NAD 83(NA2011) Latitude: **N42°21'59.19837"** Longitude: **W92°47'16.49857"**  
NAVD 88 Ortho Height: **1019.130sft** Ellip. Ht: **914.414sft** **Geoid12B**

**Iowa North Zone (1401)** Northing: **3597394.959sft** Easting: **5113683.651sft**  
Mapping Angle: **0°28'57"** Combination Scale Factor: **0.9999154041**

**IaRCS Zone 5** Northing: **8797117.976sft** Easting: **15354620.294sft**  
Mapping Angle: **-0°21'52"** Combination Scale Factor: **1.0000004714**

**Monument Type:** 3-1/4" aluminum disk set in the top of a 12" dia. poured-in-place concrete monument.



*This document was prepared by Dan Corbin, Inc. on March 11<sup>th</sup>, 2019 for Grundy County, Iowa.*