

**Grundy County, Iowa**  
Horizontal Datum: **NAD 83(NA2011)** - Vertical Datum: **NAVD 1988**  
Iowa State Plane North Zone (1401)  
Iowa Regional Coordinate System, Zone 5, Waterloo LCC  
US Survey Feet  
**09/30/18**

Point Name: **7082**

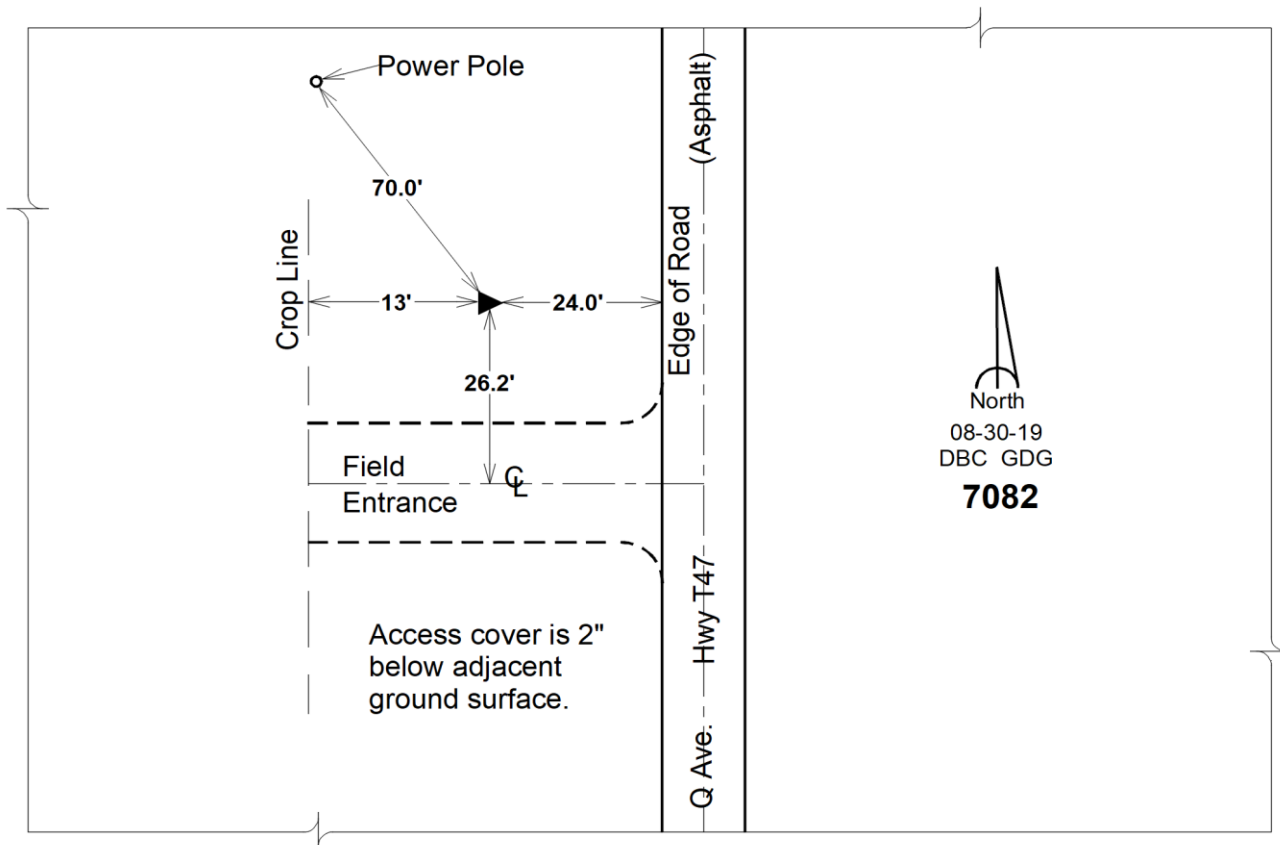
**Designation:** Grundy Co 7082 (Set by DCI in 2018)

NAD 83(NA2011) Latitude: **N42°20'31.92325"** Longitude: **W92°42'35.71052"**  
NAVD 88 Ortho Height: **988.445sft** Ellip. Ht: **883.851sft** **Geoid12B**

**Iowa North Zone (1401)** Northing: **3588747.918sft** Easting: **5134843.471sft**  
Mapping Angle: **0°32'08"** Combination Scale Factor: **0.9999191642**

**IaRCS Zone 5** Northing: **8788158.300sft** Easting: **15375651.755sft**  
Mapping Angle: **-0°18'42"** Combination Scale Factor: **1.0000041027**

**Monument Type:** Berntsen "Top Security" aluminum rod monument with a 2-1/2" dia. survey cap and permanent magnet encased in a white PVC pipe with a NGS style aluminum access cover.



*This document was prepared by Dan Corbin, Inc. on March 11<sup>th</sup>, 2019 for Grundy County, Iowa.*