

**Grundy County, Iowa**  
 Horizontal Datum: **NAD 83(NA2011)** - Vertical Datum: **NAVD 1988**  
 Iowa State Plane North Zone (1401)  
 Iowa Regional Coordinate System, Zone 5, Waterloo LCC  
 US Survey Feet  
**09/30/18**

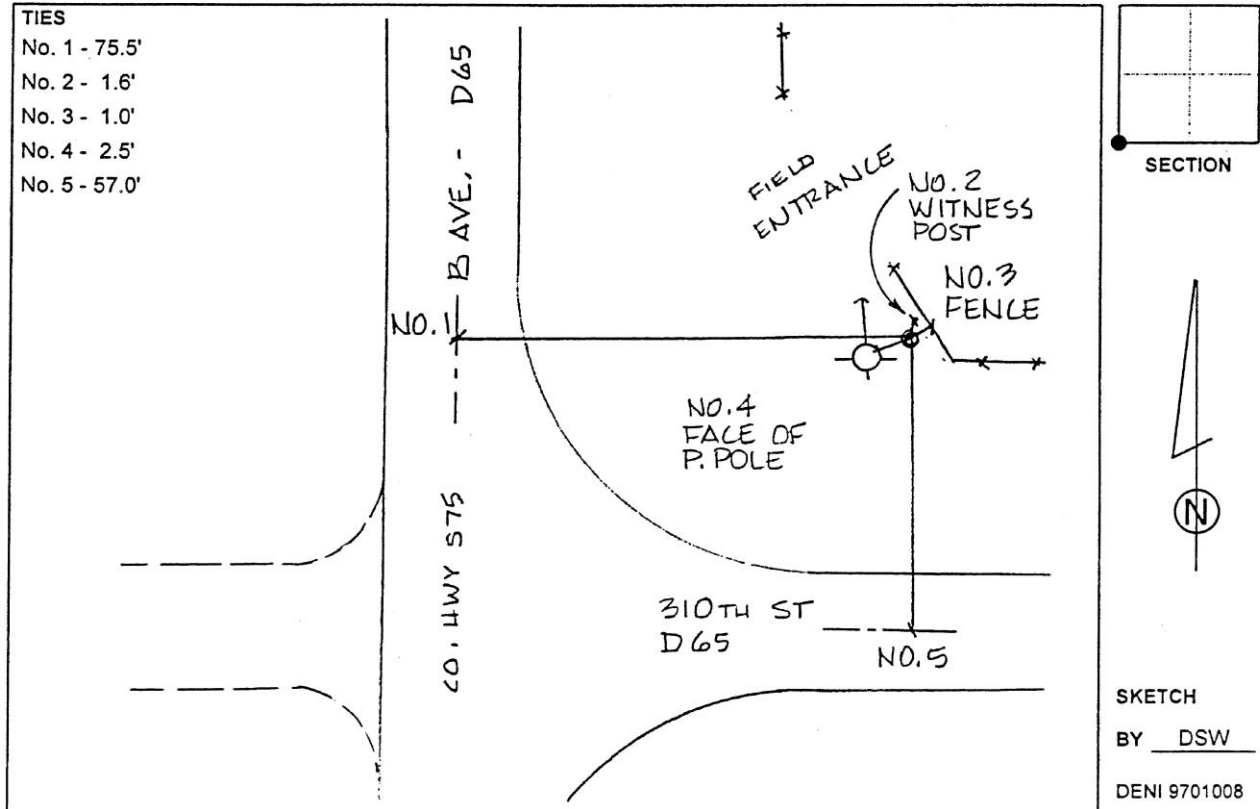
Point Name: **9709**  
 Designation: USGS: 16 LAP

NAD 83(NA2011) Latitude: **N42°15'10.16990"** Longitude: **W93°00'05.71892"**  
 NAVD 88 Ortho Height: **1032.540sft** Ellip. Ht: **928.740sft** Geoid12B

**Iowa North Zone (1401)** Northing: **3555577.243sft** Easting: **5056185.720sft**  
 Mapping Angle: **0°20'16"** Combination Scale Factor: **0.9999270277**

**IaRCS Zone 5** Northing: **8756151.349sft** Easting: **15296505.529sft**  
 Mapping Angle: **-0°30'33"** Combination Scale Factor: **1.0000114909**

**Monument Type:** Standard USGS disk on copper rod in concrete pipe sleeve, Sleeve projects 3" above ground.



*This document was prepared by Dan Corbin, Inc. on March 11<sup>th</sup>, 2019 for Grundy County, Iowa.*