

Grundy County, Iowa

Horizontal Datum: **NAD 83(NA2011)** - Vertical Datum: **NAVD 1988**

Iowa State Plane North Zone (1401)

Iowa Regional Coordinate System, Zone 5, Waterloo LCC

US Survey Feet

09/30/18

Point Name: **9797**

Designation: USGS: 13 LAP

NAD 83(NA2011) Latitude: **N42°21'14.89264"** Longitude: **W93°00'09.21524"**

NAVD 88 Ortho Height: **1083.940sft** Ellip. Ht: **980.028sft** Geoid**12B**

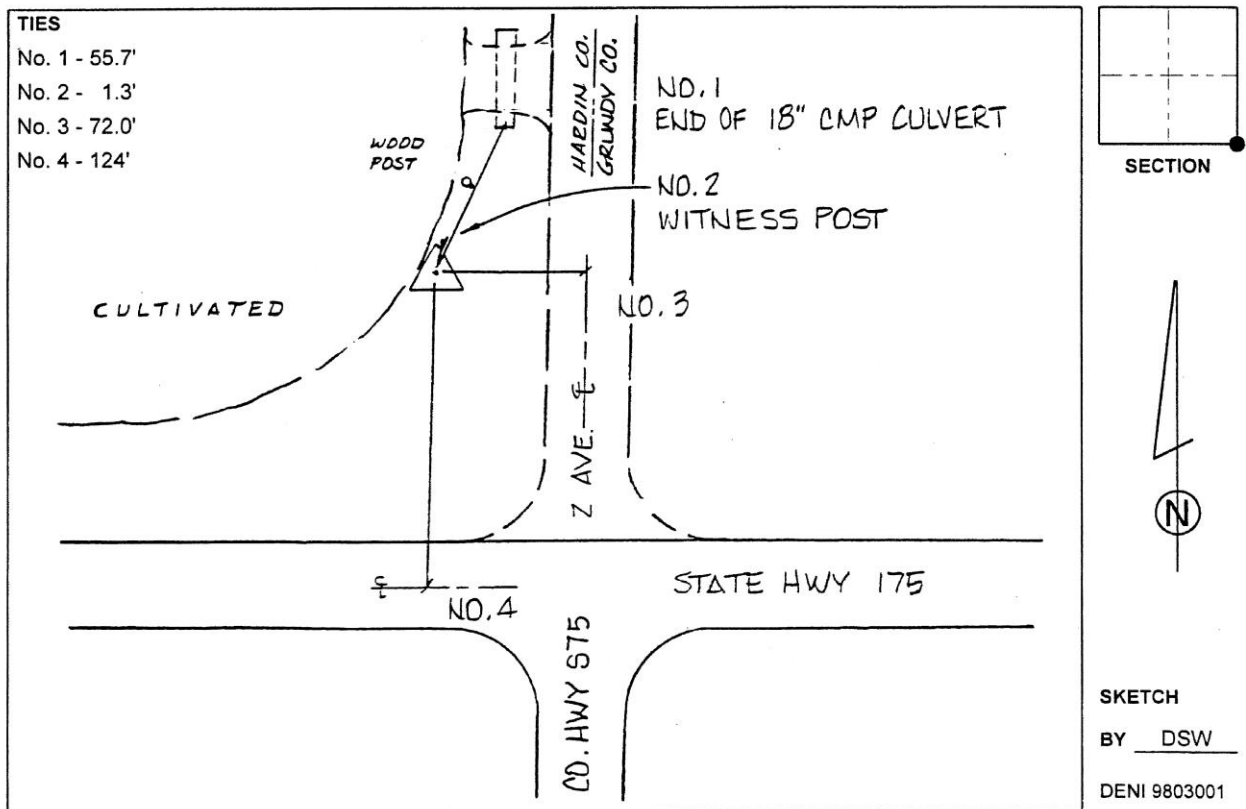
Iowa North Zone (1401) Northing: **3592495.100sft** Easting: **5055705.547sft**

Mapping Angle: **0°20'14"** Combination Scale Factor: **0.9999134130**

IaRCS Zone 5 Northing: **8793075.400sft** Easting: **15296571.155sft**

Mapping Angle: **-0°30'36"** Combination Scale Factor: **0.9999984146**

Monument Type: Standard USGS disk on rod in 6" diameter concrete tile, flush, stamped "13 LAP 1974".



This document was prepared by Dan Corbin, Inc. on March 11th, 2019 for Grundy County, Iowa.