

# GPS SURVEY MARK DESCRIPTION

GIS MAPPING BY:  
THE SIDWELL COMPANY  
WEST CHICAGO, ILLINOIS

THE OFFICE OF THE  
COUNTY ENGINEER  
GRUNDY COUNTY, IOWA

DESIGNATION 891831 3 GPS No. 7003 COUNTY GRUNDY STATE IOWA  
 LOCATED IN SECTION 31 TWP 89N RGE 18W USGS QUAD MAP STEAMBOAT ROCK  
 TO REACH FROM INTERSECTION OF 160TH STREET AND B AVENUE: GO WESTERLY 0.85 MILE TO DRIVEWAY  
TO NORTH AND MARK.

MARK 3-1/4" ALUMINUM DISK SET IN 12" DIAMETER POURED-IN-PLACE CONCRETE MONUMENT

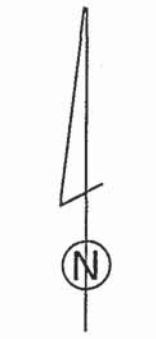
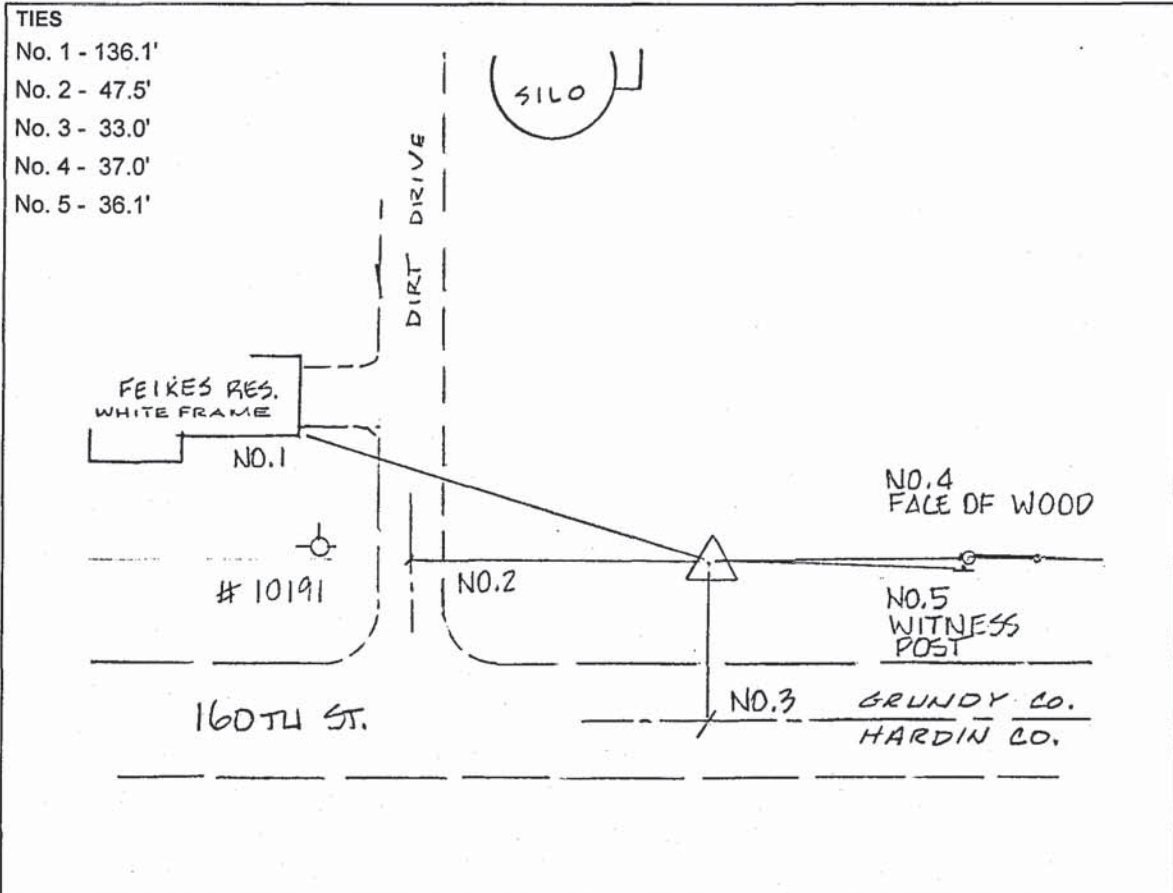
MARK EXISTING     VALUES AS PUBLISHED BY \_\_\_\_\_  
 MARK SET         VALUES ESTABLISHED BY DENI ASSOCIATES, INC. DATE JUNE 1997

HORIZONTAL VALUES ORIGINATED ON ORDER "B" IOWA HIGH ACCURACY REFERENCE NETWORK (HARN) CONTROL ESTABLISHED BY THE NATIONAL GEODETIC SURVEY AND BASED ON THE NORTH AMERICAN DATUM OF 1983, 1996 ADJUSTMENT.

IOWA COORDINATE SYSTEM, NORTH ZONE	SCALE FACTOR: <u>0.99995124</u>
COORDINATES (US FEET)	COORDINATES (METERS)
NORTHING (Y) <u>3634990.16</u>	NORTHING (Y) <u>1107947.217</u>
EASTING (X) <u>5049884.88</u>	EASTING (X) <u>1539207.989</u>

VERTICAL VALUES ORIGINATED ON VERTICAL CONTROL ESTABLISHED BY THE NATIONAL GEODETIC SURVEY AND/OR THE U.S. GEOLOGICAL SURVEY AND BASED ON THE NORTH AMERICAN VERTICAL DATUM OF 1988.

ELEVATION (US FEET) 1070.81 ELEVATION (METERS) 326.384



SKETCH  
 BY DSW  
 DENI 9701008