

# GPS SURVEY MARK DESCRIPTION

GIS MAPPING BY:  
THE SIDWELL COMPANY  
WEST CHICAGO, ILLINOIS

THE OFFICE OF THE  
COUNTY ENGINEER  
GRUNDY COUNTY, IOWA

DESIGNATION 881834 3 GPS No. 7015 COUNTY GRUNDY STATE IOWA

LOCATED IN SECTION 34 TWP 88N RGE 18W USGS QUAD MAP WELLSBURG

TO REACH FROM INTERSECTION OF 220TH STREET AND E AVENUE: GO NORTH 0.1 MILE TO SOUTHWEST  
QUADRANT OF FARM COMPLEX AND MARK.

MARK 3-1/4" ALUMINUM DISK SET IN 12" DIAMETER POURED-IN-PLACE CONCRETE MONUMENT

MARK EXISTING  VALUES AS PUBLISHED BY \_\_\_\_\_

MARK SET  VALUES ESTABLISHED BY DENI ASSOCIATES, INC. DATE JUNE 1997

HORIZONTAL VALUES ORIGINATED ON ORDER "B" IOWA HIGH ACCURACY REFERENCE NETWORK (HARN) CONTROL ESTABLISHED BY THE NATIONAL GEODETIC SURVEY AND BASED ON THE NORTH AMERICAN DATUM OF 1983, 1996 ADJUSTMENT.

IOWA COORDINATE SYSTEM, NORTH ZONE SCALE FACTOR: 0.99995743

COORDINATES (US FEET) COORDINATES (METERS)

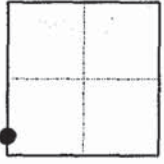
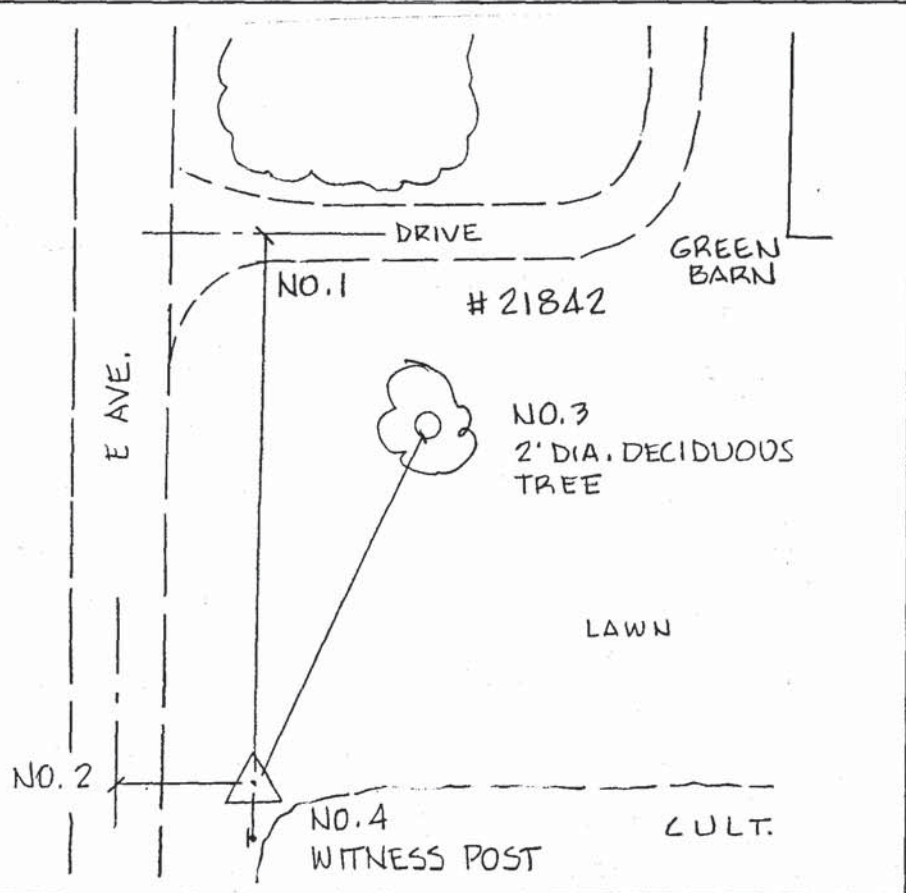
NORTHING (Y) 3604015.53 NORTHING (Y) 1098506.131

EASTING (X) 5071362.57 EASTING (X) 1545754.404

VERTICAL VALUES ORIGINATED ON VERTICAL CONTROL ESTABLISHED BY THE NATIONAL GEODETIC SURVEY AND / OR THE U.S. GEOLOGICAL SURVEY AND BASED ON THE NORTH AMERICAN VERTICAL DATUM OF 1988.

ELEVATION (US FEET) 1079.95 ELEVATION (METERS) 329.169

- TIES
- No. 1 - 123.0'
  - No. 2 - 31.5'
  - No. 3 - 102.0'
  - No. 4 - 12.0'



SECTION



SKETCH  
BY DSW

DENI 9701008