

GPS SURVEY MARK DESCRIPTION

GIS MAPPING BY:
THE SIDWELL COMPANY
WEST CHICAGO, ILLINOIS

THE OFFICE OF THE
COUNTY ENGINEER
GRUNDY COUNTY, IOWA

DESIGNATION 861836 2 GPS No. 7028 COUNTY GRUNDY STATE IOWA
 LOCATED IN SECTION 36 TWP 86N RGE 18W USGS QUAD MAP CONRAD WEST
 TO REACH FROM IN THE NORTHWEST QUADRANT OF THE INTERSECTION OF 100TH STREET AND H AVENUE
NEAR THE SOUTH LINE OF GRUNDY COUNTY.

MARK 3-1/4" ALUMINUM DISK SET IN 12" DIAMETER POURED-IN-PLACE CONCRETE MONUMENT

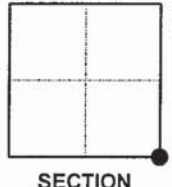
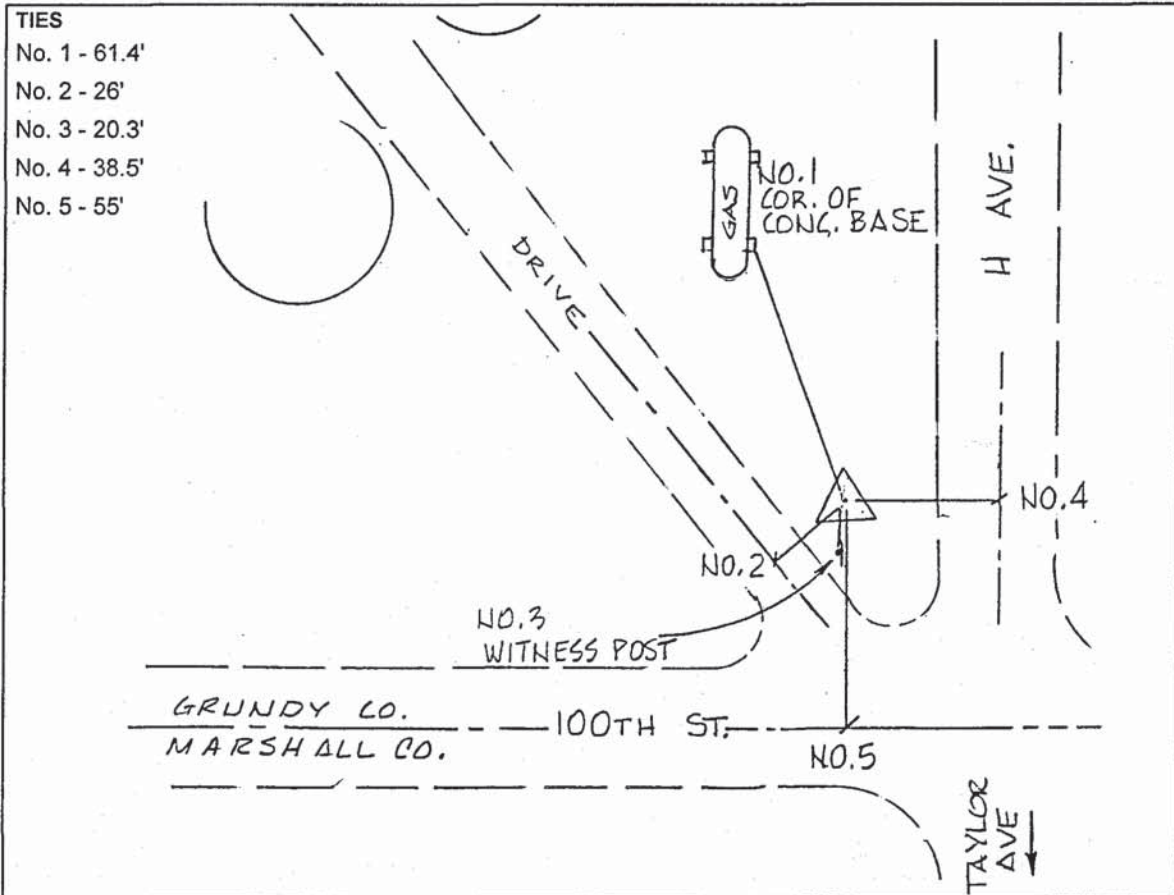
MARK EXISTING VALUES AS PUBLISHED BY _____
 MARK SET VALUES ESTABLISHED BY DENI ASSOCIATES, INC. DATE JUNE 1997

HORIZONTAL VALUES ORIGINATED ON ORDER "B" IOWA HIGH ACCURACY REFERENCE NETWORK (HARN) CONTROL ESTABLISHED BY THE NATIONAL GEODETIC SURVEY AND BASED ON THE NORTH AMERICAN DATUM OF 1983, 1996 ADJUSTMENT.

IOWA COORDINATE SYSTEM, NORTH ZONE	SCALE FACTOR: <u>0.99997705</u>
COORDINATES (US FEET)	COORDINATES (METERS)
NORTHING (Y) <u>3540234.86</u>	NORTHING (Y) <u>1079065.744</u>
EASTING (X) <u>5087822.76</u>	EASTING (X) <u>1550771.478</u>

VERTICAL VALUES ORIGINATED ON VERTICAL CONTROL ESTABLISHED BY THE NATIONAL GEODETIC SURVEY AND / OR THE U.S. GEOLOGICAL SURVEY AND BASED ON THE NORTH AMERICAN VERTICAL DATUM OF 1988.

ELEVATION (US FEET) 1054.17 ELEVATION (METERS) 321.313



SECTION



SKETCH
BY DSW
DENI 9701008