

GPS SURVEY MARK DESCRIPTION

GIS MAPPING BY:
THE SIDWELL COMPANY
WEST CHICAGO, ILLINOIS

THE OFFICE OF THE
COUNTY ENGINEER
GRUNDY COUNTY, IOWA

DESIGNATION 861701 1 GPS No. 7044 COUNTY GRUNDY STATE IOWA
 LOCATED IN SECTION 1 TWP 86N RGE 17W USGS QUAD MAP GRUNDY CENTER
 TO REACH FROM THE INTERSECTION OF 280TH STREET AND NICKEL AVENUE (T 45); GO WEST 0.5 MILE TO
NORTH - SOUTH SECTION LINE AND MARK.

MARK 3-1/4" ALUMINUM DISK SET IN 12" DIAMETER POURED-IN-PLACE CONCRETE MONUMENT

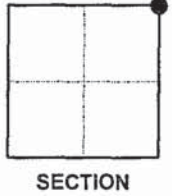
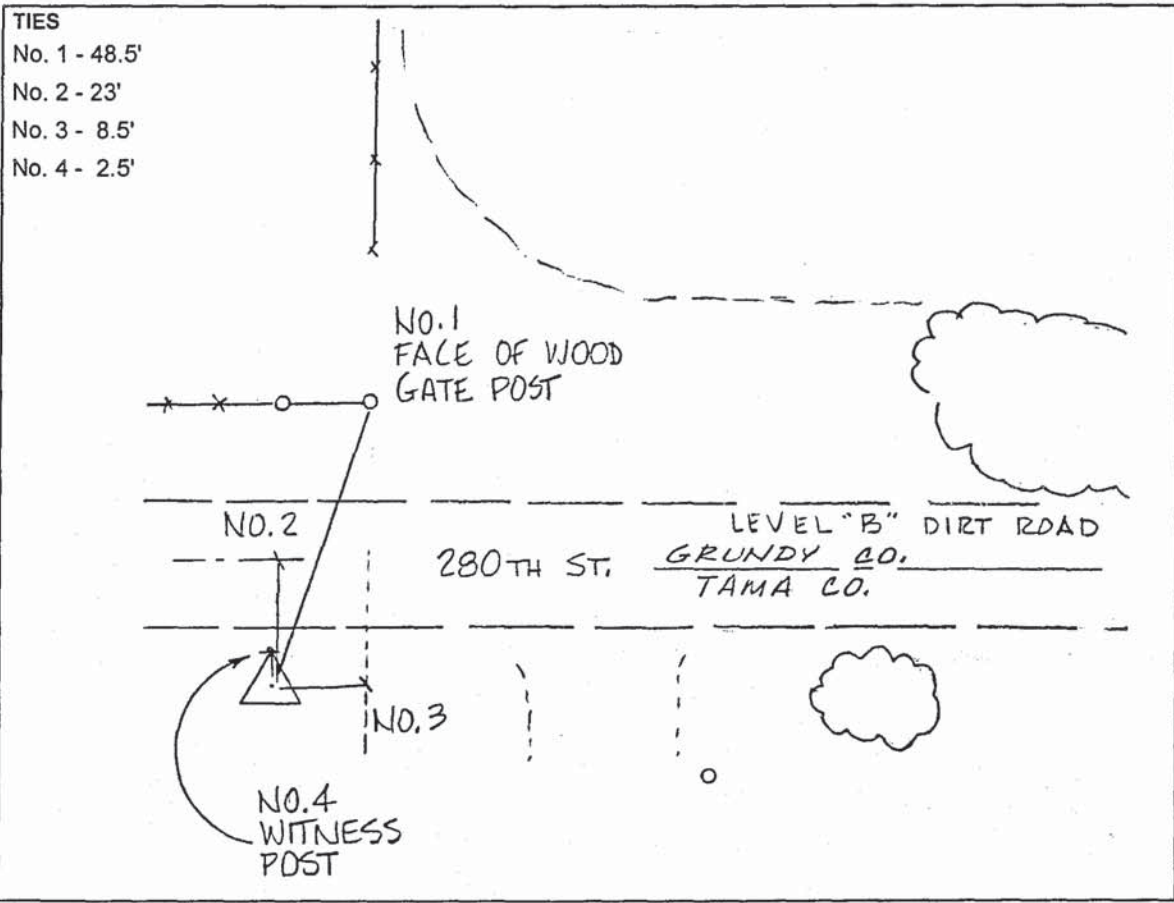
MARK EXISTING VALUES AS PUBLISHED BY _____
 MARK SET VALUES ESTABLISHED BY DENI ASSOCIATES, INC. DATE JUNE 1997

HORIZONTAL VALUES ORIGINATED ON ORDER "B" IOWA HIGH ACCURACY REFERENCE NETWORK (HARN) CONTROL ESTABLISHED BY THE NATIONAL GEODETIC SURVEY AND BASED ON THE NORTH AMERICAN DATUM OF 1983, 1996 ADJUSTMENT.

IOWA COORDINATE SYSTEM, NORTH ZONE	SCALE FACTOR: <u>0.99996622</u>
COORDINATES (US FEET)	COORDINATES (METERS)
NORTHING (Y) <u>3571985.21</u>	NORTHING (Y) <u>1088743.268</u>
EASTING (X) <u>5119274.87</u>	EASTING (X) <u>1560358.102</u>

VERTICAL VALUES ORIGINATED ON VERTICAL CONTROL ESTABLISHED BY THE NATIONAL GEODETIC SURVEY AND/OR THE U.S. GEOLOGICAL SURVEY AND BASED ON THE NORTH AMERICAN VERTICAL DATUM OF 1988.

ELEVATION (US FEET) 1054.51 ELEVATION (METERS) 321.416



SKETCH
BY DSW
DENI 9701008