

# GPS SURVEY MARK DESCRIPTION

GIS MAPPING BY:  
THE SIDWELL COMPANY  
WEST CHICAGO, ILLINOIS

THE OFFICE OF THE  
COUNTY ENGINEER  
GRUNDY COUNTY, IOWA

DESIGNATION 871616 2 GPS No. 7048 COUNTY GRUNDY STATE IOWA  
 LOCATED IN SECTION 16 TWP 87N RGE 16W USGS QUAD MAP LINCOLN  
 TO REACH FROM THE INTERSECTION OF 250TH STREET AND Q AVENUE (T47); GO NORTH 200 FEET,  
MORE OR LESS, TO FIELD ENTRANCE ROAD TO WEST AND MARK.

MARK 3-1/4" ALUMINUM DISK SET IN 12" DIAMETER POURED-IN-PLACE CONCRETE MONUMENT

MARK EXISTING     VALUES AS PUBLISHED BY \_\_\_\_\_  
 MARK SET         VALUES ESTABLISHED BY DENI ASSOCIATES, INC. DATE JUNE 1997

HORIZONTAL VALUES ORIGINATED ON ORDER "B" IOWA HIGH ACCURACY REFERENCE NETWORK (HARN) CONTROL ESTABLISHED BY THE NATIONAL GEODETIC SURVEY AND BASED ON THE NORTH AMERICAN DATUM OF 1983, 1996 ADJUSTMENT.

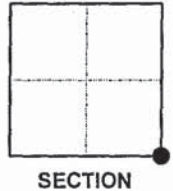
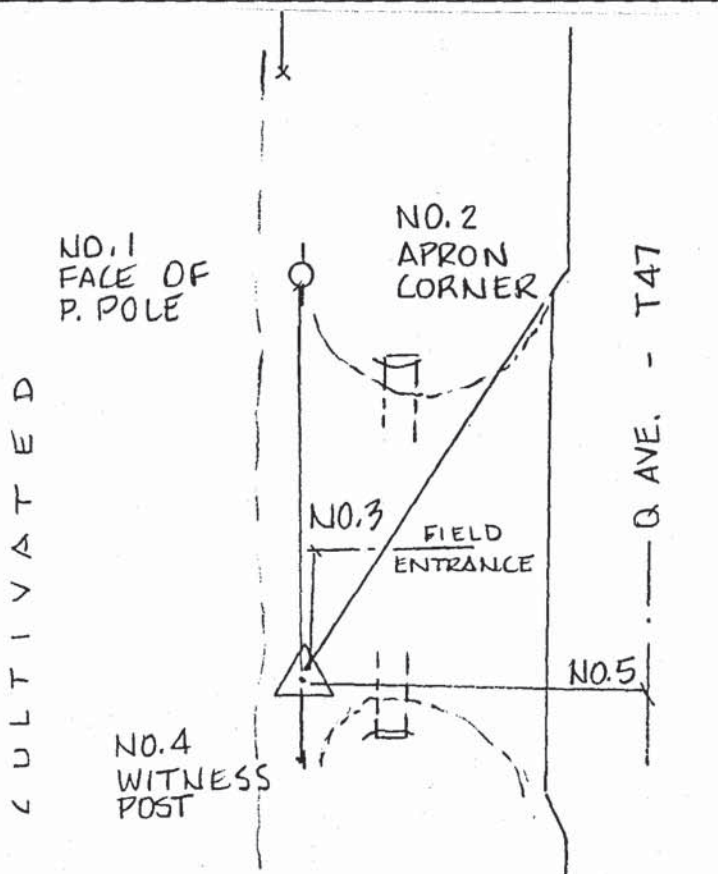
IOWA COORDINATE SYSTEM, NORTH ZONE	SCALE FACTOR: <u>0.99996156</u>
COORDINATES (US FEET)	COORDINATES (METERS)
NORTHING (Y) <u>3588194.69</u>	NORTHING (Y) <u>1093683.928</u>
EASTING (X) <u>5134834.57</u>	EASTING (X) <u>1565100.707</u>

VERTICAL VALUES ORIGINATED ON VERTICAL CONTROL ESTABLISHED BY THE NATIONAL GEODETIC SURVEY AND/OR THE U.S. GEOLOGICAL SURVEY AND BASED ON THE NORTH AMERICAN VERTICAL DATUM OF 1988.

ELEVATION (US FEET) 982.62 ELEVATION (METERS) 299.503

**TIES**

- No. 1 - 46.1'
- No. 2 - 56.7'
- No. 3 - 19'
- No. 4 - 12.0'
- No. 5 - 48.5'



SKETCH  
BY DSW  
DENI 9701008