

GPS SURVEY MARK DESCRIPTION

GIS MAPPING BY:
THE SIDWELL COMPANY
WEST CHICAGO, ILLINOIS

THE OFFICE OF THE
COUNTY ENGINEER
GRUNDY COUNTY, IOWA

DESIGNATION 881604 4 GPS No. 7051 COUNTY GRUNDY STATE IOWA

LOCATED IN SECTION 4 TWP 88N RGE 16W USGS QUAD MAP _____ DIKE _____

TO REACH FROM THE INTERSECTION OF 160TH STREET AND P AVENUE TO SOUTH; GO EAST 0.45 MILE TO
FIELD ENTRANCE DRIVE TO SOUTH AND MARK.

MARK 3-1/4" ALUMINUM DISK SET IN 12" DIAMETER POURED-IN-PLACE CONCRETE MONUMENT

MARK EXISTING VALUES AS PUBLISHED BY _____

MARK SET VALUES ESTABLISHED BY DENI ASSOCIATES, INC. DATE JUNE 1997

HORIZONTAL VALUES ORIGINATED ON ORDER "B" IOWA HIGH ACCURACY REFERENCE NETWORK (HARN) CONTROL ESTABLISHED BY THE NATIONAL GEODETIC SURVEY AND BASED ON THE NORTH AMERICAN DATUM OF 1983, 1996 ADJUSTMENT.

IOWA COORDINATE SYSTEM, NORTH ZONE SCALE FACTOR: 0.99995130

COORDINATES (US FEET) COORDINATES (METERS)

NORTHING (Y) 3635204.27 NORTHING (Y) 1108012.478

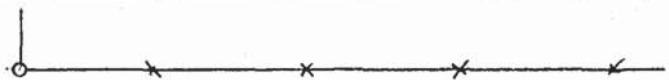
EASTING (X) 5131314.34 EASTING (X) 1564027.738

VERTICAL VALUES ORIGINATED ON VERTICAL CONTROL ESTABLISHED BY THE NATIONAL GEODETIC SURVEY AND/OR THE U.S. GEOLOGICAL SURVEY AND BASED ON THE NORTH AMERICAN VERTICAL DATUM OF 1988.

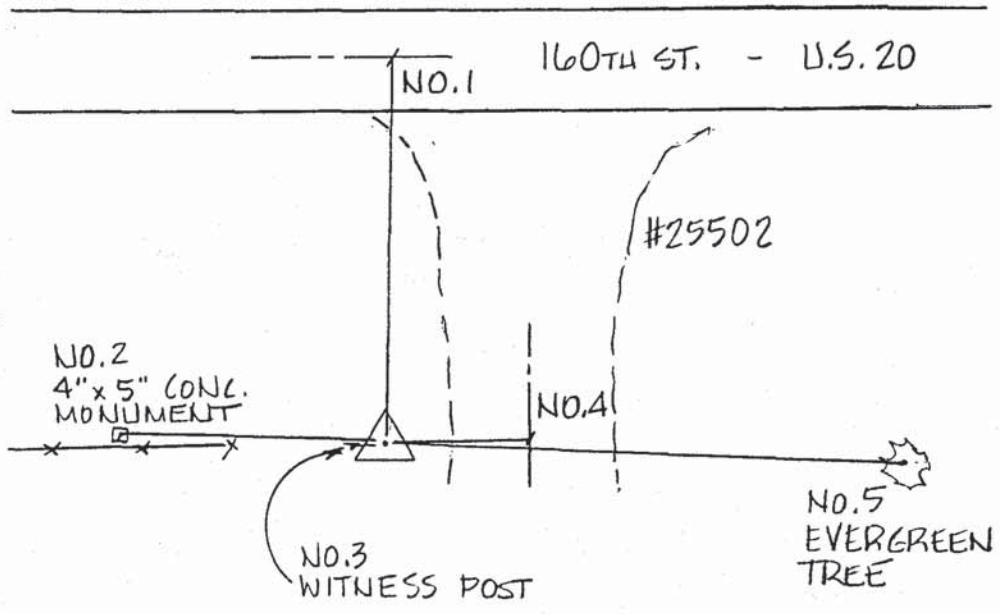
ELEVATION (US FEET) 1042.23 ELEVATION (METERS) 317.671

TIES

- No. 1 - 65.8'
- No. 2 - 41.0'
- No. 3 - 3.7'
- No. 4 - 20'
- No. 5 - 87.0'



SECTION



SKETCH

BY DSW

DENI 9701008