

# GPS SURVEY MARK DESCRIPTION

GIS MAPPING BY:  
THE SIDWELL COMPANY  
WEST CHICAGO, ILLINOIS

THE OFFICE OF THE  
COUNTY ENGINEER  
GRUNDY COUNTY, IOWA

DESIGNATION 881524 1 GPS No. 7072 COUNTY GRUNDY STATE IOWA  
 LOCATED IN SECTION 24 TWP 88N RGE 15W USGS QUAD MAP ZANETA  
 TO REACH FROM IN THE SOUTHWEST QUADRANT OF THE INTERSECTION OF 190TH STREET  
AND GRUNDY ROAD.

MARK 3-1/4" ALUMINUM DISK IN 12" DIAMETER POURED-IN-PLACE CONCRETE MONUMENT

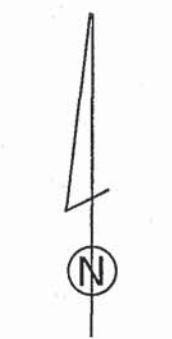
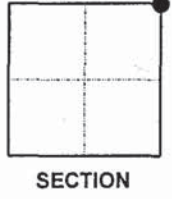
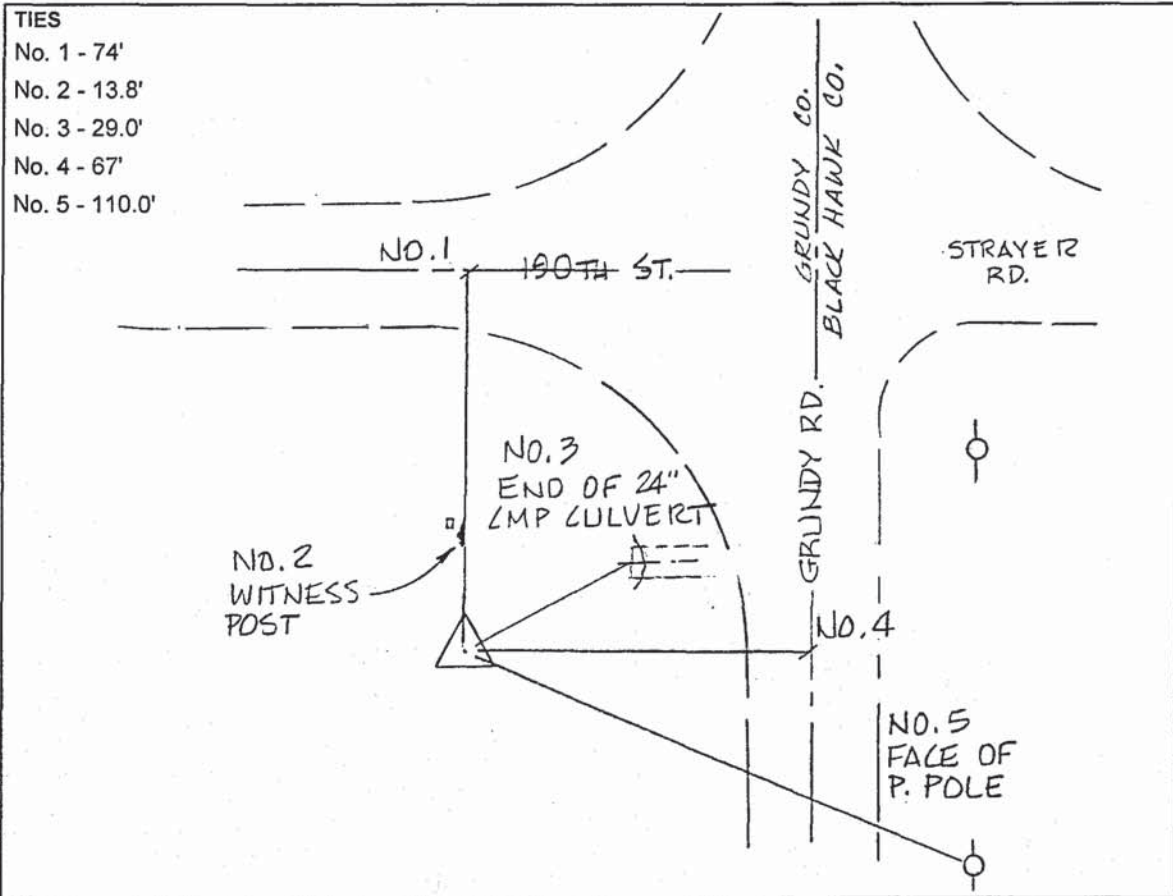
MARK EXISTING     VALUES AS PUBLISHED BY \_\_\_\_\_  
 MARK SET         VALUES ESTABLISHED BY DENI ASSOCIATES, INC. DATE JUNE 1997

HORIZONTAL VALUES ORIGINATED ON ORDER "B" IOWA HIGH ACCURACY REFERENCE NETWORK (HARN) CONTROL ESTABLISHED BY THE NATIONAL GEODETIC SURVEY AND BASED ON THE NORTH AMERICAN DATUM OF 1983, 1996 ADJUSTMENT.

IOWA COORDINATE SYSTEM, NORTH ZONE	SCALE FACTOR: <u>0.99995410</u>
COORDINATES (US FEET)	COORDINATES (METERS)
NORTHING (Y) <u>3620359.25</u>	NORTHING (Y) <u>1103487.706</u>
EASTING (X) <u>5181991.88</u>	EASTING (X) <u>1579474.282</u>

VERTICAL VALUES ORIGINATED ON VERTICAL CONTROL ESTABLISHED BY THE NATIONAL GEODETIC SURVEY AND/OR THE U.S. GEOLOGICAL SURVEY AND BASED ON THE NORTH AMERICAN VERTICAL DATUM OF 1988.

ELEVATION (US FEET) <u>949.65</u>	ELEVATION (METERS) <u>289.455</u>
-----------------------------------	-----------------------------------



SKETCH  
 BY DSW  
 DENI 9701008