

GPS SURVEY MARK DESCRIPTION

GIS MAPPING BY:
THE SIDWELL COMPANY
WEST CHICAGO, ILLINOIS

THE OFFICE OF THE
COUNTY ENGINEER
GRUNDY COUNTY, IOWA

DESIGNATION 871713 4 GPS No. 7078 COUNTY GRUNDY STATE IOWA

LOCATED IN SECTION 13 TWP 87N RGE 17W USGS QUAD MAP GRUNDY CENTER

TO REACH FROM THE INTERSECTION OF HIGHWAY 175 AND M AVENUE ON THE WEST SIDE

OF GRUNDY CENTER; GO SOUTH 0.5 MILE TO THE NORTHWEST CORNER OF TOWN AND COUNTRY

GOLF CLUB AND MARK.

MARK 3-1/4" ALUMINUM DISK SET IN 12" DIAMETER POURED-IN-PLACE CONCRETE MONUMENT

MARK EXISTING VALUES AS PUBLISHED BY _____

MARK SET VALUES ESTABLISHED BY DENI ASSOCIATES, INC. DATE JUNE 1997

HORIZONTAL VALUES ORIGINATED ON ORDER "B" IOWA HIGH ACCURACY REFERENCE NETWORK (HARN) CONTROL ESTABLISHED BY THE NATIONAL GEODETIC SURVEY AND BASED ON THE NORTH AMERICAN DATUM OF 1983, 1996 ADJUSTMENT.

IOWA COORDINATE SYSTEM, NORTH ZONE SCALE FACTOR: 0.99996024

COORDINATES (US FEET) COORDINATES (METERS)

NORTHING (Y) 3592982.00 NORTHING (Y) 1095143.103

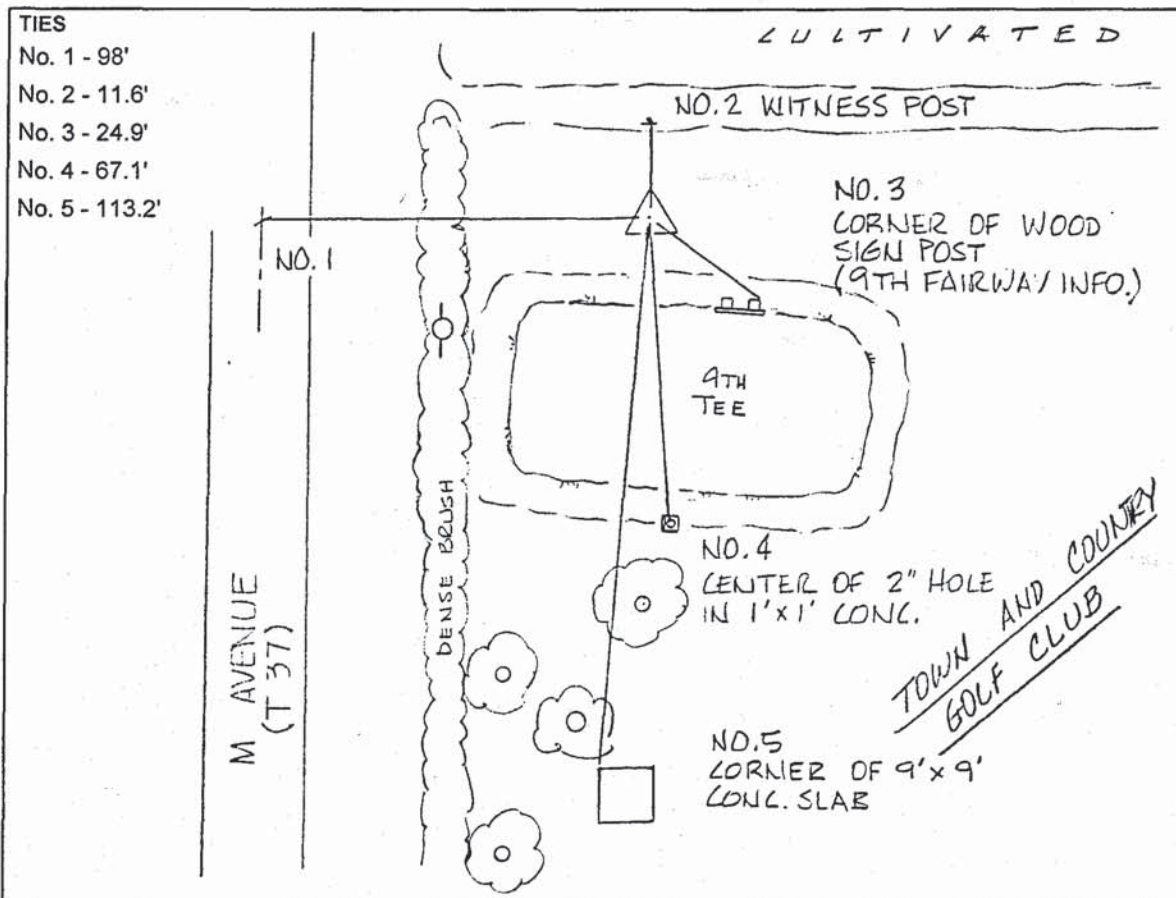
EASTING (X) 5113879.35 EASTING (X) 1558713.543

VERTICAL VALUES ORIGINATED ON VERTICAL CONTROL ESTABLISHED BY THE NATIONAL GEODETIC SURVEY AND/OR THE U.S. GEOLOGICAL SURVEY AND BASED ON THE NORTH AMERICAN VERTICAL DATUM OF 1988.

ELEVATION (US FEET) 1020.56 ELEVATION (METERS) 311.066

TIES

- No. 1 - 98'
- No. 2 - 11.6'
- No. 3 - 24.9'
- No. 4 - 67.1'
- No. 5 - 113.2'



SECTION



SKETCH

BY DSW

DENI 9701008