

Hancock County, Iowa

Horizontal Datum: **NAD 83(2011)** - Vertical Datum: **NAVD 1988**
Iowa State Plane North Zone (1401)
Iowa Regional Coordinate System, Zone 2. Mason City (LCC)
US Survey Feet
2015

Point Name: **2**

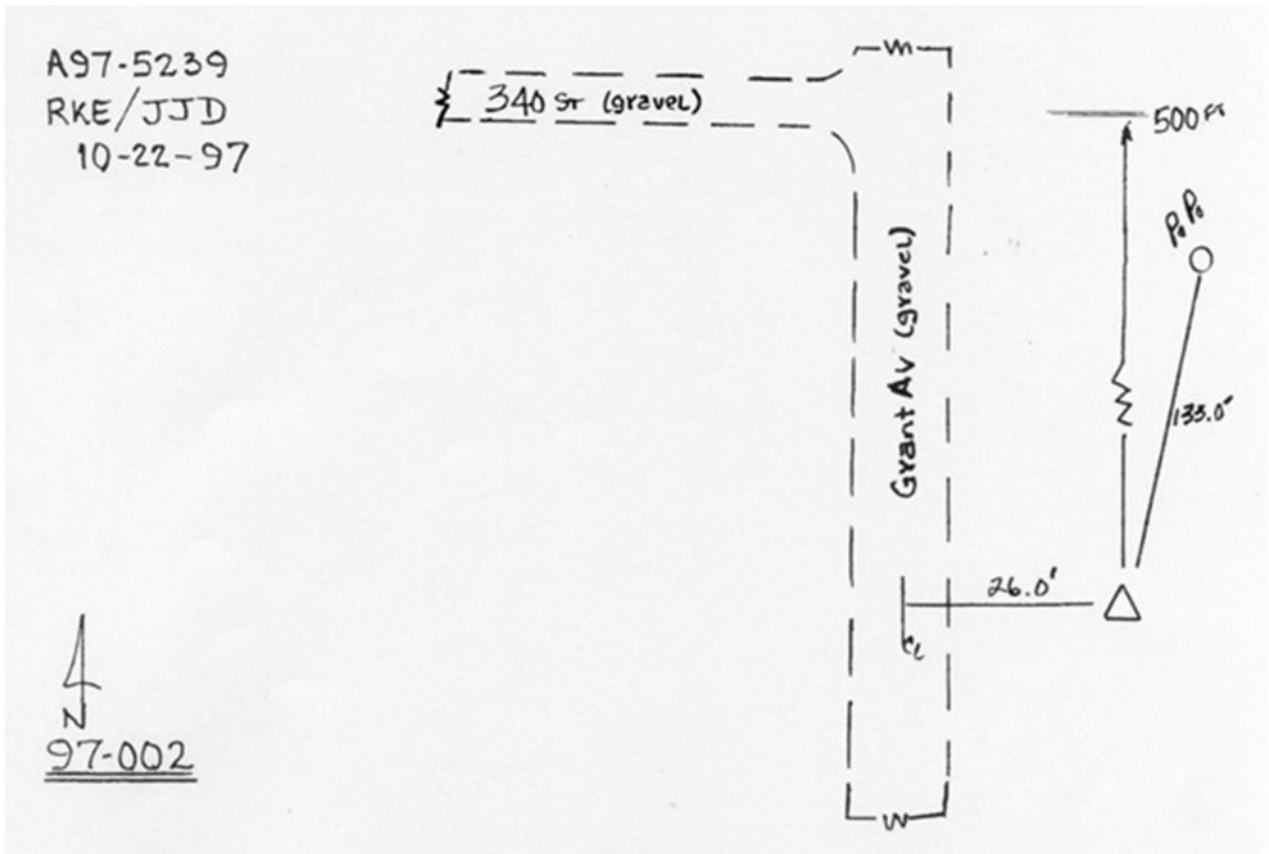
Designation: 97-002 HANCOCK CO GPS CONTROL PT (Set by ASI in 1997)

NAD 83(NA2011) Latitude: **N43°15'15.13542"** Longitude: **W93°51'07.45040"**
NAVD 88 Ortho Height: **1256.910sft** Ellip. Ht: **1160.646sft** Geoid12A

Iowa North Zone (1401) Northing: **3920323.606sft** Easting: **4827453.225sft**
Mapping Angle: **-0°14'19"** Combination Scale Factor: **0.999942372**

laRCS Zone 2 Northing: **9833839.841sft** Easting: **12206385.620sft**
Mapping Angle: **-00° 45' 14"** Combination Scale Factor: **0.999988588**

Monument Type: Existing Berntsen Top Security Rod Monument with a 2-1/2" dia. domed cap and a permanent magnet encased in a 5" dia. PVC pipe with a NGS style aluminum access cover.



This document was prepared by Dan Corbin, Inc. on April 30, 2015 for Hancock County, Iowa.