

Hancock County, Iowa

Horizontal Datum: **NAD 83(2011)** - Vertical Datum: **NAVD 1988**
Iowa State Plane North Zone (1401)
Iowa Regional Coordinate System, Zone 2. Mason City (LCC)
US Survey Feet
2015

Point Name: **4**

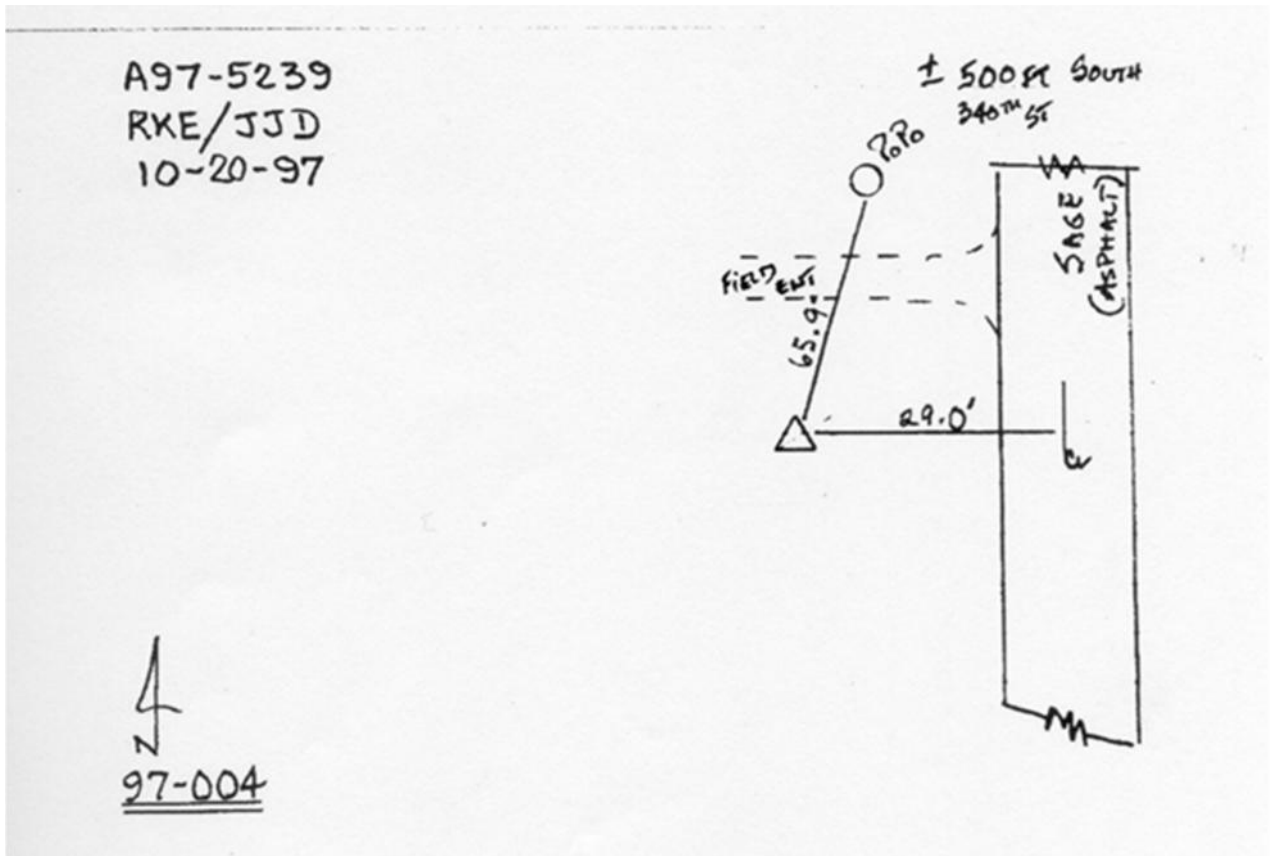
Designation: 97-004 HANCOCK CO GPS CONTROL PT (Set by ASI in 1997)

NAD 83(NA2011) Latitude: **N43°15'16.28448"** Longitude: **W93°37'01.41991"**
NAVD 88 Ortho Height: **1228.950sft** Ellip. Ht: **1132.028sft** Geoid12A

Iowa North Zone (1401) Northing: **3920266.226sft** Easting: **4890063.197sft**
Mapping Angle: **-0°04'46"** Combination Scale Factor: **0.999943794**

IaRCS Zone 2 Northing: **9833220.125sft** Easting: **12268995.456sft**
Mapping Angle: **-00° 35' 35"** Combination Scale Factor: **0.999989967**

Monument Type: Existing Berntsen Top Security Rod Monument with a 2-1/2" dia. domed cap and a permanent magnet encased in a 5" dia. PVC pipe with a NGS style aluminum access cover.



This document was prepared by Dan Corbin, Inc. on April 30, 2015 for Hancock County, Iowa.