

Hancock County, Iowa

Horizontal Datum: **NAD 83(2011)** - Vertical Datum: **NAVD 1988**
Iowa State Plane North Zone (1401)
Iowa Regional Coordinate System, Zone 2. Mason City (LCC)
US Survey Feet
2015

Point Name: **5**

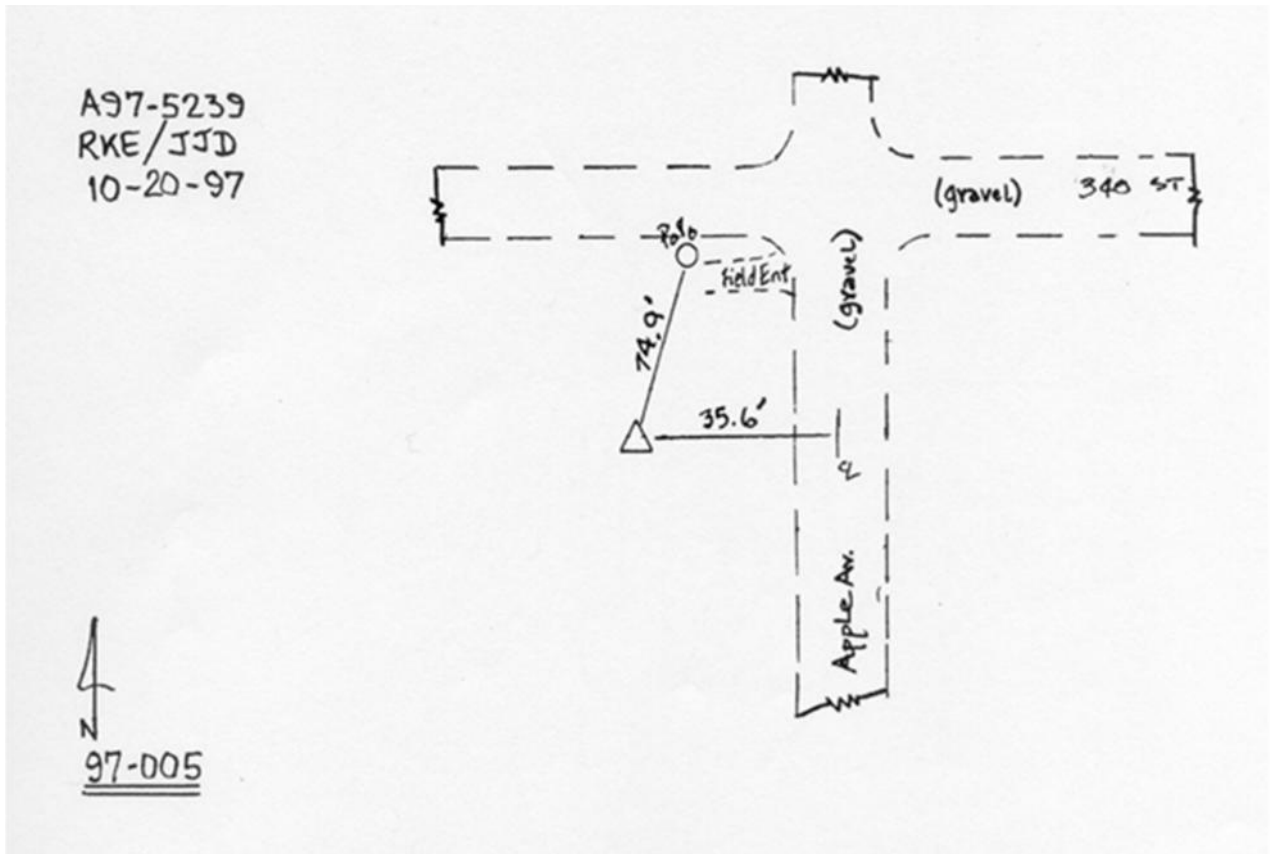
Designation: 97-005 HANCOCK CO GPS CONTROL PT (Set by ASI in 1997)

NAD 83(NA2011) Latitude: **N43°15'18.61324"** Longitude: **W93°29'51.95940"**
NAVD 88 Ortho Height: **1263.390sft** Ellip. Ht: **1167.199sft** Geoid12A

Iowa North Zone (1401) Northing: **3920480.423sft** Easting: **4921845.031sft**
Mapping Angle: **0°00'05"** Combination Scale Factor: **0.999942232**

laRCS Zone 2 Northing: **9833149.501sft** Easting: **12300779.406sft**
Mapping Angle: **-00° 30' 42"** Combination Scale Factor: **0.999988300**

Monument Type: Existing Berntsen Top Security Rod Monument with a 2-1/2" dia. domed cap and a permanent magnet encased in a 5" dia. PVC pipe with a NGS style aluminum access cover.



This document was prepared by Dan Corbin, Inc. on April 30, 2015 for Hancock County, Iowa.