

Hancock County, Iowa

Horizontal Datum: **NAD 83(2011)** - Vertical Datum: **NAVD 1988**
Iowa State Plane North Zone (1401)
Iowa Regional Coordinate System, Zone 2. Mason City (LCC)
US Survey Feet
2015

Point Name: **6**

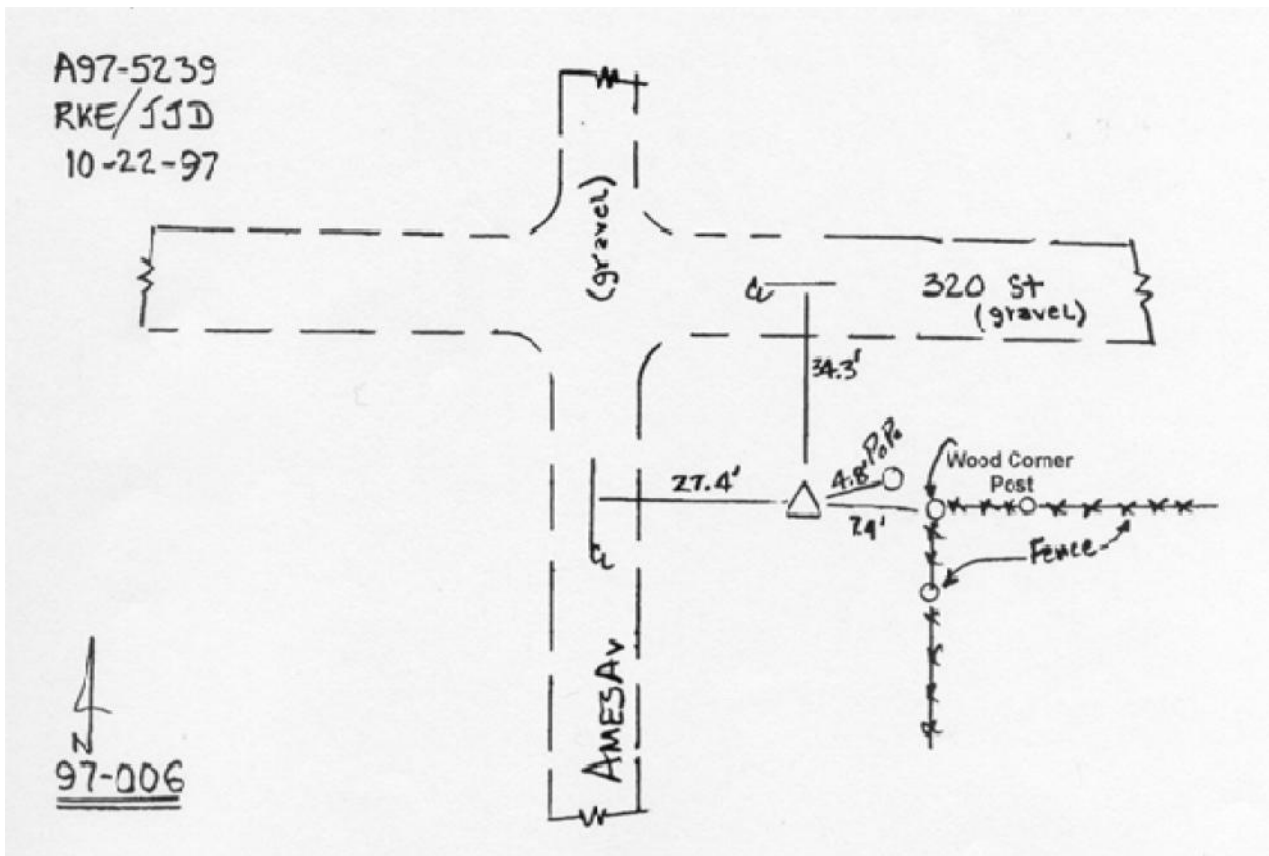
Designation: 97-006 HANCOCK CO GPS CONTROL PT (Set by ASI in 1997)

NAD 83(NA2011) Latitude: **N43°13'36.57337"** Longitude: **W93°58'12.41743"**
NAVD 88 Ortho Height: **1168.000sft** Ellip. Ht: **1072.401sft** Geoid12A

Iowa North Zone (1401) Northing: **3910497.546sft** Easting: **4795948.629sft**
Mapping Angle: **-0°19'07"** Combination Scale Factor: **0.999941799**

IaRCS Zone 2 Northing: **9824297.282sft** Easting: **12174792.326sft**
Mapping Angle: **-00° 50' 05"** Combination Scale Factor: **0.999992199**

Monument Type: Existing Berntsen Top Security Rod Monument with a 2-1/2" dia. domed cap and a permanent magnet encased in a 5" dia. PVC pipe with a NGS style aluminum access cover.



This document was prepared by Dan Corbin, Inc. on April 30, 2015 for Hancock County, Iowa.