

Hancock County, Iowa

Horizontal Datum: **NAD 83(2011)** - Vertical Datum: **NAVD 1988**
Iowa State Plane North Zone (1401)
Iowa Regional Coordinate System, Zone 2. Mason City (LCC)
US Survey Feet
2015

Point Name: **10**

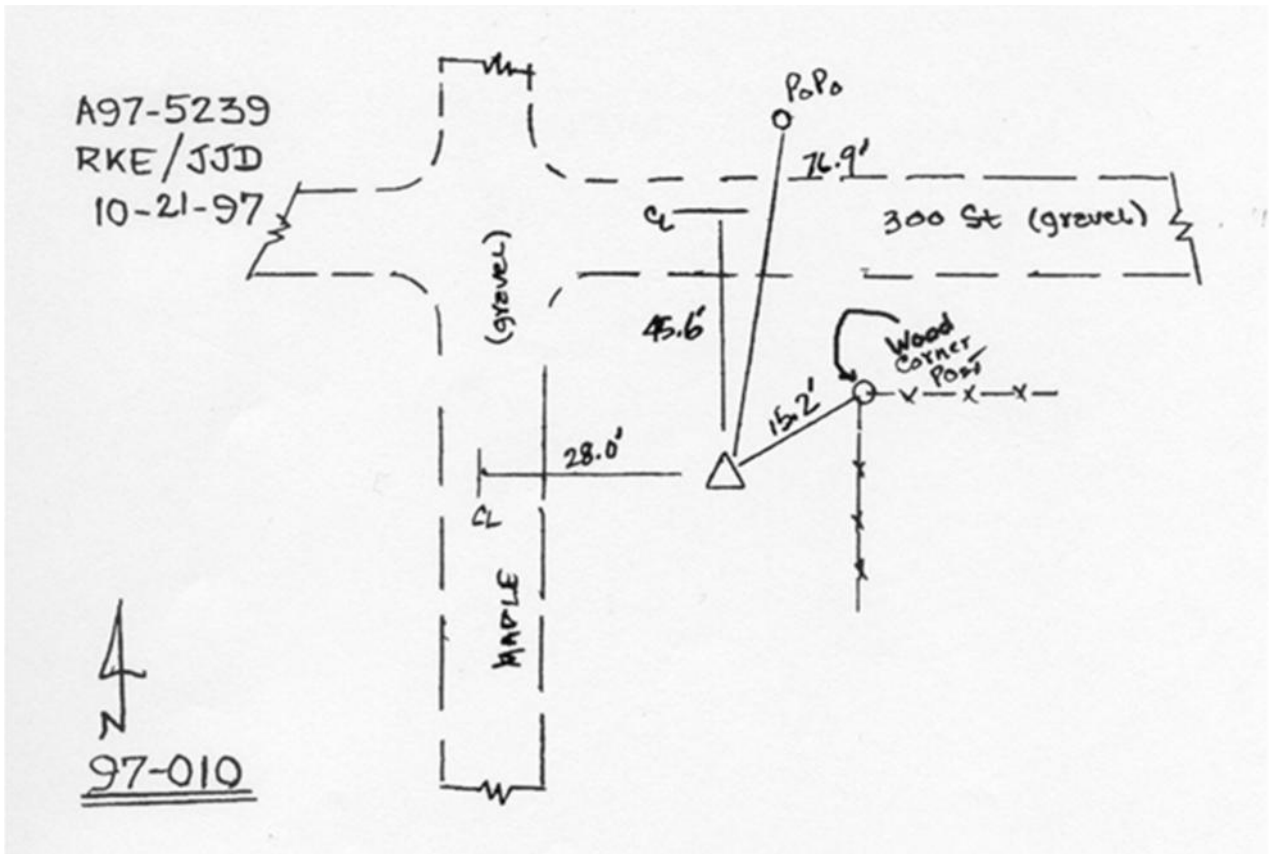
Designation: 97-010 HANCOCK CO GPS CONTROL PT (Set by ASI in 1997)

NAD 83(NA2011) Latitude: **N43°11'53.74826"** Longitude: **W93°44'01.11856"**
NAVD 88 Ortho Height: **1217.920sft** Ellip. Ht: **1121.052sft** **Geoid12A**

Iowa North Zone (1401) Northing: **3899824.574sft** Easting: **4858947.160sft**
Mapping Angle: **-0°09'30"** Combination Scale Factor: **0.999934733**

laRCS Zone 2 Northing: **9813057.529sft** Easting: **12237695.632sft**
Mapping Angle: **-00° 40' 23"** Combination Scale Factor: **0.999989471**

Monument Type: Existing Berntsen Top Security Rod Monument with a 2-1/2" dia. domed cap and a permanent magnet encased in a 5" dia. PVC pipe with a NGS style aluminum access cover.



This document was prepared by Dan Corbin, Inc. on April 30, 2015 for Hancock County, Iowa.