

**Hancock County, Iowa**

Horizontal Datum: **NAD 83(2011)** - Vertical Datum: **NAVD 1988**  
Iowa State Plane North Zone (1401)  
Iowa Regional Coordinate System, Zone 2. Mason City (LCC)  
US Survey Feet  
**2015**

Point Name: **11**

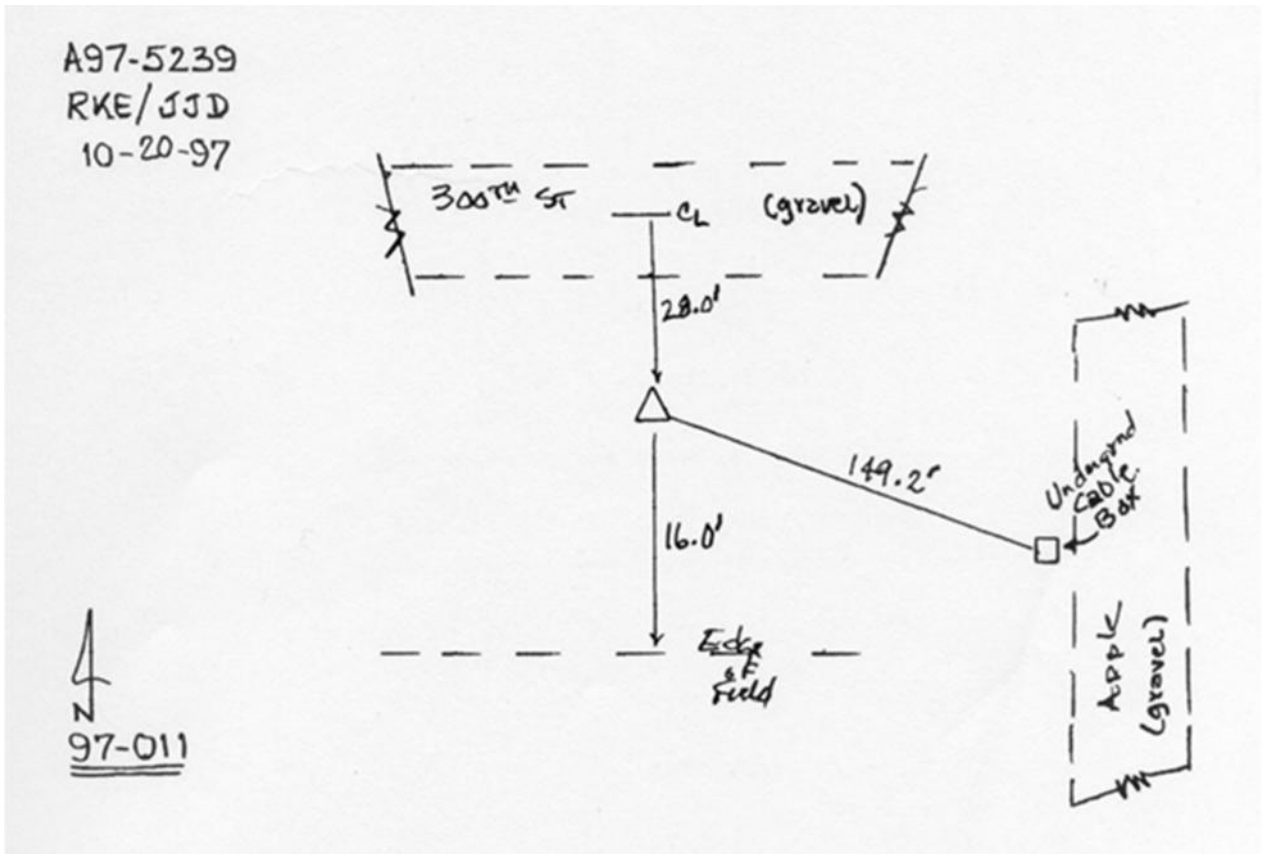
**Designation:** 97-011 HANCOCK CO GPS CONTROL PT (Set by ASI in 1997)

NAD 83(NA2011) Latitude: **N43°11'54.76311"** Longitude: **W93°29'53.78407"**  
NAVD 88 Ortho Height: **1222.730sft** Ellip. Ht: **1127.127sft** Geoid12A

**Iowa North Zone (1401)** Northing: **3899841.234sft** Easting: **4921710.421sft**  
Mapping Angle: **0°00'04"** Combination Scale Factor: **0.999934489**

**laRCS Zone 2** Northing: **9812511.300sft** Easting: **12300459.965sft**  
Mapping Angle: **-00° 30' 43"** Combination Scale Factor: **0.999989183**

**Monument Type:** Existing Berntsen Top Security Rod Monument with a 2-1/2" dia. domed cap and a permanent magnet encased in a 5" dia. PVC pipe with a NGS style aluminum access cover.



*This document was prepared by Dan Corbin, Inc. on April 30, 2015 for Hancock County, Iowa.*